

NanoAb™

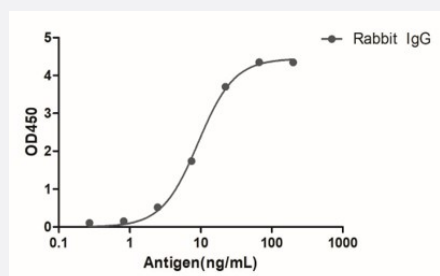
RecomAb™

# Rabbit IgG Fc Gamma fragment VHH recombinant monoclonal antibody (Biotin)

Catalog # RAB07206

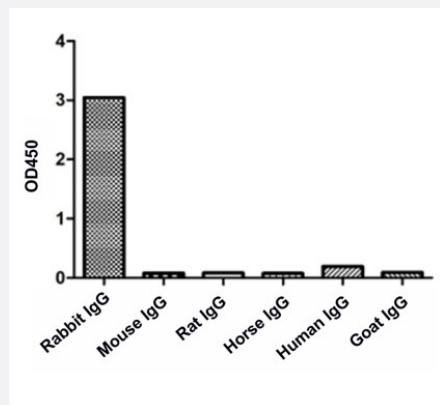
Size 100 ug

## Applications



### Enzyme-linked Immunoabsorbent Assay

A titer ELISA of Rabbit IgG. The plate was coated with different amounts of Rabbit IgG. Rabbit VHH IgG Fc Gamma recombinant monoclonal antibody (Biotin) (Cat # RAB07206) was used as the primary antibody at 1:10000 and streptavidin (HRP) (Cat # RAB07268) as the secondary antibody.



### Enzyme-linked Immunoabsorbent Assay

ELISA of specificity for different species of IgG. Rabbit VHH IgG Fc Gamma recombinant monoclonal antibody (Biotin) (Cat # RAB07206) was used as the primary antibody and streptavidin (HRP) (Cat # RAB07268) as the secondary antibody.

## Specification

<b>Product Description</b>	Alpaca VHH recombinant monoclonal antibody raised against rabbit IgG. The antibody is conjugated with biotin.
<b>Antibody Species</b>	Alpaca
<b>Reactivity</b>	Rabbit
<b>Specificity</b>	Rabbit IgG Fc region

<b>Form</b>	Liquid
<b>Conjugation</b>	Biotin
<b>Purification</b>	Protein A
<b>Isotype</b>	Alpaca IgG2b/2c
<b>Recommend Usage</b>	ELISA (1:10000-1:50000) Immunoprecipitation (1-2ug) Surface Plasmon Resonance Western Blot (1:10000-1:50000) The optimal working dilution should be determined by the end user.
<b>Storage Buffer</b>	In 10 mM PBS, pH 7.5 (0.05% sucrose, 0.1% trehalose, 0.01% proclin 300)
<b>Storage Instruction</b>	Store at -20°C. Aliquot to avoid repeated freezing and thawing.

## Applications

- Western Blot

- Immunoprecipitation

- Enzyme-linked Immunoabsorbent Assay

A titer ELISA of Rabbit IgG. The plate was coated with different amounts of Rabbit IgG. Rabbit VHH IgG Fc Gamma recombinant monoclonal antibody (Biotin) (Cat # RAB07206) was used as the primary antibody at 1:10000 and streptavidin (HRP) (Cat # RAB07268) as the secondary antibody.

- Enzyme-linked Immunoabsorbent Assay

ELISA of specificity for different species of IgG. Rabbit VHH IgG Fc Gamma recombinant monoclonal antibody (Biotin) (Cat # RAB07206) was used as the primary antibody and streptavidin (HRP) (Cat # RAB07268) as the secondary antibody.

- Surface Plasmon Resonance