

NanoAb™

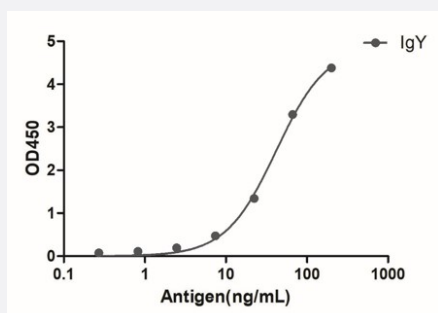
RecomAb™

# Chicken IgY VHH recombinant monoclonal antibody

Catalog # RAB07201

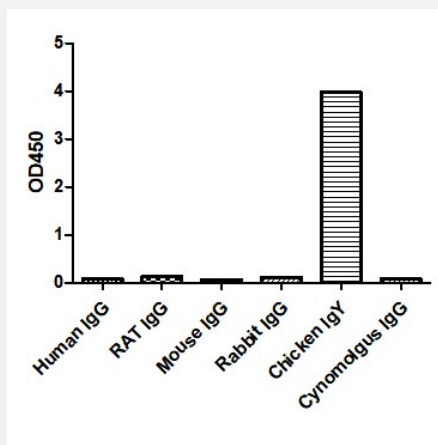
Size 100 ug

## Applications



### Enzyme-linked Immunoabsorbent Assay

A titer ELISA of chicken IgY. The plate was coated with different amounts of chicken IgY. Chicken VHH IgY Goat IgG Fc fusion recombinant monoclonal antibody (Cat # RAB07201) was used as the primary antibody at 1:10000 and Goat VHH IgG Fc Gamma Rabbit IgG Fc fusion recombinant monoclonal antibody (HRP) (Cat # RAB07260) as the secondary antibody.



### Enzyme-linked Immunoabsorbent Assay

ELISA of specificity for different species of IgG. The plate was coated with 2ug/ml of different IgG. Chicken VHH IgY Goat IgG Fc fusion recombinant monoclonal antibody (Cat # RAB07201) was used as the primary antibody at 1:1000 and Goat VHH IgG Fc Gamma Rabbit IgG Fc fusion recombinant monoclonal antibody (HRP) (Cat # RAB07260) at the secondary antibody.

## Specification

Product Description	Alpaca VHH recombinant monoclonal antibody raised against chicken IgY.
Antibody Species	Alpaca
Immunogen	Recombinant Fc region of chicken IgY
Reactivity	Chicken
Specificity	Chicken IgY Fc region

<b>Form</b>	Liquid
<b>Conjugation</b>	Unconjugated
<b>Purification</b>	Protein A
<b>Isotype</b>	Goat IgG Fc
<b>Recommend Usage</b>	ELISA (1:10000-1:50000) Western Blot (1:10000-1:50000) The optimal working dilution should be determined by the end user.
<b>Storage Buffer</b>	In 10 mM PBS, pH 7.5 (0.05% sucrose, 0.1% trehalose, 0.01% proclin 300, 50% glycerol)
<b>Storage Instruction</b>	Store at -20°C. Aliquot to avoid repeated freezing and thawing.

## Applications

- Western Blot

- Enzyme-linked Immunoabsorbent Assay

A titer ELISA of chicken IgY. The plate was coated with different amounts of chicken IgY. Chicken VHH IgY Goat IgG Fc fusion recombinant monoclonal antibody (Cat # RAB07201) was used as the primary antibody at 1:10000 and Goat VHH IgG Fc Gamma Rabbit IgG Fc fusion recombinant monoclonal antibody (HRP) (Cat # RAB07260) as the secondary antibody.

- Enzyme-linked Immunoabsorbent Assay

ELISA of specificity for different species of IgG. The plate was coated with 2ug/ml of different IgG. Chicken VHH IgY Goat IgG Fc fusion recombinant monoclonal antibody (Cat # RAB07201) was used as the primary antibody at 1:1000 and Goat VHH IgG Fc Gamma Rabbit IgG Fc fusion recombinant monoclonal antibody (HRP) (Cat # RAB07260) at the secondary antibody.