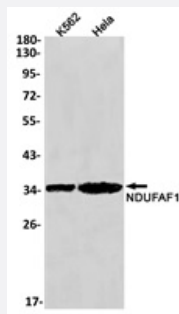


RecomAb™

NDUFAF1 recombinant monoclonal antibody, clone R04-2J6

Catalog # RAB04942 Size 100 uL

Applications



Western Blot (Cell lysate)

Western blot analysis of K562, HeLa lysates with NDUFAF1 recombinant monoclonal antibody, clone R04-2J6 (Cat # RAB04942).

Specification

Product Description	Rabbit recombinant monoclonal antibody raised against human NDUFAF1.
Antibody Species	Rabbit
Immunogen	Original antibody is raised against a synthetic peptide corresponding to human NDUFAF1.
Theoretical MW (kDa)	Calculated MW: 38 kD
Reactivity	Human, Mouse, Rat
Form	Liquid
Purification	Affinity purification
Isotype	IgG

Recommend Usage	Immunocytochemistry (1:50-1:200) Immunofluorescence (1:50-1:200) Immunohistochemistry (Formalin/PFA-fixed paraffin-embedded sections) (1:50-1:100) Immunohistochemistry (Frozen sections) (1:50-1:100) Immunoprecipitation(1:20) Western Blot (1:500-1:1000) The optimal working dilution should be determined by the end user.
Storage Buffer	In 50 mM Tris-Glycine, pH 7.4 (0.15M NaCl, 40% Glycerol, 0.01% Sodium azide and 0.05% BSA)
Storage Instruction	Store at 4°C. For long term storage store at -20°C. Aliquot to avoid repeated freezing and thawing.
Note	This product contains sodium azide: a POISONOUS AND HAZARDOUS SUBSTANCE which should be handled by trained staff only.

Applications

- Western Blot (Cell lysate)

Western blot analysis of K562, Hela lysates with NDUFAF1 recombinant monoclonal antibody, clone R04-2J6 (Cat # RAB04942).

- Immunohistochemistry (Formalin/PFA-fixed paraffin-embedded sections)

- Immunohistochemistry (Frozen sections)

- Immunocytochemistry

- Immunofluorescence

- Immunoprecipitation

Gene Info — NDUFAF1

Entrez GeneID	51103
Protein Accession#	Q9Y375
Gene Name	NDUFAF1
Gene Alias	CGI-65, CGI65, CIA30
Gene Description	NADH dehydrogenase (ubiquinone) 1 alpha subcomplex, assembly factor 1

Omim ID	606934
---------	------------------------

Gene Ontology	Hyperlink
---------------	---------------------------

Gene Summary	The NDUFAF1 gene encodes the human homolog of a Neurospora crassa Cia30 protein involved in the assembly of complex I.[supplied by OMIM]
--------------	--

Other Designations	-
--------------------	---