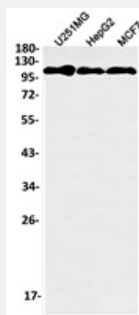


RecomAb™

# NCL (phospho T84) recombinant monoclonal antibody, clone R06-4D0

Catalog # RAB04918      Size 100 uL

## Applications



### Western Blot (Cell lysate)

Western blot analysis of U251MG, HepG2, Hela lysates with NCL (phospho T84) recombinant monoclonal antibody, clone R06-4D0 (Cat # RAB04918).

## Specification

<b>Product Description</b>	Rabbit recombinant monoclonal antibody raised against human NCL.
<b>Antibody Species</b>	Rabbit
<b>Immunogen</b>	Original antibody is raised against a synthetic phosphopeptide corresponding to residues surrounding Thr84 of human NCL.
<b>Theoretical MW (kDa)</b>	Calculated MW: 77 kD
<b>Reactivity</b>	Human
<b>Form</b>	Liquid
<b>Purification</b>	Affinity purification
<b>Isotype</b>	IgG
<b>Recommend Usage</b>	Western Blot (1:500-1:1000) The optimal working dilution should be determined by the end user.

Storage Buffer	In 50 mM Tris-Glycine, pH 7.4 (0.15M NaCl, 40% Glycerol, 0.01% Sodium azide and 0.05% BSA)
Storage Instruction	Store at 4°C. For long term storage store at -20°C. Aliquot to avoid repeated freezing and thawing.
Note	This product contains sodium azide: a POISONOUS AND HAZARDOUS SUBSTANCE which should be handled by trained staff only.

## Applications

- Western Blot (Cell lysate)

Western blot analysis of U251MG, HepG2, Hela lysates with NCL (phospho T84) recombinant monoclonal antibody, clone R06-4D0 (Cat # RAB04918).

## Gene Info — NCL

Entrez GeneID	<a href="#">4691</a>
Protein Accession#	<a href="#">P19338</a>
Gene Name	NCL
Gene Alias	C23, FLJ45706
Gene Description	nucleolin
Omim ID	<a href="#">164035</a>
Gene Ontology	<a href="#">Hyperlink</a>
Gene Summary	Nucleolin (NCL), a eukaryotic nucleolar phosphoprotein, is involved in the synthesis and maturation of ribosomes. It is located mainly in dense fibrillar regions of the nucleolus. Human NCL gene consists of 14 exons with 13 introns and spans approximately 11kb. The intron 11 of the NCL gene encodes a small nucleolar RNA, termed U20. [provided by RefSeq]
Other Designations	-

## Pathway

- [Pathogenic Escherichia coli infection - EHEC](#)