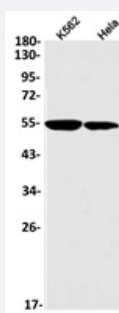


RecomAb™

# KATNA1 recombinant monoclonal antibody, clone R05-3B9

Catalog # RAB04904      Size 100 uL

## Applications



### Western Blot (Cell lysate)

Western blot analysis of K562, HeLa lysates with KATNA1 recombinant monoclonal antibody, clone R05-3B9 (Cat # RAB04904).

## Specification

<b>Product Description</b>	Rabbit recombinant monoclonal antibody raised against human KATNA1.
<b>Antibody Species</b>	Rabbit
<b>Immunogen</b>	Original antibody is raised against a synthetic peptide corresponding to human KATNA1.
<b>Theoretical MW (kDa)</b>	56
<b>Reactivity</b>	Human
<b>Form</b>	Liquid
<b>Purification</b>	Affinity purification
<b>Isotype</b>	IgG
<b>Recommend Usage</b>	Western Blot (1:500-1:1000) The optimal working dilution should be determined by the end user.
<b>Storage Buffer</b>	In 50 mM Tris-Glycine, pH 7.4 (0.15M NaCl, 40% Glycerol, 0.01% Sodium azide and 0.05% BSA)

**Storage Instruction**

Store at 4°C. For long term storage store at -20°C.  
Aliquot to avoid repeated freezing and thawing.

**Note**

This product contains sodium azide: a POISONOUS AND HAZARDOUS SUBSTANCE which should be handled by trained staff only.

## Applications

- Western Blot (Cell lysate)

Western blot analysis of K562, Hela lysates with KATNA1 recombinant monoclonal antibody, clone R05-3B9 (Cat # RAB04904).

## Gene Info — KATNA1

**Entrez GeneID**[11104](#)**Protein Accession#**[O75449](#)**Gene Name**

KATNA1

**Gene Alias**

-

**Gene Description**

katanin p60 (ATPase-containing) subunit A 1

**Omim ID**[606696](#)**Gene Ontology**[Hyperlink](#)**Gene Summary**

Microtubules, polymers of alpha and beta tubulin subunits, form the mitotic spindle of a dividing cell and help to organize membranous organelles during interphase. Katanin is a heterodimer that consists of a 60 kDa ATPase (p60 subunit A 1) and an 80 kDa accessory protein (p80 subunit B 1). The p60 subunit acts to sever and disassemble microtubules, while the p80 subunit targets the enzyme to the centrosome. This gene encodes the p80 subunit. This protein is a member of the AAA family of ATPases. [provided by RefSeq]

**Other Designations**

OTTHUMP00000017392|katanin p60 subunit A 1