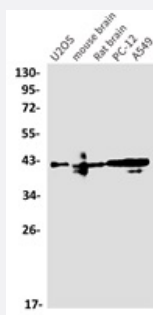


RecomAb™

PARVA (phospho S8) recombinant monoclonal antibody, clone R05-7A7

Catalog # RAB04899 Size 100 uL

Applications



Western Blot

Western blot analysis of U2OS, mouse brain, rat brain, PC-12, A549 lysates with PARVA (phospho S8) recombinant monoclonal antibody, clone R05-7A7 (Cat # RAB04899).

Specification

| | |
|-----------------------------|--|
| Product Description | Rabbit recombinant monoclonal antibody raised against human PARVA. |
| Antibody Species | Rabbit |
| Immunogen | Original antibody is raised againstA synthetic phosphopeptide corresponding to residues surrounding Ser8 of human PARVA. |
| Theoretical MW (kDa) | 42 |
| Reactivity | Human, Mouse, Rat |
| Form | Liquid |
| Purification | Affinity purification |
| Isotype | IgG |

| | |
|----------------------------|--|
| Recommend Usage | Immunocytochemistry (1:50-1:200) Immunofluorescence (1:50-1:200) Western Blot (1:500-1:1000) The optimal working dilution should be determined by the end user. |
| Storage Buffer | In 50 mM Tris-Glycine, pH 7.4 (0.15M NaCl, 40% Glycerol, 0.01% Sodium azide and 0.05% BSA) |
| Storage Instruction | Store at 4°C. For long term storage store at -20°C. Aliquot to avoid repeated freezing and thawing. |
| Note | This product contains sodium azide: a POISONOUS AND HAZARDOUS SUBSTANCE which should be handled by trained staff only. |

Applications

- Western Blot

Western blot analysis of U2OS, mouse brain, rat brain, PC-12, A549 lysates with PARVA (phospho S8) recombinant monoclonal antibody, clone R05-7A7 (Cat # RAB04899).

- Immunocytochemistry

- Immunofluorescence

Gene Info — PARVA

| | |
|---------------------------|---|
| Entrez GeneID | 55742 |
| Protein Accession# | Q9NVD7 |
| Gene Name | PARVA |
| Gene Alias | FLJ10793, FLJ12254, MXRA2 |
| Gene Description | parvin, alpha |
| Omim ID | 608120 |
| Gene Ontology | Hyperlink |
| Gene Summary | Members of the parvin family, including PARVA, are actin-binding proteins associated with focal contacts.[supplied by OMIM] |
| Other Designations | actopaxin alpha-parvin matrix-remodelling associated 2 |

Pathway

- [Focal adhesion](#)