

RecomAb™

ANP32B recombinant monoclonal antibody, clone R03-6H2

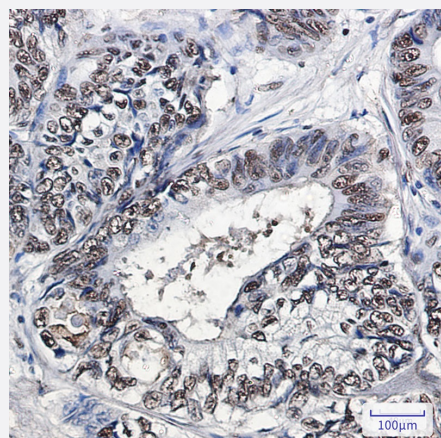
Catalog # RAB04882 Size 100 uL

Applications



Western Blot (Cell lysate)

Western blot analysis of K562, C6 lysates with ANP32B recombinant monoclonal antibody, clone R03-6H2 (Cat # RAB04882).



Immunohistochemistry (Formalin/PFA-fixed paraffin-embedded sections)

Immunohistochemistry analysis of paraffin-embedded human colon cancer tissue using ANP32B recombinant monoclonal antibody, clone R03-6H2 (Cat # RAB04882). High-pressure and temperature Sodium Citrate pH 6.0 was used for antigen retrieval.

Specification

Product Description	Rabbit recombinant monoclonal antibody raised against human ANP32B.
Antibody Species	Rabbit
Immunogen	Original antibody is raised against a synthetic peptide corresponding to human ANP32B.
Theoretical MW (kDa)	29
Reactivity	Human, Rat

Form	Liquid
Purification	Affinity purification
Isotype	IgG
Recommend Usage	Immunocytochemistry (1:50-1:200) Immunofluorescence (1:50-1:200) Immunohistochemistry (Formalin/PFA-fixed paraffin-embedded sections) (1:50-1:100) Immunohistochemistry (Frozen sections) (1:50-1:100) Western Blot (1:500-1:1000) The optimal working dilution should be determined by the end user.
Storage Buffer	In 50 mM Tris-Glycine, pH 7.4 (0.15M NaCl, 40% Glycerol, 0.01% Sodium azide and 0.05% BSA)
Storage Instruction	Store at 4°C. For long term storage store at -20°C. Aliquot to avoid repeated freezing and thawing.
Note	This product contains sodium azide: a POISONOUS AND HAZARDOUS SUBSTANCE which should be handled by trained staff only.

Applications

- Western Blot (Cell lysate)

Western blot analysis of K562, C6 lysates with ANP32B recombinant monoclonal antibody, clone R03-6H2 (Cat # RAB04882).

- Immunohistochemistry (Formalin/PFA-fixed paraffin-embedded sections)

Immunohistochemistry analysis of paraffin-embedded human colon cancer tissue using ANP32B recombinant monoclonal antibody, clone R03-6H2 (Cat # RAB04882). High-pressure and temperature Sodium Citrate pH 6.0 was used for antigen retrieval.

- Immunohistochemistry (Frozen sections)

- Immunocytochemistry

- Immunofluorescence

Gene Info — ANP32B

Entrez GeneID	10541
Protein Accession#	Q92688
Gene Name	ANP32B

Gene Alias	APRIL, PHAPI2, SSP29
Gene Description	acidic (leucine-rich) nuclear phosphoprotein 32 family, member B
Gene Ontology	Hyperlink
Gene Summary	O
Other Designations	OTTHUMP00000021759 OTTHUMP00000063770 acidic protein rich in leucines