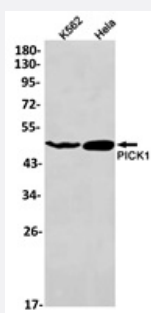


RecomAb™

# PICK1 recombinant monoclonal antibody, clone R01-4D1

Catalog # RAB04880      Size 100 uL

## Applications



### Western Blot (Cell lysate)

Western blot analysis of K562, HeLa lysates with PICK1 recombinant monoclonal antibody, clone R01-4D1 (Cat # RAB04880).

## Specification

Product Description	Rabbit recombinant monoclonal antibody raised against human PICK1.
Antibody Species	Rabbit
Immunogen	Original antibody is raised against a synthetic peptide corresponding to human PICK1.
Theoretical MW (kDa)	Calculated MW: 47 kD
Reactivity	Human
Form	Liquid
Purification	Affinity purification
Isotype	IgG
Recommend Usage	Immunoprecipitation(1:20) Western Blot (1:500-1:1000) The optimal working dilution should be determined by the end user.
Storage Buffer	In 50 mM Tris-Glycine, pH 7.4 (0.15M NaCl, 40% Glycerol, 0.01% Sodium azide and 0.05% BSA)

**Storage Instruction**

Store at 4°C. For long term storage store at -20°C.  
Aliquot to avoid repeated freezing and thawing.

**Note**

This product contains sodium azide: a POISONOUS AND HAZARDOUS SUBSTANCE which should be handled by trained staff only.

## Applications

- Western Blot (Cell lysate)

Western blot analysis of K562, Hela lysates with PICK1 recombinant monoclonal antibody, clone R01-4D1 (Cat # RAB04880).

- Immunoprecipitation

## Gene Info — PICK1

**Entrez GeneID**[9463](#)**Protein Accession#**[Q9NRD5](#)**Gene Name**

PICK1

**Gene Alias**

MGC15204, PICK, PRKCABP

**Gene Description**

protein interacting with PRKCA 1

**Omim ID**[605926](#)**Gene Ontology**[Hyperlink](#)**Gene Summary**

The protein encoded by this gene contains a PDZ domain, through which it interacts with protein kinase C, alpha (PRKCA). This protein may function as an adaptor that binds to and organizes the subcellular localization of a variety of membrane proteins. It has been shown to interact with multiple glutamate receptor subtypes, monoamine plasma membrane transporters, as well as non-voltage gated sodium channels, and may target PRKCA to these membrane proteins and thus regulate their distribution and function. This protein has also been found to act as an anchoring protein that specifically targets PRKCA to mitochondria in a ligand-specific manner. Three transcript variants encoding the same protein have been found for this gene. [provided by RefSeq]

**Other Designations**

OTTHUMP00000028509|PRKCA-binding protein|protein interacting with C kinase 1|protein kinase C, alpha binding protein

## Disease

- [Amphetamine-Related Disorders](#)
- [Genetic Predisposition to Disease](#)
- [Mental Disorders](#)
- [Psychoses](#)
- [Schizophrenia](#)