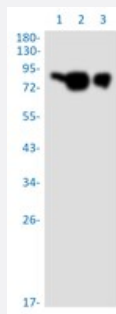


RecomAb™

# PVR recombinant monoclonal antibody, clone R01-8A1

Catalog # RAB04468      Size 100 uL

## Applications



### Western Blot

Western blot analysis of Lane 1: HeLa whole cell lysate, Lane 2: A549 whole cell lysate and Lane 3: U2OS whole cell lysate with PVR recombinant monoclonal antibody, clone R01-8A1 (Cat # RAB04468).

## Specification

<b>Product Description</b>	Rabbit recombinant monoclonal antibody raised against human PVR.
<b>Antibody Species</b>	Rabbit
<b>Immunogen</b>	Original antibody is raised against recombinant protein corresponding to human PVR.
<b>Theoretical MW (kDa)</b>	Calculated MW: 45 kD
<b>Reactivity</b>	Human
<b>Form</b>	Liquid
<b>Purification</b>	Affinity chromatography
<b>Isotype</b>	IgG
<b>Recommend Usage</b>	Western Blot (1:500-1:1000) The optimal working dilution should be determined by the end user.
<b>Storage Buffer</b>	In 50mM Tris-Glycine, 150mM NaCl, pH 7.4 (40% glycerol, 0.05% BSA and 0.01% Sodium azide)

**Storage Instruction**

Store at 4°C. For long term storage store at -20°C.  
Aliquot to avoid repeated freezing and thawing.

**Note**

This product contains sodium azide: a POISONOUS AND HAZARDOUS SUBSTANCE which should be handled by trained staff only.

## Applications

- Western Blot

Western blot analysis of Lane 1: HeLa whole cell lysate, Lane 2: A549 whole cell lysate and Lane 3: U2OS whole cell lysate with PVR recombinant monoclonal antibody, clone R01-8A1 (Cat # RAB04468).

## Gene Info — PVR

**Entrez GeneID**[5817](#)**Protein Accession#**[P15151](#)**Gene Name**

PVR

**Gene Alias**

CD155, FLJ25946, HVED, NECL5, Necl-5, PVS, TAGE4

**Gene Description**

poliovirus receptor

**Omim ID**[173850](#)**Gene Ontology**[Hyperlink](#)**Gene Summary**

The protein encoded by this gene is a transmembrane glycoprotein belonging to the immunoglobulin superfamily. The external domain mediates cell attachment to the extracellular matrix molecule vitronectin, while its intracellular domain interacts with the dynein light chain Tctex-1/DYNLT1. The gene is specific to the primate lineage, and serves as a cellular receptor for poliovirus in the first step of poliovirus replication. Multiple transcript variants encoding different isoforms have been found for this gene. [provided by RefSeq]

**Other Designations**

nectin-like 5

## Pathway

- [Cell adhesion molecules \(CAMs\)](#)

## Disease

- [Amyotrophic lateral sclerosis](#)
- [Cleft Lip](#)
- [Cleft Palate](#)
- [Motor Neuron Disease](#)
- [Muscular Atrophy](#)
- [Spinal muscular atrophy](#)