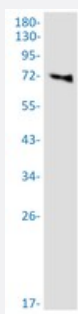


RecomAb™

# PREPL recombinant monoclonal antibody, clone R02-3I8

Catalog # RAB04466      Size 100 uL

## Applications



### Western Blot

Western blot analysis of mouse brain tissue with PREPL recombinant monoclonal antibody, clone R02-3I8 (Cat # RAB04466).

### Immunocytochemistry

Immunocytochemistry staining of U87 MG cells with PREPL recombinant monoclonal antibody, clone R02-3I8 (Cat # RAB04466) (green). DAPI was stained the cell nucleus (blue).

## Specification

Product Description	Rabbit recombinant monoclonal antibody raised against human PREPL.
Antibody Species	Rabbit
Immunogen	Original antibody is raised against a synthetic peptide corresponding to human PREPL.
Theoretical MW (kDa)	Calculated MW: 84 kD
Reactivity	Human, Mouse, Rat
Form	Liquid

Purification	Affinity chromatography
Isotype	IgG
Recommend Usage	Immunocytochemistry Immunofluorescence (1:50-1:200) Immunoprecipitation (1:20) Western Blot (1:500-1:1000) The optimal working dilution should be determined by the end user.
Storage Buffer	In 50mM Tris-Glycine, 150mM NaCl, pH 7.4 (40% glycerol, 0.05% BSA and 0.01% Sodium azide)
Storage Instruction	Store at 4°C. For long term storage store at -20°C. Aliquot to avoid repeated freezing and thawing.
Note	This product contains sodium azide: a POISONOUS AND HAZARDOUS SUBSTANCE which should be handled by trained staff only.

## Applications

- Western Blot

Western blot analysis of mouse brain tissue with PREPL recombinant monoclonal antibody, clone R02-3I8 (Cat # RAB04466).

- Immunocytochemistry

Immunocytochemistry staining of U87 MG cells with PREPL recombinant monoclonal antibody, clone R02-3I8 (Cat # RAB04466) (green). DAPI was stained the cell nucleus (blue).

- Immunofluorescence

- Immunoprecipitation

## Gene Info — PREPL

Entrez GeneID	<a href="#">9581</a>
Protein Accession#	<a href="#">Q4J6C6</a>
Gene Name	PREPL
Gene Alias	FLJ16627, KIAA0436
Gene Description	prolyl endopeptidase-like
Omim ID	<a href="#">609557</a>

**Gene Ontology**[Hyperlink](#)**Gene Summary**

PREPL belongs to the prolyl oligopeptidase subfamily of serine peptidases (Parvari et al., 2005 [PubMed 15913950]).[supplied by OMIM]

**Other Designations**

putative prolyl oligopeptidase