

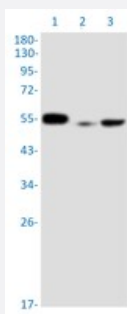
RecomAb™

# PPP2R5E recombinant monoclonal antibody, clone R06-4E6

Catalog # RAB04464

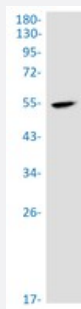
Size 100 uL

## Applications



### Western Blot

Western blot analysis of Lane 1: A549 whole cell lysate, Lane 2: HL-60 whole cell lysate and Lane 3: U251 whole cell lysate with PPP2R5E recombinant monoclonal antibody, clone R06-4E6 (Cat # RAB04464).



### Western Blot

Western blot analysis of rat brain tissue with PPP2R5E recombinant monoclonal antibody, clone R06-4E6 (Cat # RAB04464).

## Specification

Product Description	Rabbit recombinant monoclonal antibody raised against human PPP2R5E.
Antibody Species	Rabbit
Immunogen	Original antibody is raised against a synthetic peptide corresponding to human PPP2R5E.
Theoretical MW (kDa)	Calculated MW: 55 kD
Reactivity	Human, Rat
Form	Liquid

<b>Purification</b>	Affinity chromatography
<b>Isotype</b>	IgG
<b>Recommend Usage</b>	Immunocytochemistry Immunofluorescence (1:50-1:200) Western Blot (1:500-1:1000) The optimal working dilution should be determined by the end user.
<b>Storage Buffer</b>	In 50mM Tris-Glycine, 150mM NaCl, pH 7.4 (40% glycerol, 0.05% BSA and 0.01% Sodium azide)
<b>Storage Instruction</b>	Store at 4°C. For long term storage store at -20°C. Aliquot to avoid repeated freezing and thawing.
<b>Note</b>	This product contains sodium azide: a POISONOUS AND HAZARDOUS SUBSTANCE which should be handled by trained staff only.

## Applications

- Western Blot

Western blot analysis of Lane 1: A549 whole cell lysate, Lane 2: HL-60 whole cell lysate and Lane 3: U251 whole cell lysate with PPP2R5E recombinant monoclonal antibody, clone R06-4E6 (Cat # RAB04464).

- Western Blot

Western blot analysis of rat brain tissue with PPP2R5E recombinant monoclonal antibody, clone R06-4E6 (Cat # RAB04464).

- Immunocytochemistry

- Immunofluorescence

## Gene Info — PPP2R5E

<b>Entrez GeneID</b>	<a href="#">5529</a>
<b>Protein Accession#</b>	<a href="#">Q16537</a>
<b>Gene Name</b>	PPP2R5E
<b>Gene Alias</b>	-
<b>Gene Description</b>	protein phosphatase 2, regulatory subunit B', epsilon isoform
<b>Omim ID</b>	<a href="#">601647</a>

## Gene Ontology

[Hyperlink](#)

## Gene Summary

The product of this gene belongs to the phosphatase 2A regulatory subunit B family. Protein phosphatase 2A is one of the four major Ser/Thr phosphatases, and it is implicated in the negative control of cell growth and division. It consists of a common heteromeric core enzyme, which is composed of a catalytic subunit and a constant regulatory subunit, that associates with a variety of regulatory subunits. The B regulatory subunit might modulate substrate selectivity and catalytic activity. This gene encodes an epsilon isoform of the regulatory subunit B56 subfamily. [provided by RefSeq]

## Other Designations

PP2A, B subunit, B' epsilon|PP2A, B subunit, B56 epsilon|PP2A, B subunit, PR61 epsilon|PP2A, B subunit, R5 epsilon|epsilon isoform of regulatory subunit B56, protein phosphatase 2A|protein phosphatase 2, regulatory subunit B (B56), epsilon isoform|serine/

## Pathway

- [Wnt signaling pathway](#)

## Disease

- [Breast Diseases](#)
- [Breast Neoplasms](#)
- [Precancerous Conditions](#)