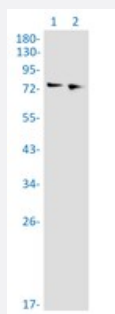


RecomAb™

# CUX1 recombinant monoclonal antibody, clone R03-5F8

Catalog # RAB04462      Size 100 uL

## Applications



### Western Blot

Western blot analysis of Lane 1: 3T3 whole cell lysate and Lane 2: Raw 264.7 whole cell lysate with CUX1 recombinant monoclonal antibody, clone R03-5F8 (Cat # RAB04462).

### Immunocytochemistry

Immunocytochemistry staining of A549 cells with CUX1 recombinant monoclonal antibody, clone R03-5F8 (Cat # RAB04462) (green). DAPI was stained the cell nucleus (blue).

## Specification

<b>Product Description</b>	Rabbit recombinant monoclonal antibody raised against human CUX1.
<b>Antibody Species</b>	Rabbit
<b>Immunogen</b>	Original antibody is raised against recombinant protein corresponding to human CUX1.
<b>Theoretical MW (kDa)</b>	Calculated MW: 77 kD
<b>Reactivity</b>	Human, Mouse, Rat
<b>Form</b>	Liquid

<b>Purification</b>	Affinity chromatography
<b>Isotype</b>	IgG
<b>Recommend Usage</b>	Immunocytochemistry Immunofluorescence (1:50-1:200) Immunoprecipitation (1:20) Western Blot (1:500-1:1000) The optimal working dilution should be determined by the end user.
<b>Storage Buffer</b>	In 50mM Tris-Glycine, 150mM NaCl, pH 7.4 (40% glycerol, 0.05% BSA and 0.01% Sodium azide)
<b>Storage Instruction</b>	Store at 4°C. For long term storage store at -20°C. Aliquot to avoid repeated freezing and thawing.
<b>Note</b>	This product contains sodium azide: a POISONOUS AND HAZARDOUS SUBSTANCE which should be handled by trained staff only.

## Applications

- Western Blot

Western blot analysis of Lane 1: 3T3 whole cell lysate and Lane 2: Raw 264.7 whole cell lysate with CUX1 recombinant monoclonal antibody, clone R03-5F8 (Cat # RAB04462).

- Immunocytochemistry

Immunocytochemistry staining of A549 cells with CUX1 recombinant monoclonal antibody, clone R03-5F8 (Cat # RAB04462) (green). DAPI was stained the cell nucleus (blue).

- Immunofluorescence

- Immunoprecipitation

## Gene Info — CUX1

<b>Entrez GeneID</b>	<a href="#">1523</a>
<b>Protein Accession#</b>	<a href="#">Q13948</a>
<b>Gene Name</b>	CUX1
<b>Gene Alias</b>	CASP, CDP, CDP/Cut, CDP1, COY1, CUTL1, CUX, Clox, Cux/CDP, GOLIM6, Nbla10317, p100, p110, p200, p75
<b>Gene Description</b>	cut-like homeobox 1

**Omim ID** [116896](#)

**Gene Ontology** [Hyperlink](#)

**Gene Summary** The protein encoded by this gene is a member of the homeodomain family of DNA binding proteins. It may regulate gene expression, morphogenesis, and differentiation and it may also play a role in the cell cycle progression. Several alternatively spliced transcript variants of this gene have been described, but the full-length nature of some of these variants has not been determined. [provided by RefSeq]

**Other Designations** cut homeobox|cut homolog|cut-like 1, CCAAT displacement protein|golgi integral membrane protein 6|putative protein product of Nbla10317

## Disease

- [Tobacco Use Disorder](#)