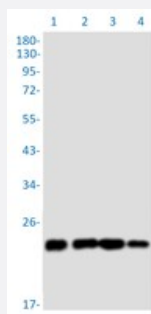


RecomAb™

RAB29 recombinant monoclonal antibody, clone R08-3C0

Catalog # RAB04457 Size 100 uL

Applications



Western Blot

Western blot analysis of Lane 1: HeLa whole cell lysate, Lane 2: A549 whole cell lysate, Lane 3: HL-60 whole cell lysate and Lane 4: U251 whole cell lysate with RAB29 recombinant monoclonal antibody, clone R08-3C0 (Cat # RAB04457).

Specification

Product Description	Rabbit recombinant monoclonal antibody raised against human RAB29.
Antibody Species	Rabbit
Immunogen	Original antibody is raised against recombinant protein corresponding to human RAB29.
Theoretical MW (kDa)	Calculated MW: 23 kD
Reactivity	Human
Form	Liquid
Purification	Affinity chromatography
Isotype	IgG
Recommend Usage	Immunoprecipitation (1:20) Western Blot (1:500-1:1000) The optimal working dilution should be determined by the end user.
Storage Buffer	In 50mM Tris-Glycine, 150mM NaCl, pH 7.4 (40% glycerol, 0.05% BSA and 0.01% Sodium azide)

Storage Instruction

Store at 4°C. For long term storage store at -20°C.
Aliquot to avoid repeated freezing and thawing.

Note

This product contains sodium azide: a POISONOUS AND HAZARDOUS SUBSTANCE which should be handled by trained staff only.

Applications

- Western Blot

Western blot analysis of Lane 1: HeLa whole cell lysate, Lane 2: A549 whole cell lysate, Lane 3: HL-60 whole cell lysate and Lane 4: U251 whole cell lysate with RAB29 recombinant monoclonal antibody, clone R08-3C0 (Cat # RAB04457).

- Immunoprecipitation

Gene Info — RAB7L1

Entrez GeneID[8934](#)**Protein Accession#**[O14966](#)**Gene Name**

RAB7L1

Gene Alias

DKFZp686P1051, RAB7L

Gene Description

RAB7, member RAS oncogene family-like 1

Omim ID[603949](#)**Gene Ontology**[Hyperlink](#)**Gene Summary**

O

Other Designations

OTTHUMP00000034232|OTTHUMP00000034233|OTTHUMP00000034234