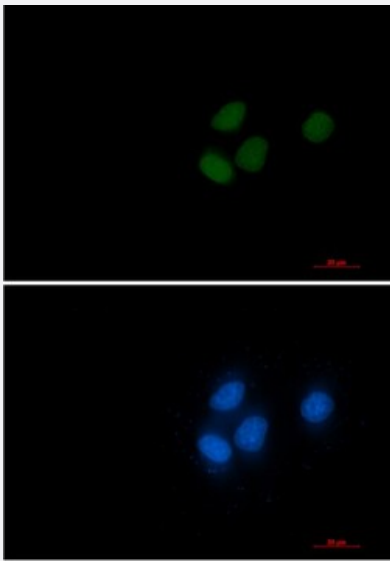


RecomAb™

RCC1 recombinant monoclonal antibody, clone R04-4A8

Catalog # RAB04452 Size 100 uL

Applications



Immunocytochemistry

Immunocytochemistry staining of HeLa cells with RCC1 recombinant monoclonal antibody, clone R04-4A8 (Cat # RAB04452) (green). DAPI was stained the cell nucleus (blue).

Specification

Product Description	Rabbit recombinant monoclonal antibody raised against human RCC1.
Antibody Species	Rabbit
Immunogen	Original antibody is raised against a synthetic peptide corresponding to human RCC1.
Theoretical MW (kDa)	Calculated MW: 45 kD
Reactivity	Human
Form	Liquid
Purification	Affinity chromatography
Isotype	IgG

Recommend Usage	Immunocytochemistry Immunofluorescence (1:50-1:200) Immunoprecipitation (1:20) Western Blot (1:500-1:1000) The optimal working dilution should be determined by the end user.
Storage Buffer	In 50mM Tris-Glycine, 150mM NaCl, pH 7.4 (40% glycerol, 0.05% BSA and 0.01% Sodium azide)
Storage Instruction	Store at 4°C. For long term storage store at -20°C. Aliquot to avoid repeated freezing and thawing.
Note	This product contains sodium azide: a POISONOUS AND HAZARDOUS SUBSTANCE which should be handled by trained staff only.

Applications

- Western Blot
- Immunocytochemistry
Immunocytochemistry staining of HeLa cells with RCC1 recombinant monoclonal antibody, clone R04-4A8 (Cat # RAB04452) (green). DAPI was stained the cell nucleus (blue).
- Immunofluorescence
- Immunoprecipitation

Gene Info — RCC1

Entrez GeneID	1104
Protein Accession#	P18754
Gene Name	RCC1
Gene Alias	CHC1, RCC1-I
Gene Description	regulator of chromosome condensation 1
Omim ID	179710
Gene Ontology	Hyperlink
Other Designations	OTTHUMP00000003775 OTTHUMP00000003776 OTTHUMP00000003777 chromosome condensation 1 guanine nucleotide-releasing protein