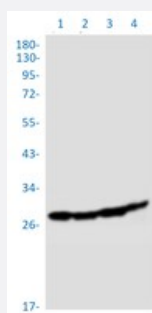


RecomAb™

SBDS recombinant monoclonal antibody, clone R02-2G2

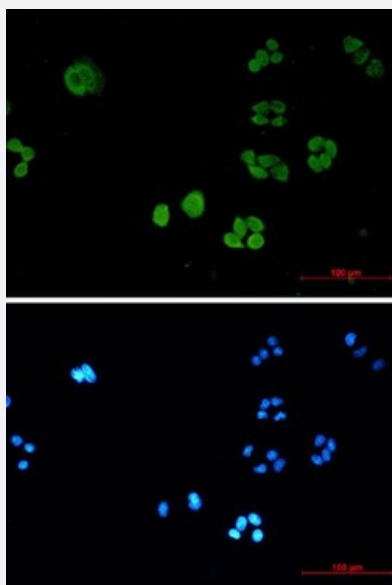
Catalog # RAB04445 Size 100 uL

Applications



Western Blot

Western blot analysis of Lane 1: A549 whole cell lysate, Lane 2: HL-60 whole cell lysate, Lane 3: U2OS whole cell lysate and Lane 4: U87 MG whole cell lysate with SBDS recombinant monoclonal antibody, clone R02-2G2 (Cat # RAB04445).



Immunocytochemistry

Immunocytochemistry staining of HeLa cells with SBDS recombinant monoclonal antibody, clone R02-2G2 (Cat # RAB04445) (green). DAPI was stained the cell nucleus (blue).

Specification

Product Description	Rabbit recombinant monoclonal antibody raised against human SBDS.
Antibody Species	Rabbit
Immunogen	Original antibody is raised against a synthetic peptide corresponding to human SBDS.

Theoretical MW (kDa)	Calculated MW: 29 kD
Reactivity	Human
Form	Liquid
Purification	Affinity chromatography
Isotype	IgG
Recommend Usage	Immunocytochemistry Immunofluorescence (1:50-1:200) Immunoprecipitation (1:20) Western Blot (1:500-1:1000) The optimal working dilution should be determined by the end user.
Storage Buffer	In 50mM Tris-Glycine, 150mM NaCl, pH 7.4 (40% glycerol, 0.05% BSA and 0.01% Sodium azide)
Storage Instruction	Store at 4°C. For long term storage store at -20°C. Aliquot to avoid repeated freezing and thawing.
Note	This product contains sodium azide: a POISONOUS AND HAZARDOUS SUBSTANCE which should be handled by trained staff only.

Applications

- Western Blot

Western blot analysis of Lane 1: A549 whole cell lysate, Lane 2: HL-60 whole cell lysate, Lane 3: U2OS whole cell lysate and Lane 4: U87 MG whole cell lysate with SBDS recombinant monoclonal antibody, clone R02-2G2 (Cat # RAB04445).

- Immunocytochemistry

Immunocytochemistry staining of HeLa cells with SBDS recombinant monoclonal antibody, clone R02-2G2 (Cat # RAB04445) (green). DAPI was stained the cell nucleus (blue).

- Immunofluorescence

- Immunoprecipitation

Gene Info — SBDS

Entrez GeneID	51119
Protein Accession#	Q9Y3A5

Gene Name	SBDS
Gene Alias	CGI-97, FLJ10917, SDS, SWDS
Gene Description	Shwachman-Bodian-Diamond syndrome
Omim ID	260400 607444
Gene Ontology	Hyperlink
Gene Summary	This gene encodes a member of a highly conserved protein family that exists from archaea to vertebrates and plants. The encoded protein may function in RNA metabolism. Mutations within this gene are associated with Shwachman-Bodian-Diamond syndrome. An alternative transcript has been described, but its biological nature has not been determined. This gene has a closely linked pseudogene that is distally located. [provided by RefSeq]
Other Designations	Shwachman-Bodian-Diamond syndrome protein

Disease

- [Anemia](#)