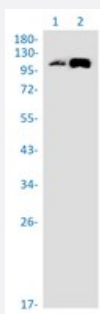


RecomAb™

SEC24D recombinant monoclonal antibody, clone R01-5G5

Catalog # RAB04444 Size 100 uL

Applications



Western Blot

Western blot analysis of Lane 1: Raw 264.7 whole cell lysate and Lane 2: C6 whole cell lysate with SEC24D recombinant monoclonal antibody, clone R01-5G5 (Cat # RAB04444).

Specification

Product Description	Rabbit recombinant monoclonal antibody raised against human SEC24D.
Antibody Species	Rabbit
Immunogen	Original antibody is raised against a synthetic peptide corresponding to human SEC24D.
Theoretical MW (kDa)	Calculated MW: 113 k
Reactivity	Human, Mouse, Rat
Form	Liquid
Purification	Affinity chromatography
Isotype	IgG
Recommend Usage	Western Blot (1:500-1:1000) The optimal working dilution should be determined by the end user.
Storage Buffer	In 50mM Tris-Glycine, 150mM NaCl, pH 7.4 (40% glycerol, 0.05% BSA and 0.01% Sodium azide)

Storage Instruction

Store at 4°C. For long term storage store at -20°C.
Aliquot to avoid repeated freezing and thawing.

Note

This product contains sodium azide: a POISONOUS AND HAZARDOUS SUBSTANCE which should be handled by trained staff only.

Applications

- Western Blot

Western blot analysis of Lane 1: Raw 264.7 whole cell lysate and Lane 2: C6 whole cell lysate with SEC24D recombinant monoclonal antibody, clone R01-5G5 (Cat # RAB04444).

Gene Info — SEC24D

Entrez GeneID[9871](#)**Protein Accession#**[O94855](#)**Gene Name**

SEC24D

Gene Alias

FLJ43974, KIAA0755

Gene Description

SEC24 family, member D (S. cerevisiae)

Omim ID[607186](#)**Gene Ontology**[Hyperlink](#)**Gene Summary**

The protein encoded by this gene is a member of the SEC24 subfamily of the SEC23/SEC24 family, which is involved in vesicle trafficking. The encoded protein has similarity to yeast Sec24p component of COPII. COPII is the coat protein complex responsible for vesicle budding from the ER. This gene product is implicated in the shaping of the vesicle, and also in cargo selection and concentration. [provided by RefSeq]

Other Designations

SEC24 related gene family, member D|Sec24-related protein D|protein transport protein Sec24D

Disease

- [Alcoholism](#)
- [Genetic Predisposition to Disease](#)
- [Tobacco Use Disorder](#)