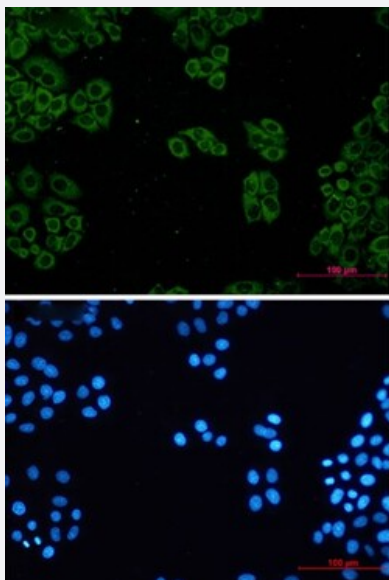


RecomAb™

TCP1 recombinant monoclonal antibody, clone R06-8G2

Catalog # RAB04437 Size 100 uL

Applications



Immunocytochemistry

Immunocytochemistry staining of HeLa cells with TCP1 recombinant monoclonal antibody, clone R06-8G2 (Cat # RAB04437) (green). DAPI was stained the cell nucleus (blue).

Specification

Product Description	Rabbit recombinant monoclonal antibody raised against human TCP1.
Antibody Species	Rabbit
Immunogen	Original antibody is raised against a synthetic peptide corresponding to human TCP1.
Theoretical MW (kDa)	Calculated MW: 60 kD
Reactivity	Hamster, Human
Form	Liquid
Purification	Affinity purification
Isotype	IgG

Recommend Usage	Immunocytochemistry Immunofluorescence (1:50-1:200) Immunohistochemistry (1:50-1:100) Immunoprecipitation (1:20) Western Blot (1:500-1:1000) The optimal working dilution should be determined by the end user.
Storage Buffer	In 50 mM Tris-Glycine, pH 7.4 (0.15 M NaCl, 40% Glycerol, 0.01% Sodium azide and 0.05% BSA)
Storage Instruction	Store at 4°C. For long term storage store at -20°C. Aliquot to avoid repeated freezing and thawing.
Note	This product contains sodium azide: a POISONOUS AND HAZARDOUS SUBSTANCE which should be handled by trained staff only.

Applications

- Western Blot
- Immunohistochemistry
- Immunocytochemistry
- Immunofluorescence
- Immunoprecipitation

Immunocytochemistry staining of HeLa cells with TCP1 recombinant monoclonal antibody, clone R06-8G2 (Cat # RAB04437) (green). DAPI was stained the cell nucleus (blue).

Gene Info — TCP1

Entrez GeneID	6950
Protein Accession#	P17987
Gene Name	TCP1
Gene Alias	CCT-alpha, CCT1, CCTa, D6S230E, TCP-1-alpha
Gene Description	t-complex 1
Omim ID	186980
Gene Ontology	Hyperlink

Gene Summary

This gene encodes a molecular chaperone that is member of the chaperonin containing TCP1 complex (CCT), also known as the TCP1 ring complex (TRiC). This complex consists of two identical stacked rings, each containing eight different proteins. Unfolded polypeptides enter the central cavity of the complex and are folded in an ATP-dependent manner. The complex folds various proteins, including actin and tubulin. Alternate transcriptional splice variants of this gene, encoding different isoforms, have been characterized. [provided by RefSeq]

Other Designations

OTTHUMP00000017529|T-complex protein 1|T-complex protein 1, alpha subunit|tailless complex polypeptide 1

Disease

- [Cardiovascular Diseases](#)
- [Diabetes Mellitus](#)
- [Edema](#)
- [Genetic Predisposition to Disease](#)
- [Mucocutaneous Lymph Node Syndrome](#)
- [Schizophrenia](#)