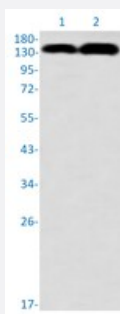


RecomAb™

GTF2I recombinant monoclonal antibody, clone R01-1F4

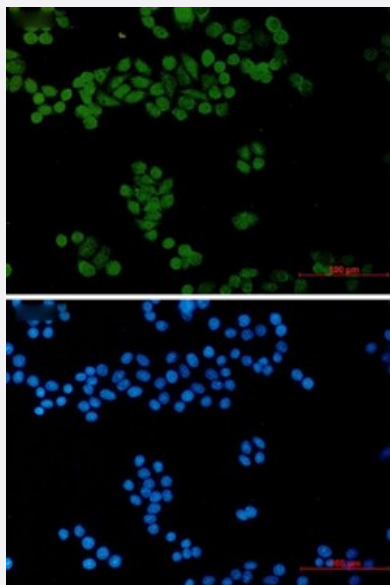
Catalog # RAB04435 Size 100 uL

Applications



Western Blot

Western blot analysis of Lane 1: A549 whole cell lysate and Lane 2: HL-60 whole cell lysate with GTF2I recombinant monoclonal antibody, clone R01-1F4 (Cat # RAB04435).



Immunocytochemistry

Immunocytochemistry staining of HeLa cells with GTF2I recombinant monoclonal antibody, clone R01-1F4 (Cat # RAB04435) (green). DAPI was stained the cell nucleus (blue).

Specification

Product Description	Rabbit recombinant monoclonal antibody raised against human GTF2I.
Antibody Species	Rabbit
Immunogen	Original antibody is raised against a synthetic peptide corresponding to human GTF2I.

Theoretical MW (kDa)	Calculated MW: 112 k
Reactivity	Human
Form	Liquid
Purification	Affinity purification
Isotype	IgG
Recommend Usage	Immunocytochemistry Immunofluorescence (1:50-1:200) Immunohistochemistry (1:50-1:100) Western Blot (1:500-1:1000) The optimal working dilution should be determined by the end user.
Storage Buffer	In 50 mM Tris-Glycine, pH 7.4 (0.15 M NaCl, 40% Glycerol, 0.01% Sodium azide and 0.05% BSA)
Storage Instruction	Store at 4°C. For long term storage store at -20°C. Aliquot to avoid repeated freezing and thawing.
Note	This product contains sodium azide: a POISONOUS AND HAZARDOUS SUBSTANCE which should be handled by trained staff only.

Applications

- Western Blot

Western blot analysis of Lane 1: A549 whole cell lysate and Lane 2: HL-60 whole cell lysate with GTF2I recombinant monoclonal antibody, clone R01-1F4 (Cat # RAB04435).

- Immunohistochemistry

- Immunocytochemistry

Immunocytochemistry staining of HeLa cells with GTF2I recombinant monoclonal antibody, clone R01-1F4 (Cat # RAB04435) (green). DAPI was stained the cell nucleus (blue).

- Immunofluorescence

Gene Info — GTF2I

Entrez GeneID	2969
Protein Accession#	P78347

Gene Name	GTF2I
Gene Alias	BAP-135, BAP135, BTKAP1, DIWS, FLJ38776, FLJ56355, IB291, SPIN, TFII-I, WBS, WBSCR6
Gene Description	general transcription factor II, i
Omim ID	194050 601679
Gene Ontology	Hyperlink
Gene Summary	This gene encodes a multifunctional phosphoprotein with roles in transcription and signal transduction. It is deleted in Williams-Beuren syndrome, a multisystem developmental disorder caused by the deletion of contiguous genes at chromosome 7q11.23. Alternative splicing results in multiple transcript variants. Related pseudogenes have been identified on chromosomes 7, 13 and 21. [provided by RefSeq]
Other Designations	BTK-associated protein, 135kD Bruton tyrosine kinase-associated protein 135 Williams-Beuren syndrome chromosome region 6

Pathway

- [Basal transcription factors](#)