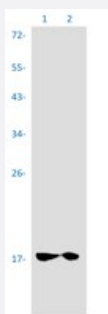


RecomAb™

# UBE2L3 recombinant monoclonal antibody, clone R02-4B2

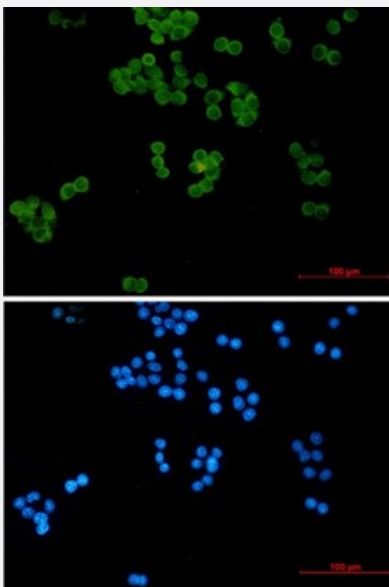
Catalog # RAB04422      Size 100 uL

## Applications



### Western Blot

Western blot analysis of Lane 1: 3T3 whole cell lysate and Lane 2: mouse kidney tissue with UBE2L3 recombinant monoclonal antibody, clone R02-4B2 (Cat # RAB04422).



### Immunocytochemistry

Immunocytochemistry staining of HeLa cells with UBE2L3 recombinant monoclonal antibody, clone R02-4B2 (Cat # RAB04422) (green). DAPI was stained the cell nucleus (blue).

## Specification

<b>Product Description</b>	Rabbit recombinant monoclonal antibody raised against human UBE2L3.
<b>Antibody Species</b>	Rabbit
<b>Immunogen</b>	Original antibody is raised against a synthetic peptide corresponding to human UBE2L3.

Theoretical MW (kDa)	Calculated MW: 18 kD
Reactivity	Human, Mouse, Rat
Form	Liquid
Purification	Affinity purification
Isotype	IgG
Recommend Usage	Immunocytochemistry Immunofluorescence (1:50-1:200) Immunoprecipitation (1:20) Western Blot (1:500-1:1000) The optimal working dilution should be determined by the end user.
Storage Buffer	In 50 mM Tris-Glycine, pH 7.4 (0.15 M NaCl, 40% Glycerol, 0.01% Sodium azide and 0.05% BSA)
Storage Instruction	Store at 4°C. For long term storage store at -20°C. Aliquot to avoid repeated freezing and thawing.
Note	This product contains sodium azide: a POISONOUS AND HAZARDOUS SUBSTANCE which should be handled by trained staff only.

## Applications

- Western Blot

Western blot analysis of Lane 1: 3T3 whole cell lysate and Lane 2: mouse kidney tissue with UBE2L3 recombinant monoclonal antibody, clone R02-4B2 (Cat # RAB04422).

- Immunocytochemistry

Immunocytochemistry staining of HeLa cells with UBE2L3 recombinant monoclonal antibody, clone R02-4B2 (Cat # RAB04422) (green). DAPI was stained the cell nucleus (blue).

- Immunofluorescence

- Immunoprecipitation

## Gene Info — UBE2L3

Entrez GeneID	<a href="#">7332</a>
Protein Accession#	<a href="#">P68036</a>

Gene Name	UBE2L3
Gene Alias	E2-F1, L-UBC, UBCH7, UbcM4
Gene Description	ubiquitin-conjugating enzyme E2L 3
Omim ID	<a href="#">603721</a>
Gene Ontology	<a href="#">Hyperlink</a>
Gene Summary	<p>The modification of proteins with ubiquitin is an important cellular mechanism for targeting abnormal or short-lived proteins for degradation. Ubiquitination involves at least three classes of enzymes: ubiquitin-activating enzymes (E1s), ubiquitin-conjugating enzymes (E2s) and ubiquitin-protein ligases (E3s). This gene encodes a member of the E2 ubiquitin-conjugating enzyme family. This enzyme is demonstrated to participate in the ubiquitination of p53, c-Fos, and the NF-kB precursor p105 in vitro. Several alternatively spliced transcript variants have been found for this gene. [provided by RefSeq]</p>
Other Designations	ubiquitin carrier protein ubiquitin-conjugating enzyme UBCH7 ubiquitin-protein ligase

## Pathway

- [Ubiquitin mediated proteolysis](#)

## Disease

- [Crohn Disease](#)
- [Genetic Predisposition to Disease](#)