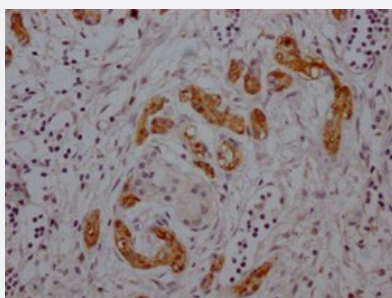


RecomAb™

MDK recombinant monoclonal antibody, clone 2G3

Catalog # RAB04396 Size 100 uL

Applications



Immunohistochemistry

Immunohistochemical staining of human pancreatic cancer with MDK recombinant monoclonal antibody, clone 2G3 (Cat # RAB04396) (diluted at 1:100).

Specification

Product Description	Rabbit recombinant monoclonal antibody raised against human MDK.
Antibody Species	Rabbit
Immunogen	Original antibody is raised against a synthetic peptide corresponding to human MDK.
Reactivity	Human
Form	Liquid
Purification	Affinity chromatography
Isotype	IgG
Recommend Usage	ELISA Immunohistochemistry (1:50-1:200) The optimal working dilution should be determined by the end user.
Storage Buffer	In PBS, pH7.4 (150 mM NaCl, 50% glycerol and 0.02% sodium azide)
Storage Instruction	Store at -20°C or -80°C. Aliquot to avoid repeated freezing and thawing.

Note

This product contains sodium azide: a POISONOUS AND HAZARDOUS SUBSTANCE which should be handled by trained staff only.

Applications

- Immunohistochemistry

Immunohistochemical staining of human pancreatic cancer with MDK recombinant monoclonal antibody, clone 2G3 (Cat # RAB04396) (diluted at 1:100).

- Enzyme-linked Immunoabsorbent Assay

Gene Info — MDK

Entrez GeneID	4192
---------------	----------------------

Protein Accession#	P21741
--------------------	------------------------

Gene Name	MDK
-----------	-----

Gene Alias	FLJ27379, MK, NEGF2
------------	---------------------

Gene Description	midkine (neurite growth-promoting factor 2)
------------------	---

Omim ID	162096
---------	------------------------

Gene Ontology	Hyperlink
---------------	---------------------------

Other Designations	midkine
--------------------	---------

Disease

- [Breast cancer](#)
- [Colorectal Neoplasms](#)