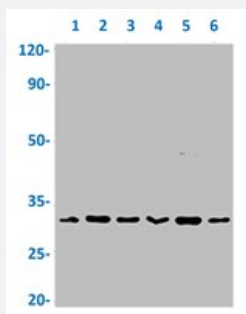


RecomAb™

CD8A recombinant monoclonal antibody, clone 2F2

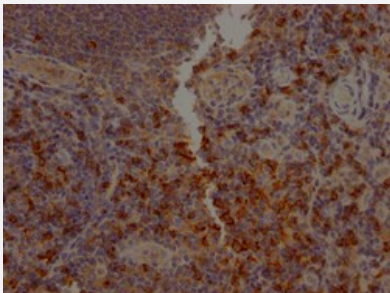
Catalog # RAB04395 Size 100 uL

Applications



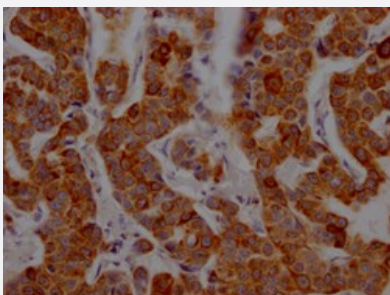
Western Blot

Western blot analysis of Lane 1: MCF-7 whole cell lysate, Lane 2: THP-1 whole cell lysate, Lane 3: PC3 whole cell lysate, Lane 4: 293 whole cell lysate, Lane 5: HepG2 whole cell lysate and Lane 6: A549 whole cell lysate with CD8A recombinant monoclonal antibody, clone 2F2 (Cat # RAB04395).



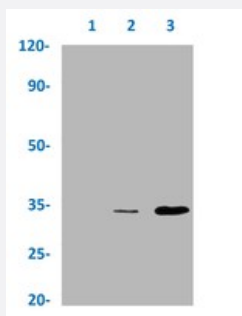
Immunohistochemistry

Immunohistochemical staining of human tonsil tissue with CD8A recombinant monoclonal antibody, clone 2F2 (Cat # RAB04395) (diluted at 1:100).



Immunohistochemistry

Immunohistochemical staining of human breast cancer with CD8A recombinant monoclonal antibody, clone 2F2 (Cat # RAB04395) (diluted at 1:100).



Immunoprecipitation

Immunoprecipitation analysis of HepG2 cell lysate with CD8A recombinant monoclonal antibody, clone 2F2 (Cat # RAB04395).

Lane 1: rabbit control IgG, Lane 2: RAB04395 precipitates and Lane 3: Input (HepG2 whole cell lysates).

Specification

Product Description	Rabbit recombinant monoclonal antibody raised against human CD8A.
Antibody Species	Rabbit
Immunogen	Original antibody is raised against a synthetic peptide corresponding to human CD8A.
Theoretical MW (kDa)	Calculated MW: 26, 2
Reactivity	Human
Form	Liquid
Purification	Affinity chromatography
Isotype	IgG
Recommend Usage	ELISA Immunohistochemistry (1:50-1:200) Immunoprecipitation (1:200-1:1000) Western Blot (1:500-1:5000) The optimal working dilution should be determined by the end user.
Storage Buffer	In PBS, pH7.4 (150 mM NaCl, 50% glycerol and 0.02% sodium azide)
Storage Instruction	Store at -20°C or -80°C. Aliquot to avoid repeated freezing and thawing.
Note	This product contains sodium azide: a POISONOUS AND HAZARDOUS SUBSTANCE which should be handled by trained staff only.

Applications

- Western Blot

Western blot analysis of Lane 1: MCF-7 whole cell lysate, Lane 2: THP-1 whole cell lysate, Lane 3: PC3 whole cell lysate, Lane 4: 293 whole cell lysate, Lane 5: HepG2 whole cell lysate and Lane 6: A549 whole cell lysate with CD8A recombinant monoclonal antibody, clone 2F2 (Cat # RAB04395).

- Immunohistochemistry

Immunohistochemical staining of human tonsil tissue with CD8A recombinant monoclonal antibody, clone 2F2 (Cat # RAB04395) (diluted at 1:100).

- Immunohistochemistry

Immunohistochemical staining of human breast cancer with CD8A recombinant monoclonal antibody, clone 2F2 (Cat # RAB04395) (diluted at 1:100).

- Immunoprecipitation

Immunoprecipitation analysis of HepG2 cell lysate with CD8A recombinant monoclonal antibody, clone 2F2 (Cat # RAB04395). Lane 1: rabbit control IgG, Lane 2: RAB04395 precipitates and Lane 3: Input (HepG2 whole cell lysates).

- Enzyme-linked Immunoabsorbent Assay

Gene Info — CD8A

Entrez GeneID [925](#)

Protein Accession# [P01732](#)

Gene Name CD8A

Gene Alias CD8, Leu2, MAL, p32

Gene Description CD8a molecule

Omim ID [186910 608957](#)

Gene Ontology [Hyperlink](#)

Gene Summary

The CD8 antigen is a cell surface glycoprotein found on most cytotoxic T lymphocytes that mediates efficient cell-cell interactions within the immune system. The CD8 antigen acts as a coreceptor with the T-cell receptor on the T lymphocyte to recognize antigens displayed by an antigen presenting cell (APC) in the context of class I MHC molecules. The coreceptor functions as either a homodimer composed of two alpha chains, or as a heterodimer composed of one alpha and one beta chain. Both alpha and beta chains share significant homology to immunoglobulin variable light chains. This gene encodes the CD8 alpha chain isoforms. Multiple transcript variants encoding different isoforms have been found for this gene. [provided by RefSeq]

Other Designations

CD8 antigen alpha polypeptide|CD8 antigen, alpha polypeptide (p32)|Leu2 T-lymphocyte antigen|OKT8 T-cell antigen|T cell co-receptor|T-cell antigen Leu2|T-cell surface glycoprotein CD8 alpha chain|T-lymphocyte differentiation antigen T8/Leu-2|T8 T-cell ant

Pathway

- [Antigen processing and presentation](#)
- [Cell adhesion molecules \(CAMs\)](#)
- [Hematopoietic cell lineage](#)
- [Primary immunodeficiency](#)
- [T cell receptor signaling pathway](#)