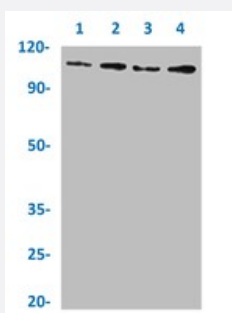


RecomAb™

KDM1A recombinant monoclonal antibody, clone 1G7

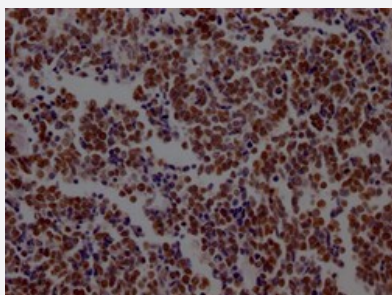
Catalog # RAB04388 Size 100 uL

Applications



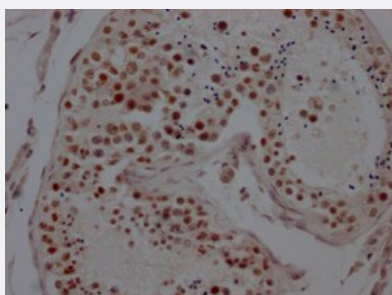
Western Blot

Western blot analysis of Lane 1: MCF-7 whole cell lysate, Lane 2: Jurkat whole cell lysate, Lane 3: PC-3 whole cell lysate and Lane 4: K562 whole cell lysate with KDM1A recombinant monoclonal antibody, clone 1G7 (Cat # RAB04388).



Immunohistochemistry

Immunohistochemical staining of human lung cancer with KDM1A recombinant monoclonal antibody, clone 1G7 (Cat # RAB04388) (diluted at 1:100).



Immunohistochemistry

Immunohistochemical staining of human testis tissue with KDM1A recombinant monoclonal antibody, clone 1G7 (Cat # RAB04388) (diluted at 1:100).

Specification

Product Description

Rabbit recombinant monoclonal antibody raised against human KDM1A.

Antibody Species	Rabbit
Immunogen	Original antibody is raised against a synthetic peptide corresponding to human KDM1A.
Theoretical MW (kDa)	Calculated MW: 93, 9
Reactivity	Human
Form	Liquid
Purification	Affinity chromatography
Isotype	IgG
Recommend Usage	ELISA Immunohistochemistry (1:50-1:200) Western Blot (1:500-1:5000) The optimal working dilution should be determined by the end user.
Storage Buffer	In PBS, pH7.4 (150 mM NaCl, 50% glycerol and 0.02% sodium azide)
Storage Instruction	Store at -20°C or -80°C. Aliquot to avoid repeated freezing and thawing.
Note	This product contains sodium azide: a POISONOUS AND HAZARDOUS SUBSTANCE which should be handled by trained staff only.

Applications

- Western Blot

Western blot analysis of Lane 1: MCF-7 whole cell lysate, Lane 2: Jurkat whole cell lysate, Lane 3: PC-3 whole cell lysate and Lane 4: K562 whole cell lysate with KDM1A recombinant monoclonal antibody, clone 1G7 (Cat # RAB04388).

- Immunohistochemistry

Immunohistochemical staining of human lung cancer with KDM1A recombinant monoclonal antibody, clone 1G7 (Cat # RAB04388) (diluted at 1:100).

- Immunohistochemistry

Immunohistochemical staining of human testis tissue with KDM1A recombinant monoclonal antibody, clone 1G7 (Cat # RAB04388) (diluted at 1:100).

- Enzyme-linked Immunoabsorbent Assay

Gene Info — AOF2

Entrez GeneID	23028
Protein Accession#	O60341
Gene Name	AOF2
Gene Alias	BHC110, KDM1, KIAA0601, LSD1
Gene Description	amine oxidase (flavin containing) domain 2
Omim ID	609132
Gene Ontology	Hyperlink
Gene Summary	This gene encodes a nuclear protein containing a SWIRM domain, a FAD-binding motif, and an amine oxidase domain. This protein is a component of several histone deacetylase complexes, through it silences genes by functioning as a histone demethylase. Alternative splicing results in multiple transcript variants. [provided by RefSeq]
Other Designations	BRAF35-HDAC complex protein BHC110 FAD-binding protein BRAF35-HDAC complex, 110 kDa subunit lysine (K)-specific demethylase 1 lysine-specific histone demethylase 1