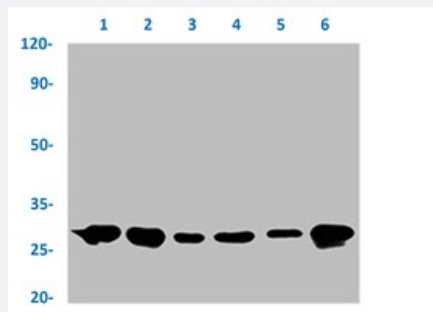


RecomAb™

HSPB1 recombinant monoclonal antibody, clone 10C11

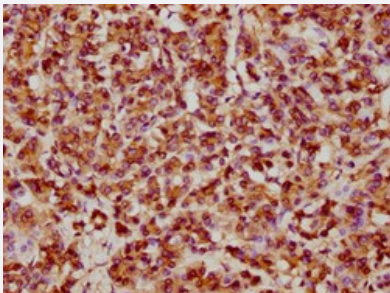
Catalog # RAB04369 Size 100 uL

Applications



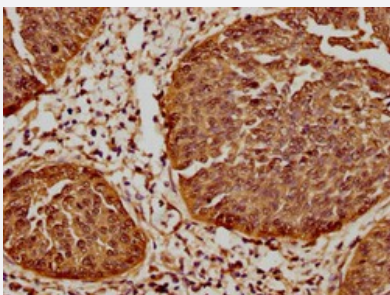
Western Blot

Western blot analysis of Lane 1: Hela whole cell lysate, Lane 2: PC3 whole cell lysate, Lane 3: 293T whole cell lysate, Lane 4: L02 whole cell lysate, Lane 5: HT-29 whole cell lysate and Lane 6: K562 whole cell lysate with HSPB1 recombinant monoclonal antibody, clone 10C11 (Cat # RAB04369).



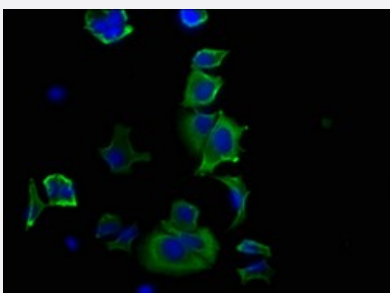
Immunohistochemistry

Immunohistochemical staining of human pancreatic tissue with HSPB1 recombinant monoclonal antibody, clone 10C11 (Cat # RAB04369) (diluted at 1:61.9).



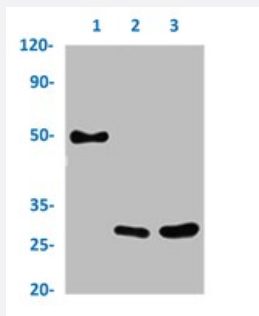
Immunohistochemistry

Immunohistochemical staining of human cervical cancer with HSPB1 recombinant monoclonal antibody, clone 10C11 (Cat # RAB04369) (diluted at 1:61.9).



Immunofluorescence

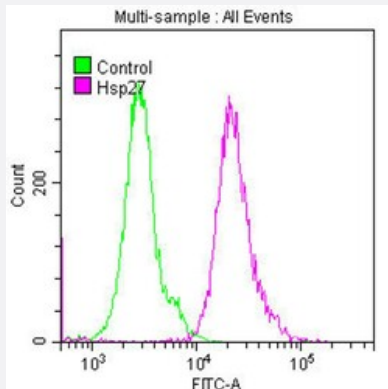
Immunofluorescent staining of MCF-7 cells with HSPB1 recombinant monoclonal antibody, clone 10C11 (Cat # RAB04369) (diluted at 1:20). The secondary antibody was Alexa Fluor 488-conjugated goat anti-rabbit IgG (green). Counter-stain DAPI was used (blue).



Immunoprecipitation

Immunoprecipitation analysis of HeLa cell lysate with HSPB1 recombinant monoclonal antibody, clone 10C11 (Cat # RAB04369).

Lane 1: rabbit control IgG, Lane 2: RAB04369 precipitates and Lane 3: Input (Hela whole cell lysate).



Flow Cytometry

Flow cytometric analysis of HeLa cells with HSPB1 recombinant monoclonal antibody, clone 10C11 (Cat # RAB04369) (diluted at 1:50; purple line) and negative control (green line).

Specification

Product Description	Rabbit recombinant monoclonal antibody raised against human HSPB1.
Antibody Species	Rabbit
Immunogen	Original antibody is raised against a synthetic peptide corresponding to human HSPB1.
Theoretical MW (kDa)	Calculated MW: 23 kD
Reactivity	Human
Form	Liquid
Purification	Affinity chromatography
Isotype	IgG
Recommend Usage	ELISA Flow Cytometry Immunofluorescence (1:20-1:200) Immunohistochemistry (1:50-1:200) Immunoprecipitation (1:200-1:1000) Western Blot (1:500-1:5000) The optimal working dilution should be determined by the end user.

Storage Buffer	In PBS, pH7.4 (150mM NaCl, 50% glycerol and 0.02% sodium azide)
Storage Instruction	Store at -20 °C or -80 °C. Aliquot to avoid repeated freezing and thawing.
Note	This product contains sodium azide: a POISONOUS AND HAZARDOUS SUBSTANCE which should be handled by trained staff only.

Applications

- Western Blot

Western blot analysis of Lane 1: HeLa whole cell lysate, Lane 2: PC3 whole cell lysate, Lane 3: 293T whole cell lysate, Lane 4: L02 whole cell lysate, Lane 5: HT-29 whole cell lysate and Lane 6: K562 whole cell lysate with HSPB1 recombinant monoclonal antibody, clone 10C11 (Cat # RAB04369).

- Immunohistochemistry

Immunohistochemical staining of human pancreatic tissue with HSPB1 recombinant monoclonal antibody, clone 10C11 (Cat # RAB04369) (diluted at 1:61.9).

- Immunohistochemistry

Immunohistochemical staining of human cervical cancer with HSPB1 recombinant monoclonal antibody, clone 10C11 (Cat # RAB04369) (diluted at 1:61.9).

- Immunofluorescence

Immunofluorescent staining of MCF-7 cells with HSPB1 recombinant monoclonal antibody, clone 10C11 (Cat # RAB04369) (diluted at 1:20). The secondary antibody was Alexa Fluor 488-conjugated goat anti-rabbit IgG (green). Counter-stain DAPI was used (blue).

- Immunoprecipitation

Immunoprecipitation analysis of HeLa cell lysate with HSPB1 recombinant monoclonal antibody, clone 10C11 (Cat # RAB04369).

Lane 1: rabbit control IgG, Lane 2: RAB04369 precipitates and Lane 3: Input (HeLa whole cell lysate).

- Enzyme-linked Immunoabsorbent Assay

- Flow Cytometry

Flow cytometric analysis of HeLa cells with HSPB1 recombinant monoclonal antibody, clone 10C11 (Cat # RAB04369) (diluted at 1:50; purple line) and negative control (green line).

Gene Info — HSPB1

Entrez GeneID	3315
Protein Accession#	P04792
Gene Name	HSPB1
Gene Alias	CMT2F, DKFZp586P1322, HMN2B, HS.76067, HSP27, HSP28, Hsp25, SRP27
Gene Description	heat shock 27kDa protein 1
Omim ID	602195 606595 608634
Gene Ontology	Hyperlink
Gene Summary	The protein encoded by this gene is induced by environmental stress and developmental changes . The encoded protein is involved in stress resistance and actin organization and translocates from the cytoplasm to the nucleus upon stress induction. Defects in this gene are a cause of Charcot-Marie-Tooth disease type 2F (CMT2F) and distal hereditary motor neuropathy (dHMN). [provided by RefSeq]
Other Designations	OTTHUMP00000024846 estrogen-regulated 24 kDa protein heat shock 27kD protein 1 heat shock protein beta-1 stress-responsive protein 27

Pathway

- [MAPK signaling pathway](#)
- [VEGF signaling pathway](#)

Disease

- [Adenocarcinoma](#)
- [Carcinoma](#)
- [Charcot-Marie-Tooth Disease](#)
- [Diabetic Nephropathies](#)
- [Genetic Predisposition to Disease](#)
- [Lung Neoplasms](#)
- [Small Cell Lung Carcinoma](#)