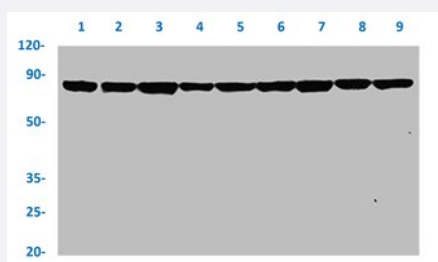


RecomAb™

HSP90AA1 recombinant monoclonal antibody, clone 4B5

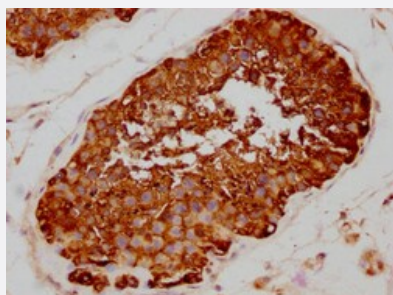
Catalog # RAB04364 Size 100 uL

Applications



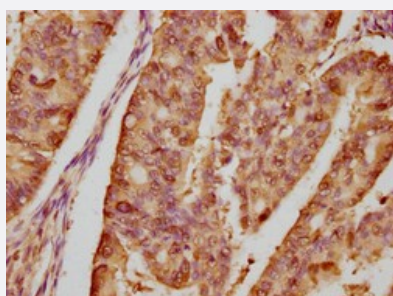
Western Blot

Western blot analysis of Lane 1: Hela whole cell lysate, Lane 2: MCF-7 whole cell lysate, Lane 3: K562 whole cell lysate, Lane 4: HL-60 whole cell lysate, Lane 5: HepG2 whole cell lysate, Lane 6: A549 whole cell lysate, Lane 7: Jurkat whole cell lysate, Lane 8: PC3 whole cell lysate and Lane 9: rat brain tissue with HSP90AA1 recombinant monoclonal antibody, clone 4B5 (Cat # RAB04364).



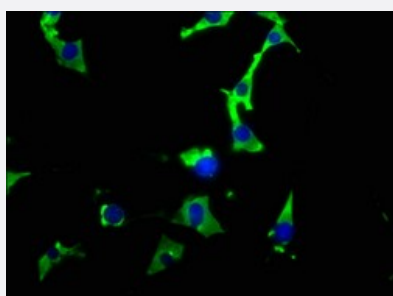
Immunohistochemistry

Immunohistochemical staining of human testis tissue with HSP90AA1 recombinant monoclonal antibody, clone 4B5 (Cat # RAB04364) (diluted at 1:80).



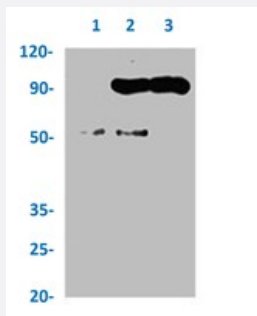
Immunohistochemistry

Immunohistochemical staining of human endometrial cancer with HSP90AA1 recombinant monoclonal antibody, clone 4B5 (Cat # RAB04364) (diluted at 1:80).



Immunofluorescence

Immunofluorescent staining of NIH/3T3 cells with HSP90AA1 recombinant monoclonal antibody, clone 4B5 (Cat # RAB04364) (diluted at 1:100). The secondary antibody was Alexa Fluor 488-conjugated goat anti-rabbit IgG (green). Counter-stain DAPI was used (blue).



Immunoprecipitation

Immunoprecipitation analysis of HeLa cell lysate with HSP90AA1 recombinant monoclonal antibody, clone 4B5 (Cat # RAB04364).

Lane 1: rabbit control IgG, Lane 2: RAB04364 precipitates and Lane 3: Input (Hela whole cell lysate).

Specification

Product Description	Rabbit recombinant monoclonal antibody raised against human HSP90AA1.
Antibody Species	Rabbit
Immunogen	Original antibody is raised against a synthetic peptide corresponding to human HSP90AA1.
Theoretical MW (kDa)	Calculated MW: 85, 9
Reactivity	Human, Rat
Form	Liquid
Purification	Affinity chromatography
Isotype	IgG
Recommend Usage	ELISA Immunofluorescence (1:20-1:200) Immunohistochemistry (1:50-1:200) Immunoprecipitation (1:200-1:1000) Western Blot (1:500-1:5000) The optimal working dilution should be determined by the end user.
Storage Buffer	In PBS, pH7.4 (150mM NaCl, 50% glycerol and 0.02% sodium azide)
Storage Instruction	Store at -20 °C or -80 °C. Aliquot to avoid repeated freezing and thawing.
Note	This product contains sodium azide: a POISONOUS AND HAZARDOUS SUBSTANCE which should be handled by trained staff only.

Applications

- Western Blot

Western blot analysis of Lane 1: Hela whole cell lysate, Lane 2: MCF-7 whole cell lysate, Lane 3: K562 whole cell lysate, Lane 4: HL-60 whole cell lysate, Lane 5: HepG2 whole cell lysate, Lane 6: A549 whole cell lysate, Lane 7: Jurkat whole cell lysate, Lane 8: PC3 whole cell lysate and Lane 9: rat brain tissue with HSP90AA1 recombinant monoclonal antibody, clone 4B5 (Cat # RAB04364).

- Immunohistochemistry

Immunohistochemical staining of human testis tissue with HSP90AA1 recombinant monoclonal antibody, clone 4B5 (Cat # RAB04364) (diluted at 1:80).

- Immunohistochemistry

Immunohistochemical staining of human endometrial cancer with HSP90AA1 recombinant monoclonal antibody, clone 4B5 (Cat # RAB04364) (diluted at 1:80).

- Immunofluorescence

Immunofluorescent staining of NIH/3T3 cells with HSP90AA1 recombinant monoclonal antibody, clone 4B5 (Cat # RAB04364) (diluted at 1:100). The secondary antibody was Alexa Fluor 488-conjugated goat anti-rabbit IgG (green). Counter-stain DAPI was used (blue).

- Immunoprecipitation

Immunoprecipitation analysis of HeLa cell lysate with HSP90AA1 recombinant monoclonal antibody, clone 4B5 (Cat # RAB04364).
Lane 1: rabbit control IgG, Lane 2: RAB04364 precipitates and Lane 3: Input (Hela whole cell lysate).

- Enzyme-linked Immunoabsorbent Assay

Gene Info — HSP90AA1

Entrez GeneID [3320](#)

Protein Accession# [P07900](#)

Gene Name HSP90AA1

Gene Alias FLJ31884, HSP86, HSP89A, HSP90A, HSP90N, HSPC1, HSPCA, HSPCAL1, HSPCAL4, HSPN, Hsp89, Hsp90, LAP2

Gene Description heat shock protein 90kDa alpha (cytosolic), class A member 1

Omim ID [140571](#)

Gene Ontology [Hyperlink](#)

Gene Summary

HSP90 proteins are highly conserved molecular chaperones that have key roles in signal transduction, protein folding, protein degradation, and morphologic evolution. HSP90 proteins normally associate with other cochaperones and play important roles in folding newly synthesized proteins or stabilizing and refolding denatured proteins after stress. There are 2 major cytosolic HSP90 proteins, HSP90AA1, an inducible form, and HSP90AB1 (MIM 140572), a constitutive form. Other HSP90 proteins are found in endoplasmic reticulum (HSP90B1; MIM 191175) and mitochondria (TRAP1; MIM 606219) (Chen et al., 2005 [PubMed 16269234]).[supplied by OMIM]

Other Designations

heat shock 90kD protein 1, alpha|heat shock 90kD protein 1, alpha-like 4|heat shock 90kD protein, alpha-like 4|heat shock 90kDa protein 1, alpha

Pathway

- [Antigen processing and presentation](#)
- [Pathways in cancer](#)
- [Prostate cancer](#)

Disease

- [Asthma](#)
- [Cardiovascular Diseases](#)
- [Cleft Lip](#)
- [Cleft Palate](#)
- [Diabetes Mellitus](#)
- [Edema](#)