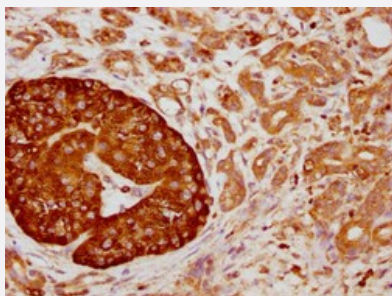


RecomAb™

# CD63 recombinant monoclonal antibody, clone 2E5

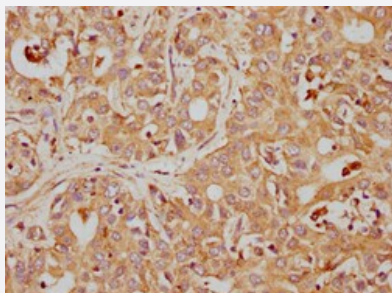
Catalog # RAB04361      Size 100 uL

## Applications



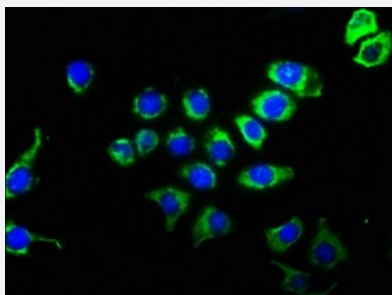
### Immunohistochemistry

Immunohistochemical staining of human pancreatic cancer with CD63 recombinant monoclonal antibody, clone 2E5 (Cat # RAB04361) (diluted at 1:155).



### Immunohistochemistry

Immunohistochemical staining of human liver cancer with CD63 recombinant monoclonal antibody, clone 2E5 (Cat # RAB04361) (diluted at 1:155).



### Immunofluorescence

Immunofluorescent staining of A549 cells with CD63 recombinant monoclonal antibody, clone 2E5 (Cat # RAB04361) (diluted at 1:51). The secondary antibody was Alexa Fluor 488-conjugated goat anti-rabbit IgG (green). Counter-stain DAPI was used (blue).

## Specification

### Product Description

Rabbit recombinant monoclonal antibody raised against human CD63.

<b>Antibody Species</b>	Rabbit
<b>Immunogen</b>	Original antibody is raised against a synthetic peptide corresponding to human CD63.
<b>Reactivity</b>	Human
<b>Form</b>	Liquid
<b>Purification</b>	Affinity chromatography
<b>Isotype</b>	IgG
<b>Recommend Usage</b>	ELISA Immunofluorescence (1:20-1:200) Immunohistochemistry (1:50-1:200) The optimal working dilution should be determined by the end user.
<b>Storage Buffer</b>	In PBS, pH7.4 (150mM NaCl, 50% glycerol and 0.02% sodium azide)
<b>Storage Instruction</b>	Store at -20 °C or -80 °C. Aliquot to avoid repeated freezing and thawing.
<b>Note</b>	This product contains sodium azide: a POISONOUS AND HAZARDOUS SUBSTANCE which should be handled by trained staff only.

## Applications

- Immunohistochemistry

Immunohistochemical staining of human pancreatic cancer with CD63 recombinant monoclonal antibody, clone 2E5 (Cat # RAB04361) (diluted at 1:155).

- Immunohistochemistry

Immunohistochemical staining of human liver cancer with CD63 recombinant monoclonal antibody, clone 2E5 (Cat # RAB04361) (diluted at 1:155).

- Immunofluorescence

Immunofluorescent staining of A549 cells with CD63 recombinant monoclonal antibody, clone 2E5 (Cat # RAB04361) (diluted at 1:51). The secondary antibody was Alexa Fluor 488-conjugated goat anti-rabbit IgG (green). Counter-stain DAPI was used (blue).

- Enzyme-linked Immunoabsorbent Assay

## Gene Info — CD63

Entrez GeneID	<a href="#">967</a>
Protein Accession#	<a href="#">P08962</a>
Gene Name	CD63
Gene Alias	LAMP-3, ME491, MLA1, OMA81H, TSPAN30
Gene Description	CD63 molecule
Omim ID	<a href="#">155740</a>
Gene Ontology	<a href="#">Hyperlink</a>
Gene Summary	<p>The protein encoded by this gene is a member of the transmembrane 4 superfamily, also known as the tetraspanin family. Most of these members are cell-surface proteins that are characterized by the presence of four hydrophobic domains. The proteins mediate signal transduction events that play a role in the regulation of cell development, activation, growth and motility. This encoded protein is a cell surface glycoprotein that is known to complex with integrins. It may function as a blood platelet activation marker. Deficiency of this protein is associated with Hermansky-Pudlak syndrome. Also this gene has been associated with tumor progression. The use of alternate polyadenylation sites has been found for this gene. Alternative splicing results in multiple transcript variants encoding different proteins. [provided by RefSeq]</p>
Other Designations	CD63 antigen CD63 antigen (melanoma 1 antigen) granulophysin lysosome-associated membrane glycoprotein 3 melanoma 1 antigen melanoma-associated antigen ME491 melanoma-associated antigen MLA1 ocular melanoma-associated antigen tetraspanin-30

## Pathway

- [Lysosome](#)