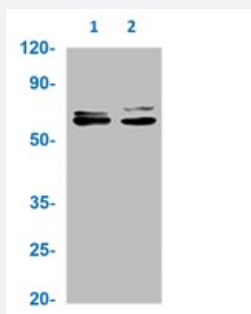


RecomAb™

# SRC recombinant monoclonal antibody, clone 21H5

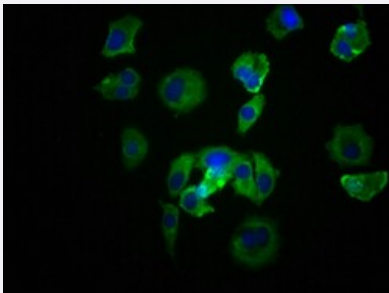
Catalog # RAB04355      Size 100 uL

## Applications



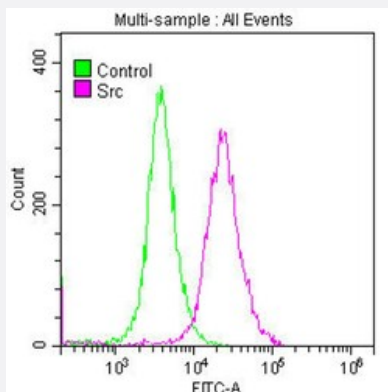
### Western Blot

Western blot analysis of Lane 1: NIH/3T3 whole cell lysate and Lane 2: MCF-7 whole cell lysate with SRC recombinant monoclonal antibody, clone 21H5 (Cat # RAB04355).



### Immunofluorescence

Immunofluorescent staining of MCF-7 cells with SRC recombinant monoclonal antibody, clone 21H5 (Cat # RAB04355) (diluted at 1:39). The secondary antibody was Alexa Fluor 488-conjugated goat anti-rabbit IgG (green). Counter-stain DAPI was used (blue).



### Flow Cytometry

Flow cytometric analysis of SH-SY5Y cells with SRC recombinant monoclonal antibody, clone 21H5 (Cat # RAB04355) (diluted at 1:50; purple line) and negative control (green line).

## Specification

<b>Product Description</b>	Rabbit recombinant monoclonal antibody raised against human SRC.
<b>Antibody Species</b>	Rabbit
<b>Immunogen</b>	Original antibody is raised against a synthetic peptide corresponding to human SRC.
<b>Theoretical MW (kDa)</b>	Calculated MW: 60, 6
<b>Reactivity</b>	Human, Mouse
<b>Form</b>	Liquid
<b>Purification</b>	Affinity chromatography
<b>Isotype</b>	IgG
<b>Recommend Usage</b>	ELISA Flow Cytometry Immunofluorescence (1:20-1:200) Western Blot (1:500-1:5000) The optimal working dilution should be determined by the end user.
<b>Storage Buffer</b>	In PBS, pH7.4 (150mM NaCl, 50% glycerol and 0.02% sodium azide)
<b>Storage Instruction</b>	Store at -20 °C or -80 °C. Aliquot to avoid repeated freezing and thawing.
<b>Note</b>	This product contains sodium azide: a POISONOUS AND HAZARDOUS SUBSTANCE which should be handled by trained staff only.

## Applications

- Western Blot

Western blot analysis of Lane 1: NIH/3T3 whole cell lysate and Lane 2: MCF-7 whole cell lysate with SRC recombinant monoclonal antibody, clone 21H5 (Cat # RAB04355).

- Immunofluorescence

Immunofluorescent staining of MCF-7 cells with SRC recombinant monoclonal antibody, clone 21H5 (Cat # RAB04355) (diluted at 1:39). The secondary antibody was Alexa Fluor 488-conjugated goat anti-rabbit IgG (green). Counter-stain DAPI was used (blue).

- Enzyme-linked Immunoabsorbent Assay

- Flow Cytometry

Flow cytometric analysis of SH-SY5Y cells with SRC recombinant monoclonal antibody, clone 21H5 (Cat # RAB04355) (diluted at 1:50; purple line) and negative control (green line).

## Gene Info — SRC

Entrez GeneID	<a href="#">6714</a>
Protein Accession#	<a href="#">P12931</a>
Gene Name	SRC
Gene Alias	ASV, SRC1, c-SRC, p60-Src
Gene Description	v-src sarcoma (Schmidt-Ruppin A-2) viral oncogene homolog (avian)
Omim ID	<a href="#">190090</a>
Gene Ontology	<a href="#">Hyperlink</a>
Gene Summary	This gene is highly similar to the v-src gene of Rous sarcoma virus. This proto-oncogene may play a role in the regulation of embryonic development and cell growth. The protein encoded by this gene is a tyrosine-protein kinase whose activity can be inhibited by phosphorylation by c-SRC kinase. Mutations in this gene could be involved in the malignant progression of colon cancer. Two transcript variants encoding the same protein have been found for this gene. [provided by RefSeq]
Other Designations	OTTHUMP00000174476 OTTHUMP00000174477 proto-oncogene tyrosine-protein kinase SRC protooncogene SRC, Rous sarcoma tyrosine kinase pp60c-src tyrosine-protein kinase SRC-1

## Pathway

- [Adherens junction](#)
- [Endocytosis](#)
- [Epithelial cell signaling in Helicobacter pylori infection](#)
- [ErbB signaling pathway](#)
- [Focal adhesion](#)
- [Gap junction](#)
- [GnRH signaling pathway](#)
- [Tight junction](#)
- [VEGF signaling pathway](#)

## Disease

- [Genetic Predisposition to Disease](#)
- [HIV Infections](#)
- [Thyroid Neoplasms](#)