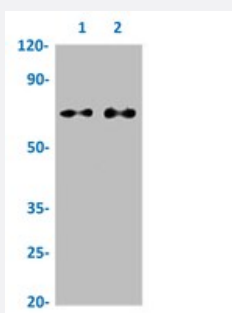


RecomAb™

# ATF2 recombinant monoclonal antibody, clone 3D12

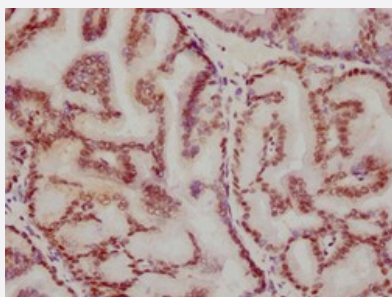
Catalog # RAB04352      Size 100 uL

## Applications



### Western Blot

Western blot analysis of Lane 1: K562 whole cell lysate and Lane 2: 293T whole cell lysate with ATF2 recombinant monoclonal antibody, clone 3D12 (Cat # RAB04352).



### Immunohistochemistry

Immunohistochemical staining of human prostate tissue with ATF2 recombinant monoclonal antibody, clone 3D12 (Cat # RAB04352) (diluted at 1:115.5).

## Specification

<b>Product Description</b>	Rabbit recombinant monoclonal antibody raised against human ATF2.
<b>Antibody Species</b>	Rabbit
<b>Immunogen</b>	Original antibody is raised against a synthetic peptide corresponding to human ATF2.
<b>Theoretical MW (kDa)</b>	Calculated MW: 55, 3
<b>Reactivity</b>	Human
<b>Form</b>	Liquid

Purification	Affinity chromatography
Isotype	IgG
Recommend Usage	ELISA Immunohistochemistry (1:50-1:200) Western Blot (1:500-1:5000) The optimal working dilution should be determined by the end user.
Storage Buffer	In PBS, pH7.4 (150mM NaCl, 50% glycerol and 0.02% sodium azide)
Storage Instruction	Store at -20 °C or -80 °C. Aliquot to avoid repeated freezing and thawing.
Note	This product contains sodium azide: a POISONOUS AND HAZARDOUS SUBSTANCE which should be handled by trained staff only.

## Applications

- Western Blot

Western blot analysis of Lane 1: K562 whole cell lysate and Lane 2: 293T whole cell lysate with ATF2 recombinant monoclonal antibody, clone 3D12 (Cat # RAB04352).

- Immunohistochemistry

Immunohistochemical staining of human prostate tissue with ATF2 recombinant monoclonal antibody, clone 3D12 (Cat # RAB04352) (diluted at 1:115.5).

- Enzyme-linked Immunoabsorbent Assay

## Gene Info — ATF2

Entrez GeneID	<a href="#">1386</a>
Protein Accession#	<a href="#">P15336</a>
Gene Name	ATF2
Gene Alias	CRE-BP1, CREB2, HB16, MGC111558, TREB7
Gene Description	activating transcription factor 2
Omim ID	<a href="#">123811</a>
Gene Ontology	<a href="#">Hyperlink</a>

**Gene Summary**

This gene encodes a transcription factor that is a member of the leucine zipper family of DNA binding proteins. This protein binds to the cAMP-responsive element (CRE), an octameric palindrome. The protein forms a homodimer or heterodimer with c-Jun and stimulates CRE-dependent transcription. The protein is also a histone acetyltransferase (HAT) that specifically acetylates histones H2B and H4 in vitro; thus it may represent a class of sequence-specific factors that activate transcription by direct effects on chromatin components. Additional transcript variants have been identified but their biological validity has not been determined. [provided by RefSeq]

**Other Designations**

OTTHUMP00000163262|activating transcription factor 2 splice variant ATF2-var2|cAMP responsive element binding protein 2, formerly

**Pathway**

- [MAPK signaling pathway](#)

**Disease**

- [Bipolar Disorder](#)
- [Cardiovascular Diseases](#)
- [Diabetes Mellitus](#)
- [Edema](#)
- [Genetic Predisposition to Disease](#)
- [Schizophrenia](#)
- [Tobacco Use Disorder](#)