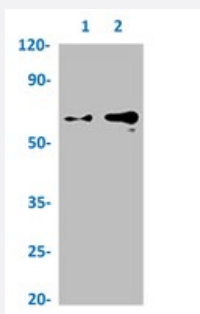


RecomAb™

# GPC3 recombinant monoclonal antibody, clone 4H11

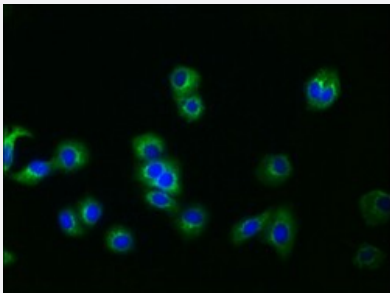
Catalog # RAB04332      Size 100 uL

## Applications



### Western Blot

Western blot analysis of Lane 1: 293 whole cell lysate and Lane 2: K562 whole cell lysate with GPC3 recombinant monoclonal antibody, clone 4H11 (Cat # RAB04332).



### Immunofluorescence

Immunofluorescent staining of HepG2 cells with GPC3 recombinant monoclonal antibody, clone 4H11 (Cat # RAB04332) (diluted at 1:30). The secondary antibody was Alexa Fluor 488-conjugated goat anti-rabbit IgG (green). Counter-stain DAPI was used (blue).

## Specification

<b>Product Description</b>	Rabbit recombinant monoclonal antibody raised against human GPC3.
<b>Antibody Species</b>	Rabbit
<b>Immunogen</b>	Original antibody is raised against a synthetic peptide corresponding to human GPC3.
<b>Theoretical MW (kDa)</b>	Calculated MW: 66, 6
<b>Reactivity</b>	Human
<b>Form</b>	Liquid

Purification	Affinity chromatography
Isotype	IgG
Recommend Usage	ELISA Immunofluorescence (1:20-1:200) Western Blot (1:500-1:5000) The optimal working dilution should be determined by the end user.
Storage Buffer	In PBS, pH7.4 (150mM NaCl, 50% glycerol and 0.02% sodium azide)
Storage Instruction	Store at -20 °C or -80 °C. Aliquot to avoid repeated freezing and thawing.
Note	This product contains sodium azide: a POISONOUS AND HAZARDOUS SUBSTANCE which should be handled by trained staff only.

## Applications

- Western Blot

Western blot analysis of Lane 1: 293 whole cell lysate and Lane 2: K562 whole cell lysate with GPC3 recombinant monoclonal antibody, clone 4H11 (Cat # RAB04332).

- Immunofluorescence

Immunofluorescent staining of HepG2 cells with GPC3 recombinant monoclonal antibody, clone 4H11 (Cat # RAB04332) (diluted at 1:30). The secondary antibody was Alexa Fluor 488-conjugated goat anti-rabbit IgG (green). Counter-stain DAPI was used (blue).

- Enzyme-linked Immunoabsorbent Assay

## Gene Info — GPC3

Entrez GeneID	<a href="#">2719</a>
Protein Accession#	<a href="#">P51654</a>
Gene Name	GPC3
Gene Alias	DGSX, OCI-5, SDYS, SGB, SGBS, SGBS1
Gene Description	glypican 3
Omim ID	<a href="#">194070</a> <a href="#">300037</a> <a href="#">312870</a>
Gene Ontology	<a href="#">Hyperlink</a>

**Gene Summary**

Cell surface heparan sulfate proteoglycans are composed of a membrane-associated protein core substituted with a variable number of heparan sulfate chains. Members of the glypican-related integral membrane proteoglycan family (GRIPS) contain a core protein anchored to the cytoplasmic membrane via a glycosyl phosphatidylinositol linkage. These proteins may play a role in the control of cell division and growth regulation. The protein encoded by this gene can bind to and inhibit the dipeptidyl peptidase activity of CD26, and it can induce apoptosis in certain cell types. Deletion mutations in this gene are associated with Simpson-Golabi-Behmel syndrome, also known as Simpson dysmorphia syndrome. Alternative splicing results in multiple transcript variants. [provided by RefSeq]

**Other Designations**

OTTHUMP00000024058|OTTHUMP00000062492|glypican proteoglycan 3