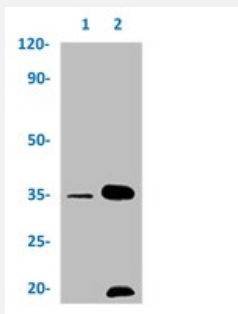


RecomAb™

CNN1 recombinant monoclonal antibody, clone 2H1

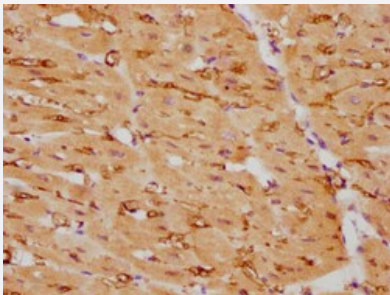
Catalog # RAB04330 Size 100 uL

Applications



Western Blot

Western blot analysis of Lane 1: 293 whole cell lysate and Lane 2: mouse lung tissue with CNN1 recombinant monoclonal antibody, clone 2H1 (Cat # RAB04330).



Immunohistochemistry

Immunohistochemical staining of human heart tissue with CNN1 recombinant monoclonal antibody, clone 2H1 (Cat # RAB04330) (diluted at 1:105).

Specification

Product Description	Rabbit recombinant monoclonal antibody raised against human CNN1.
Antibody Species	Rabbit
Immunogen	Original antibody is raised against a synthetic peptide corresponding to human CNN1.
Theoretical MW (kDa)	Calculated MW: 34, 3
Reactivity	Human, Mouse
Form	Liquid

Purification	Affinity chromatography
Isotype	IgG
Recommend Usage	ELISA Immunohistochemistry (1:50-1:200) Western Blot (1:500-1:5000) The optimal working dilution should be determined by the end user.
Storage Buffer	In PBS, pH7.4 (150mM NaCl, 50% glycerol and 0.02% sodium azide)
Storage Instruction	Store at -20 °C or -80 °C. Aliquot to avoid repeated freezing and thawing.
Note	This product contains sodium azide: a POISONOUS AND HAZARDOUS SUBSTANCE which should be handled by trained staff only.

Applications

- Western Blot

Western blot analysis of Lane 1: 293 whole cell lysate and Lane 2: mouse lung tissue with CNN1 recombinant monoclonal antibody, clone 2H1 (Cat # RAB04330).

- Immunohistochemistry

Immunohistochemical staining of human heart tissue with CNN1 recombinant monoclonal antibody, clone 2H1 (Cat # RAB04330) (diluted at 1:105).

- Enzyme-linked Immunoabsorbent Assay

Gene Info — CNN1

Entrez GeneID	1264
Protein Accession#	P51911
Gene Name	CNN1
Gene Alias	SMCC, Sm-Calp
Gene Description	calponin 1, basic, smooth muscle
Omim ID	600806
Gene Ontology	Hyperlink

Gene Summary

basic

Other Designations

calponins, basic

Disease

- [Cardiovascular Diseases](#)
- [Diabetes Mellitus](#)
- [Edema](#)