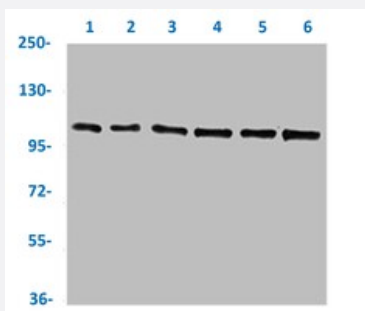


RecomAb™

# CDC5L recombinant monoclonal antibody, clone 1E3

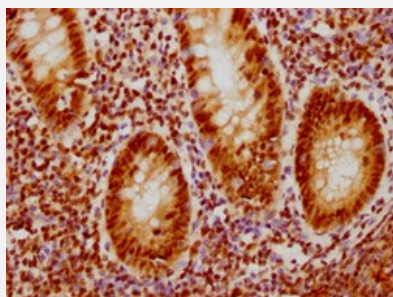
Catalog # RAB04314      Size 100 uL

## Applications



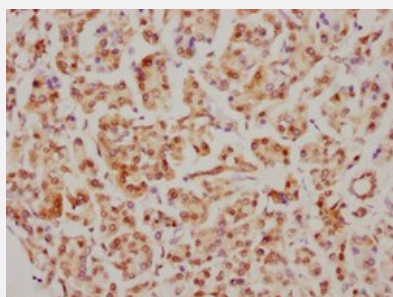
### Western Blot

Western blot analysis of Lane 1: Hela whole cell lysate, Lane 2: MCF-7 whole cell lysate, Lane 3: HepG2 whole cell lysate, Lane 4: 293 whole cell lysate, Lane 5: K562 whole cell lysate and Lane 6: Jurkat whole cell lysate with CDC5L recombinant monoclonal antibody, clone 1E3 (Cat # RAB04314).



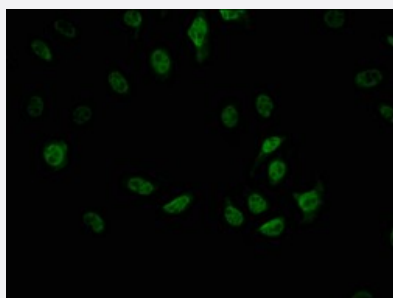
### Immunohistochemistry

Immunohistochemical staining of human appendix tissue with CDC5L recombinant monoclonal antibody, clone 1E3 (Cat # RAB04314) (diluted at 1:126.5)



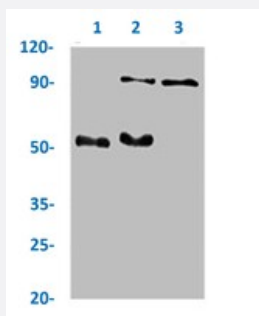
### Immunohistochemistry

Immunohistochemical staining of human pancreatic tissue with CDC5L recombinant monoclonal antibody, clone 1E3 (Cat # RAB04314) (diluted at 1:126.5).



### Immunofluorescence

Immunofluorescent staining of A549 cells with CDC5L recombinant monoclonal antibody, clone 1E3 (Cat # RAB04314) (diluted at 1:42). The secondary antibody was Alexa Fluor 488-conjugated goat anti-rabbit IgG (green). Counter-stain DAPI was used (blue).



## Immunoprecipitation

Immunoprecipitation analysis of HeLa cell lysate with CDC5L recombinant monoclonal antibody, clone 1E3 (Cat # RAB04314).

Lane 1: rabbit control IgG, Lane 2: RAB04314 precipitates and Lane 3: Input (Hela whole cell lysates).

## Specification

<b>Product Description</b>	Rabbit recombinant monoclonal antibody raised against human CDC5L.
<b>Antibody Species</b>	Rabbit
<b>Immunogen</b>	Original antibody is raised against a synthetic peptide corresponding to human CDC5L.
<b>Theoretical MW (kDa)</b>	Calculated MW: 93 kD
<b>Reactivity</b>	Human
<b>Form</b>	Liquid
<b>Purification</b>	Affinity chromatography
<b>Isotype</b>	IgG
<b>Recommend Usage</b>	ELISA Immunofluorescence (1:20-1:200) Immunohistochemistry (1:50-1:200) Immunoprecipitation (1:200-1:1000) Western Blot (1:500-1:5000) The optimal working dilution should be determined by the end user.
<b>Storage Buffer</b>	In PBS, 150 mM NaCl, pH 7.4 (50% glycerol, 0.02% sodium azide)
<b>Storage Instruction</b>	Store at -20 °C or -80 °C. Aliquot to avoid repeated freezing and thawing.
<b>Note</b>	This product contains sodium azide: a POISONOUS AND HAZARDOUS SUBSTANCE which should be handled by trained staff only.

## Applications

- Western Blot

Western blot analysis of Lane 1: HeLa whole cell lysate, Lane 2: MCF-7 whole cell lysate, Lane 3: HepG2 whole cell lysate, Lane 4: 293 whole cell lysate, Lane 5: K562 whole cell lysate and Lane 6: Jurkat whole cell lysate with CDC5L recombinant monoclonal antibody, clone 1E3 (Cat # RAB04314).

- Immunohistochemistry

Immunohistochemical staining of human appendix tissue with CDC5L recombinant monoclonal antibody, clone 1E3 (Cat # RAB04314) (diluted at 1:126.5)

- Immunohistochemistry

Immunohistochemical staining of human pancreatic tissue with CDC5L recombinant monoclonal antibody, clone 1E3 (Cat # RAB04314) (diluted at 1:126.5).

- Immunofluorescence

Immunofluorescent staining of A549 cells with CDC5L recombinant monoclonal antibody, clone 1E3 (Cat # RAB04314) (diluted at 1:42). The secondary antibody was Alexa Fluor 488-conjugated goat anti-rabbit IgG (green). Counter-stain DAPI was used (blue).

- Immunoprecipitation

Immunoprecipitation analysis of HeLa cell lysate with CDC5L recombinant monoclonal antibody, clone 1E3 (Cat # RAB04314). Lane 1: rabbit control IgG, Lane 2: RAB04314 precipitates and Lane 3: Input (HeLa whole cell lysates).

- Enzyme-linked Immunoabsorbent Assay

## Gene Info — CDC5L

Entrez GeneID	<a href="#">988</a>
---------------	---------------------

Protein Accession#	<a href="#">Q99459</a>
--------------------	------------------------

Gene Name	CDC5L
-----------	-------

Gene Alias	CEF1, KIAA0432, PCDC5RP, dJ319D22.1, hCDC5
------------	--

Gene Description	CDC5 cell division cycle 5-like (S. pombe)
------------------	--

Omim ID	<a href="#">602868</a>
---------	------------------------

Gene Ontology	<a href="#">Hyperlink</a>
---------------	---------------------------

**Gene Summary**

The protein encoded by this gene shares a significant similarity with Schizosaccharomyces pombe cdc5 gene product, which is a cell cycle regulator important for G2/M transition. This protein has been demonstrated to act as a positive regulator of cell cycle G2/M progression. It was also found to be an essential component of a non-snRNA spliceosome, which contains at least five additional protein factors and is required for the second catalytic step of pre-mRNA splicing. [provided by RefSeq]

**Other Designations**

CDC5 (cell division cycle 5, S. pombe, homolog)-like|CDC5-like|Cdc5-related protein|Cell division cycle 5, S. pombe, homolog-like|OTTHUMP00000016529|dJ319D22.1 (CDC5-like protein)

**Disease**

- [Celiac Disease](#)
- [Genetic Predisposition to Disease](#)