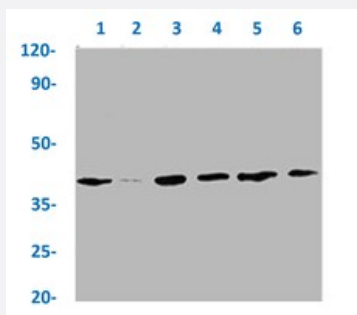


RecomAb™

# LAT (phospho Y191) recombinant monoclonal antibody, clone 2E4

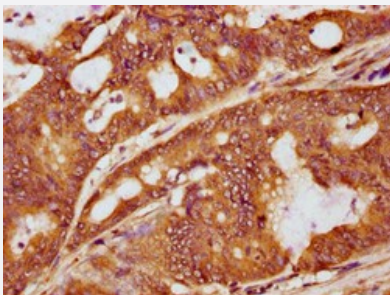
Catalog # RAB04296      Size 100 uL

## Applications



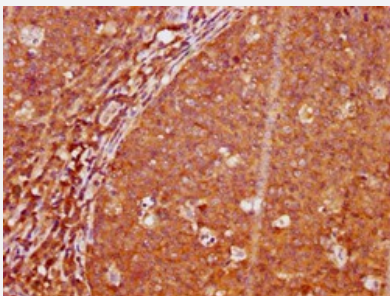
### Western Blot

Western blot analysis of Lane 1: Jurkat whole cell lysate (treated with EGF 100ng/ml/20mins), Lane 2: Jurkat whole cell lysate (not treated), Lane 3: Hela whole cell lysate (treated with Pervanadate), Lane 4: Hela whole cell lysate (not treated), Lane 5: HepG2 whole cell lysate (treated with EGF 100ng/ml/20mins) and Lane 6: HepG2 whole cell lysate (not treated) with LAT (phospho Y191) recombinant monoclonal antibody, clone 2E4 (Cat # RAB04296).



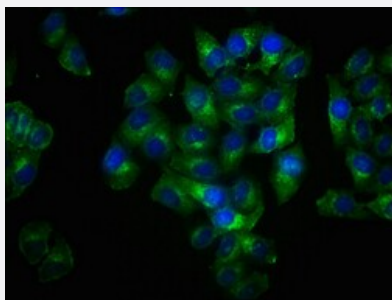
### Immunohistochemistry

Immunohistochemical staining of human colon cancer with LAT (phospho Y191) recombinant monoclonal antibody, clone 2E4 (Cat # RAB04296) (diluted at 1:100)



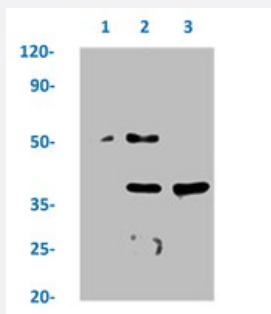
### Immunohistochemistry

Immunohistochemical staining of human tonsil tissue with LAT (phospho Y191) recombinant monoclonal antibody, clone 2E4 (Cat # RAB04296) (diluted at 1:100).



## Immunofluorescence

Immunofluorescent staining of HeLa cells with LAT (phospho Y191) recombinant monoclonal antibody, clone 2E4 (Cat # RAB04296) (diluted at 1:100). The secondary antibody was Alexa Fluor 488-conjugated goat anti-rabbit IgG (green). Counter-stain DAPI was used (blue).



## Immunoprecipitation

Immunoprecipitation analysis of A549 cell lysate with LAT (phospho Y191) recombinant monoclonal antibody, clone 2E4 (Cat # RAB04296).

Lane 1: rabbit control IgG, Lane 2: RAB04296 precipitates and Lane 3: Input (A549 whole cell lysates).

## Specification

<b>Product Description</b>	Rabbit recombinant monoclonal antibody raised against human LAT.
<b>Antibody Species</b>	Rabbit
<b>Immunogen</b>	Original antibody is raised against a synthetic phosphopeptide corresponding to residues surrounding Y191 of human LAT.
<b>Theoretical MW (kDa)</b>	Calculated MW: 38 kD
<b>Reactivity</b>	Human
<b>Form</b>	Liquid
<b>Purification</b>	Affinity chromatography
<b>Isotype</b>	IgG
<b>Recommend Usage</b>	ELISA Immunofluorescence (1:20-1:200) Immunohistochemistry (1:50-1:200) Immunoprecipitation (1:200-1:1000) Western Blot (1:500-1:5000) The optimal working dilution should be determined by the end user.
<b>Storage Buffer</b>	In PBS, 150 mM NaCl, pH 7.4 (50% glycerol, 0.02% sodium azide)

**Storage Instruction**

Store at -20 °C or -80 °C.  
Aliquot to avoid repeated freezing and thawing.

**Note**

This product contains sodium azide: a POISONOUS AND HAZARDOUS SUBSTANCE which should be handled by trained staff only.

## Applications

- Western Blot

Western blot analysis of Lane 1: Jurkat whole cell lysate (treated with EGF 100ng/ml/20mins), Lane 2: Jurkat whole cell lysate (not treated), Lane 3: Hela whole cell lysate (treated with Pervanadate), Lane 4: Hela whole cell lysate (not treated), Lane 5: HepG2 whole cell lysate (treated with EGF 100ng/ml/20mins) and Lane 6: HepG2 whole cell lysate (not treated) with LAT (phospho Y191) recombinant monoclonal antibody, clone 2E4 (Cat # RAB04296).

- Immunohistochemistry

Immunohistochemical staining of human colon cancer with LAT (phospho Y191) recombinant monoclonal antibody, clone 2E4 (Cat # RAB04296) (diluted at 1:100)

- Immunohistochemistry

Immunohistochemical staining of human tonsil tissue with LAT (phospho Y191) recombinant monoclonal antibody, clone 2E4 (Cat # RAB04296) (diluted at 1:100).

- Immunofluorescence

Immunofluorescent staining of Hela cells with LAT (phospho Y191) recombinant monoclonal antibody, clone 2E4 (Cat # RAB04296) (diluted at 1:100). The secondary antibody was Alexa Fluor 488-conjugated goat anti-rabbit IgG (green). Counter-stain DAPI was used (blue).

- Immunoprecipitation

Immunoprecipitation analysis of A549 cell lysate with LAT (phospho Y191) recombinant monoclonal antibody, clone 2E4 (Cat # RAB04296).  
Lane 1: rabbit control IgG, Lane 2: RAB04296 precipitates and Lane 3: Input (A549 whole cell lysates).

- Enzyme-linked Immunoabsorbent Assay

## Gene Info — LAT

**Entrez GeneID**[27040](#)**Protein Accession#**[O43561](#)**Gene Name**

LAT

Gene Alias	LAT1, pp36
Gene Description	linker for activation of T cells
Omim ID	<a href="#">602354</a>
Gene Ontology	<a href="#">Hyperlink</a>
Gene Summary	<p>The protein encoded by this gene is phosphorylated by ZAP-70/Syk protein tyrosine kinases following activation of the T-cell antigen receptor (TCR) signal transduction pathway. This transmembrane protein localizes to lipid rafts and acts as a docking site for SH2 domain-containing proteins. Upon phosphorylation, this protein recruits multiple adaptor proteins and downstream signaling molecules into multimolecular signaling complexes located near the site of TCR engagement. Alternative splicing results in multiple transcript variants encoding different isoforms. [provided by RefSeq]</p>
Other Designations	36 kDa phospho-tyrosine adaptor protein

## Pathway

- [Fc epsilon RI signaling pathway](#)
- [Fc gamma R-mediated phagocytosis](#)
- [Natural killer cell mediated cytotoxicity](#)
- [T cell receptor signaling pathway](#)