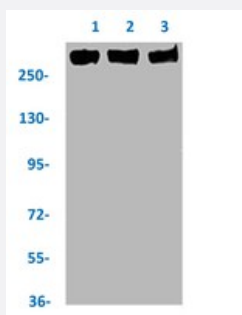


RecomAb™

POLR2A (phospho S5) recombinant monoclonal antibody, clone 2H4

Catalog # RAB04286 Size 100 uL

Applications

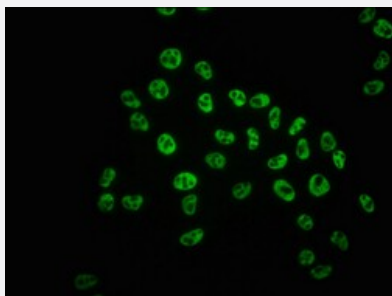


Western Blot

Western blot analysis of Lane 1: HeLa whole cell lysate, Lane 2: A549 whole cell lysate and Lane 3: 293 whole cell lysate with POLR2A (phospho S5) recombinant monoclonal antibody, clone 2H4 (Cat # RAB04286).

Immunocytochemistry

Immunocytochemical staining of HeLa cells with POLR2A (phospho S5) recombinant monoclonal antibody, clone 2H4 (Cat # RAB04286) (diluted at 1:75).



Immunofluorescence

Immunofluorescent staining of HeLa cells with POLR2A (phospho S5) recombinant monoclonal antibody, clone 2H4 (Cat # RAB04286) (diluted at 1:100). The secondary antibody was Alexa Fluor 488-conjugated goat anti-rabbit IgG (green). Counter-stain DAPI was used (blue).

Specification

Product Description	Rabbit recombinant monoclonal antibody raised against human POLR2A.
Antibody Species	Rabbit
Immunogen	Original antibody is raised against a synthetic phosphopeptide corresponding to residues surrounding S5 of human POLR2A.
Theoretical MW (kDa)	Calculated MW: 270 k
Reactivity	Human
Form	Liquid
Purification	Affinity chromatography
Isotype	IgG
Recommend Usage	ELISA Immunocytochemistry Immunofluorescence(1:20-1:200) Immunohistochemistry(1:50-1:200) Western Blot(1:500-1:5000) The optimal working dilution should be determined by the end user.
Storage Buffer	In PBS, 150 mM NaCl, pH 7.4 (50% glycerol, 0.02% sodium azide)
Storage Instruction	Store at -20 °C or -80 °C. Aliquot to avoid repeated freezing and thawing.
Note	This product contains sodium azide: a POISONOUS AND HAZARDOUS SUBSTANCE which should be handled by trained staff only.

Applications

- Western Blot

Western blot analysis of Lane 1:HeLa whole cell lysate, Lane 2: A549 whole cell lysate and Lane 3: 293 whole cell lysate withPOLR2A (phospho S5) recombinant monoclonal antibody, clone 2H4 (Cat # RAB04286).

- Immunohistochemistry

- Immunocytochemistry

Immunocytochemical staining of HeLa cells with POLR2A (phospho S5) recombinant monoclonal antibody, clone 2H4 (Cat # RAB04286) (diluted at 1:75).

- Immunofluorescence

Immunofluorescent staining of HeLa cells with POLR2A (phospho S5) recombinant monoclonal antibody, clone 2H4 (Cat # RAB04286) (diluted at 1:100). The secondary antibody was Alexa Fluor 488-conjugated goat anti-rabbit IgG (green). Counter-stain DAPI was used (blue).

- Enzyme-linked Immunoabsorbent Assay

Gene Info — POLR2A

Entrez GeneID	5430
Protein Accession#	P24928
Gene Name	POLR2A
Gene Alias	MGC75453, POLR2, POLRA, RPB1, RPBh1, RPO2, RPOL2, RpIIIS, hRPB220, hsRPB1
Gene Description	polymerase (RNA) II (DNA directed) polypeptide A, 220kDa
Omim ID	180660
Gene Ontology	Hyperlink
Gene Summary	This gene encodes the largest subunit of RNA polymerase II, the polymerase responsible for synthesizing messenger RNA in eukaryotes. The product of this gene contains a carboxy terminal domain composed of heptapeptide repeats that are essential for polymerase activity. These repeats contain serine and threonine residues that are phosphorylated in actively transcribing RNA polymerase. In addition, this subunit, in combination with several other polymerase subunits, forms the DNA binding domain of the polymerase, a groove in which the DNA template is transcribed into RNA. [provided by RefSeq]
Other Designations	DNA directed RNA polymerase II polypeptide A DNA-directed RNA polymerase II largest subunit, RNA polymerase II 220 kd subunit polymerase (RNA) II (DNA directed) polypeptide A (220kD)

Pathway

- [Metabolic pathways](#)
- [Purine metabolism](#)
- [Pyrimidine metabolism](#)
- [RNA polymerase](#)

Disease

- [Cardiovascular Diseases](#)
- [Diabetes Mellitus](#)
- [Edema](#)
- [Urinary Bladder Neoplasms](#)