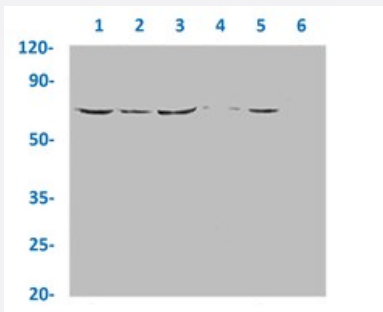


RecomAb™

PXN (phospho Y118) recombinant monoclonal antibody, clone 1F11

Catalog # RAB04279 Size 100 uL

Applications



Western Blot

Western blot analysis of Lane 1: Hela whole cell lysate (treated with EGF 100ng/ml/20mins), Lane 2: Hela whole cell lysate (not treated), Lane 3: A549 whole cell lysate (treated with Calyculin A 100nM/60 mins), Lane 4: A549 whole cell lysate (not treated), Lane 5: HepG2 whole cell lysate (treated with EGF 100ng/ml/20mins) and Lane 6: HepG2 whole cell lysate (not treated) with PXN (phospho Y118) recombinant monoclonal antibody, clone 1F11 (Cat # RAB04279).

Specification

Product Description	Rabbit recombinant monoclonal antibody raised against human PXN.
Antibody Species	Rabbit
Immunogen	Original antibody is raised against a synthetic phosphopeptide corresponding to residues surrounding Y118 of human PXN.
Theoretical MW (kDa)	Calculated MW: 68 kD
Reactivity	Human
Form	Liquid
Purification	Affinity chromatography
Isotype	IgG

Recommend Usage	ELISA Western Blot (1:500-1:5000) The optimal working dilution should be determined by the end user.
Storage Buffer	In PBS, 150 mM NaCl, pH 7.4 (50% glycerol, 0.02% sodium azide)
Storage Instruction	Store at -20 °C or -80 °C. Aliquot to avoid repeated freezing and thawing.
Note	This product contains sodium azide: a POISONOUS AND HAZARDOUS SUBSTANCE which should be handled by trained staff only.

Applications

- Western Blot

Western blot analysis of Lane 1: Hela whole cell lysate (treated with EGF 100ng/ml/20mins), Lane 2: Hela whole cell lysate (not treated), Lane 3: A549 whole cell lysate (treated with Calyculin A 100nM/60 mins), Lane 4: A549 whole cell lysate (not treated), Lane 5: HepG2 whole cell lysate (treated with EGF 100ng/ml/20mins) and Lane 6: HepG2 whole cell lysate (not treated) with PXN (phospho Y118) recombinant monoclonal antibody, clone 1F11 (Cat # RAB04279).

- Enzyme-linked Immunoabsorbent Assay

Gene Info — PXN

Entrez GeneID	5829
Protein Accession#	P49023
Gene Name	PXN
Gene Alias	FLJ16691
Gene Description	paxillin
Omim ID	602505
Gene Ontology	Hyperlink
Other Designations	-

Pathway

- [Chemokine signaling pathway](#)

- [Focal adhesion](#)
- [Leukocyte transendothelial migration](#)
- [Regulation of actin cytoskeleton](#)
- [VEGF signaling pathway](#)

Disease

- [Carcinoma](#)
- [Lung Neoplasms](#)