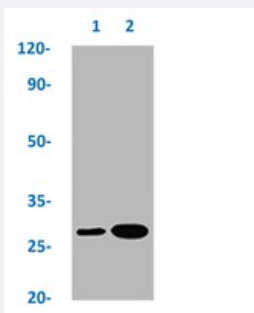


RecomAb™

HSPB1 (phospho S78) recombinant monoclonal antibody, clone 2D8

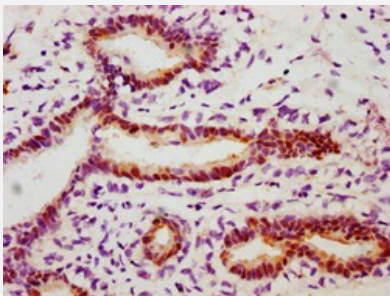
Catalog # RAB04275 Size 100 uL

Applications



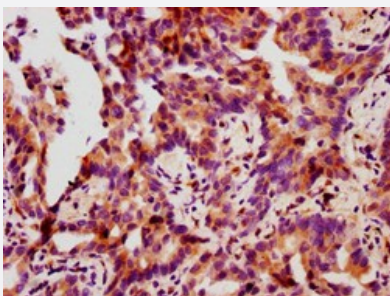
Western Blot

Western blot analysis of Lane 1: A549 whole cell lysate (not treated) and Lane 2: A549 whole cell lysate (treated with EGF 100ng/ml/20mins) with HSPB1 (phospho S78) recombinant monoclonal antibody, clone 2D8 (Cat # RAB04275).



Immunohistochemistry

Immunohistochemical staining of human breast carcinoma with HSPB1 (phospho S78) recombinant monoclonal antibody, clone 2D8 (Cat # RAB04275) (diluted at 1:100).



Immunohistochemistry

Immunohistochemical staining of human lung cancer with HSPB1 (phospho S78) recombinant monoclonal antibody, clone 2D8 (Cat # RAB04275) (diluted at 1:100).

Specification

Product Description	Rabbit recombinant monoclonal antibody raised against human HSPB1.
Antibody Species	Rabbit
Immunogen	Original antibody is raised against a synthetic phosphopeptide corresponding to residues surrounding S78 of human HSPB1.
Theoretical MW (kDa)	Calculated MW: 27 kD
Reactivity	Human
Form	Liquid
Purification	Affinity chromatography
Isotype	IgG
Recommend Usage	ELISA Immunohistochemistry (1:50-1:200) Western Blot (1:500-1:5000) The optimal working dilution should be determined by the end user.
Storage Buffer	In PBS, 150 mM NaCl, pH 7.4 (50% glycerol, 0.02% sodium azide)
Storage Instruction	Store at -20 °C or -80 °C. Aliquot to avoid repeated freezing and thawing.
Note	This product contains sodium azide: a POISONOUS AND HAZARDOUS SUBSTANCE which should be handled by trained staff only.

Applications

- Western Blot

Western blot analysis of Lane 1: A549 whole cell lysate (not treated) and Lane 2: A549 whole cell lysate (treated with EGF 100ng/ml/20mins) with HSPB1 (phospho S78) recombinant monoclonal antibody, clone 2D8 (Cat # RAB04275).

- Immunohistochemistry

Immunohistochemical staining of human breast carcinoma with HSPB1 (phospho S78) recombinant monoclonal antibody, clone 2D8 (Cat # RAB04275) (diluted at 1:100).

- Immunohistochemistry

Immunohistochemical staining of human lung cancer with HSPB1 (phospho S78) recombinant monoclonal antibody, clone 2D8 (Cat # RAB04275) (diluted at 1:100)

- Enzyme-linked Immunoabsorbent Assay

Gene Info — HSPB1

Entrez GeneID	3315
Protein Accession#	P04792
Gene Name	HSPB1
Gene Alias	CMT2F, DKFZp586P1322, HMN2B, HS.76067, HSP27, HSP28, Hsp25, SRP27
Gene Description	heat shock 27kDa protein 1
Omim ID	602195 606595 608634
Gene Ontology	Hyperlink
Gene Summary	The protein encoded by this gene is induced by environmental stress and developmental changes . The encoded protein is involved in stress resistance and actin organization and translocates from the cytoplasm to the nucleus upon stress induction. Defects in this gene are a cause of Charcot-Marie-Tooth disease type 2F (CMT2F) and distal hereditary motor neuropathy (dHMN). [provided by RefSeq]
Other Designations	OTTHUMP00000024846 estrogen-regulated 24 kDa protein heat shock 27kD protein 1 heat shock protein beta-1 stress-responsive protein 27

Pathway

- [MAPK signaling pathway](#)
- [VEGF signaling pathway](#)

Disease

- [Adenocarcinoma](#)
- [Carcinoma](#)
- [Charcot-Marie-Tooth Disease](#)
- [Diabetic Nephropathies](#)
- [Genetic Predisposition to Disease](#)
- [Lung Neoplasms](#)
- [Small Cell Lung Carcinoma](#)