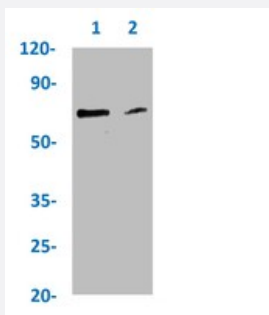


RecomAb™

YAP1 (phospho S127) recombinant monoclonal antibody, clone 3F3

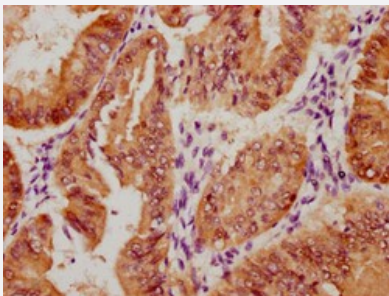
Catalog # RAB04258 Size 100 uL

Applications



Western Blot

Western blot analysis of Lane 1: HepG2 whole cell lysate (treated with Calyculin A 100 nM/60 mins) and Lane 2: HepG2 whole cell lysate (not treated) with YAP1 (phospho S127) recombinant monoclonal antibody, clone 3F3 (Cat # RAB04258).



Immunohistochemistry

Immunohistochemical staining of human endometrial cancer with YAP1 (phospho S127) recombinant monoclonal antibody, clone 3F3 (Cat # RAB04258) (diluted at 1:100).

Specification

Product Description	Rabbit recombinant monoclonal antibody raised against human YAP1.
Antibody Species	Rabbit
Immunogen	Original antibody is raised against a synthetic phosphopeptide corresponding to residues surrounding S127 of human YAP1.
Theoretical MW (kDa)	Calculated MW: 65 kD
Reactivity	Human

Form	Liquid
Purification	Affinity chromatography
Isotype	IgG
Recommend Usage	ELISA Immunohistochemistry (1:50-1:200) Western Blot (1:500-1:5000) The optimal working dilution should be determined by the end user.
Storage Buffer	In PBS, pH7.4 (150mM NaCl, 50% glycerol and 0.02% sodium azide)
Storage Instruction	Store at -20 °C or -80 °C. Aliquot to avoid repeated freezing and thawing.
Note	This product contains sodium azide: a POISONOUS AND HAZARDOUS SUBSTANCE which should be handled by trained staff only.

Applications

- Western Blot

Western blot analysis of Lane 1: HepG2 whole cell lysate (treated with Calyculin A 100 nM/60 mins) and Lane 2: HepG2 whole cell lysate (not treated) with YAP1 (phospho S127) recombinant monoclonal antibody, clone 3F3 (Cat # RAB04258).

- Immunohistochemistry

Immunohistochemical staining of human endometrial cancer with YAP1 (phospho S127) recombinant monoclonal antibody, clone 3F3 (Cat # RAB04258) (diluted at 1:100).

- Enzyme-linked Immunoabsorbent Assay

Gene Info — YAP1

Entrez GeneID	10413
Protein Accession#	P46937
Gene Name	YAP1
Gene Alias	YAP, YAP2, YAP65, YKI
Gene Description	Yes-associated protein 1, 65kDa
Omim ID	606608

Gene Ontology[Hyperlink](#)**Gene Summary**

This gene encodes the human ortholog of chicken YAP protein which binds to the SH3 domain of the Yes proto-oncogene product. This protein contains a WW domain that is found in various structural, regulatory and signaling molecules in yeast, nematode, and mammals, and may be involved in protein-protein interaction. [provided by RefSeq]

Other Designations

yes-associated protein 2

Disease

- [Tobacco Use Disorder](#)