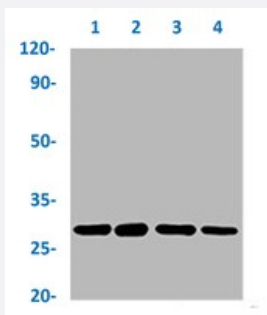


RecomAb™

# HSPB1 (phospho S82) recombinant monoclonal antibody, clone 2E8

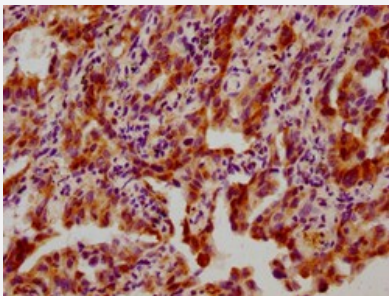
Catalog # RAB04256      Size 100 uL

## Applications



### Western Blot

Western blot analysis of Lane 1: Hela whole cell lysate (not treated), Lane 2: Hela whole cell lysate (treated with EGF 100 ng/mL/20 mins), Lane 3: HepG2 whole cell lysate (treated with Calyculin A 100 nM/60 mins) and Lane 4: HepG2 whole cell lysate (not treated) with HSPB1 (phospho S82) recombinant monoclonal antibody, clone 2E8 (Cat # RAB04256).



### Immunohistochemistry

Immunohistochemical staining of human lung cancer with HSPB1 (phospho S82) recombinant monoclonal antibody, clone 2E8 (Cat # RAB04256) (diluted at 1:100).

## Specification

Product Description	Rabbit recombinant monoclonal antibody raised against human HSPB1.
Antibody Species	Rabbit
Immunogen	Original antibody is raised against a synthetic phosphopeptide corresponding to residues surrounding S82 of human HSPB1.
Theoretical MW (kDa)	Calculated MW: 27 kD
Reactivity	Human

Form	Liquid
Purification	Affinity chromatography
Isotype	IgG
Recommend Usage	ELISA Immunohistochemistry (1:50-1:200) Western Blot (1:500-1:5000) The optimal working dilution should be determined by the end user.
Storage Buffer	In PBS, pH7.4 (150mM NaCl, 50% glycerol and 0.02% sodium azide)
Storage Instruction	Store at -20 °C or -80 °C. Aliquot to avoid repeated freezing and thawing.
Note	This product contains sodium azide: a POISONOUS AND HAZARDOUS SUBSTANCE which should be handled by trained staff only.

## Applications

- Western Blot

Western blot analysis of Lane 1: Hela whole cell lysate (not treated), Lane 2: Hela whole cell lysate (treated with EGF 100 ng/mL/20 mins), Lane 3: HepG2 whole cell lysate (treated with Calyculin A 100 nM/60 mins) and Lane 4: HepG2 whole cell lysate (not treated) with HSPB1 (phospho S82) recombinant monoclonal antibody, clone 2E8 (Cat # RAB04256).

- Immunohistochemistry

Immunohistochemical staining of human lung cancer with HSPB1 (phospho S82) recombinant monoclonal antibody, clone 2E8 (Cat # RAB04256) (diluted at 1:100).

- Enzyme-linked Immunoabsorbent Assay

## Gene Info — HSPB1

Entrez GeneID	<a href="#">3315</a>
Protein Accession#	<a href="#">P04792</a>
Gene Name	HSPB1
Gene Alias	CMT2F, DKFZp586P1322, HMN2B, HS.76067, HSP27, HSP28, Hsp25, SRP27
Gene Description	heat shock 27kDa protein 1
Omim ID	<a href="#">602195</a> <a href="#">606595</a> <a href="#">608634</a>

## Gene Ontology

[Hyperlink](#)

## Gene Summary

The protein encoded by this gene is induced by environmental stress and developmental changes. The encoded protein is involved in stress resistance and actin organization and translocates from the cytoplasm to the nucleus upon stress induction. Defects in this gene are a cause of Charcot-Marie-Tooth disease type 2F (CMT2F) and distal hereditary motor neuropathy (dHMN). [provided by RefSeq]

## Other Designations

OTTHUMP00000024846|estrogen-regulated 24 kDa protein|heat shock 27kD protein 1|heat shock protein beta-1|stress-responsive protein 27

## Pathway

- [MAPK signaling pathway](#)
- [VEGF signaling pathway](#)

## Disease

- [Adenocarcinoma](#)
- [Carcinoma](#)
- [Charcot-Marie-Tooth Disease](#)
- [Diabetic Nephropathies](#)
- [Genetic Predisposition to Disease](#)
- [Lung Neoplasms](#)
- [Small Cell Lung Carcinoma](#)