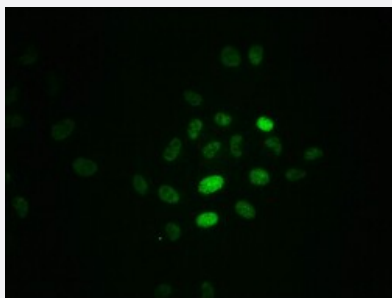


RecomAb™

RPA2 (phospho T21) recombinant monoclonal antibody, clone 3B2

Catalog # RAB04253 Size 100 uL

Applications



Immunofluorescence

Immunofluorescent staining of Hela cells with RPA2 (phospho T21) recombinant monoclonal antibody, clone 3B2 (Cat # RAB04253) (diluted at 1:100). The secondary antibody was Alexa Fluor 488-conjugated goat anti-rabbit IgG (green). Counter-stain DAPI was used (blue).

Specification

Product Description	Rabbit recombinant monoclonal antibody raised against human RPA2.
Antibody Species	Rabbit
Immunogen	Original antibody is raised against a synthetic phosphopeptide corresponding to residues surrounding T21 of human RPA2.
Reactivity	Human
Form	Liquid
Purification	Affinity chromatography
Isotype	IgG
Recommend Usage	ELISA Immunofluorescence (1:20-1:200) The optimal working dilution should be determined by the end user.
Storage Buffer	In PBS, pH7.4 (150mM NaCl, 50% glycerol and 0.02% sodium azide)

Storage Instruction

Store at -20 °C or -80 °C.
Aliquot to avoid repeated freezing and thawing.

Note

This product contains sodium azide: a POISONOUS AND HAZARDOUS SUBSTANCE which should be handled by trained staff only.

Applications

- Immunofluorescence

Immunofluorescent staining of Hela cells with RPA2 (phospho T21) recombinant monoclonal antibody, clone 3B2 (Cat # RAB04253) (diluted at 1:100). The secondary antibody was Alexa Fluor 488-conjugated goat anti-rabbit IgG (green). Counter-stain DAPI was used (blue).

- Enzyme-linked Immunoabsorbent Assay

Gene Info — RPA2

Entrez GeneID[6118](#)**Protein Accession#**[P15927](#)**Gene Name**

RPA2

Gene Alias

REPA2, RPA32

Gene Description

replication protein A2, 32kDa

Omim ID[179836](#)**Gene Ontology**[Hyperlink](#)**Gene Summary**

O

Other Designations

OTTHUMP00000004008|replication protein A2 (32kD)

Pathway

- [DNA replication](#)
- [Homologous recombination](#)
- [Mismatch repair](#)

- [Nucleotide excision repair](#)

Disease

- [Genetic Predisposition to Disease](#)
- [Multiple Sclerosis](#)
- [Urinary Bladder Neoplasms](#)