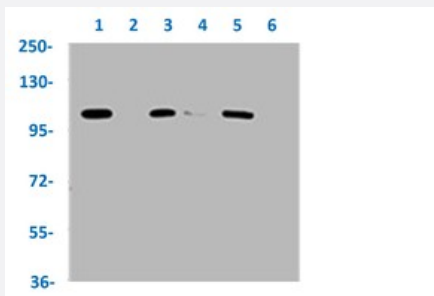


RecomAb™

# ERN1 (phospho S724) recombinant monoclonal antibody, clone 1F12

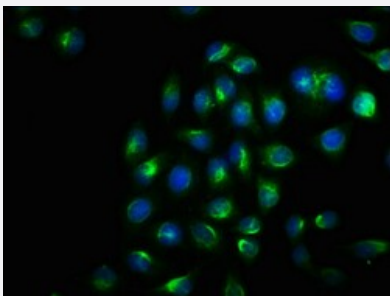
Catalog # RAB04244      Size 100 uL

## Applications



### Western Blot

Western blot analysis of Lane 1: 293 whole cell lysate (treated with Calyculin A 100 nM/60 mins), Lane 2: 293 whole cell lysate (not treated), Lane 3: A549 whole cell lysate (treated with Calyculin A 100 nM/30 mins), Lane 4: A549 whole cell lysate (not treated), Lane 5: Hela whole cell lysate (treated with EGF 100 ng/mL/20 mins), Lane 6: Hela whole cell lysate (not treated) with ERN1 (phospho S724) recombinant monoclonal antibody, clone 1F12 (Cat # RAB04244).



### Immunofluorescence

Immunofluorescent staining of Hela cells with ERN1 (phospho S724) recombinant monoclonal antibody, clone 1F12 (Cat # RAB04244) (diluted at 1:100). The secondary antibody was Alexa Fluor 488-conjugated goat anti-rabbit IgG (green). Counter-stain DAPI was used (blue).

## Specification

Product Description	Rabbit recombinant monoclonal antibody raised against human ERN1.
Antibody Species	Rabbit
Immunogen	Original antibody is raised against a synthetic phosphopeptide corresponding to residues surrounding S724 of human ERN1.
Theoretical MW (kDa)	Calculated MW: 110 k

Reactivity	Human
Form	Liquid
Purification	Affinity chromatography
Isotype	IgG
Recommend Usage	ELISA Immunofluorescence (1:20-1:200) Western Blot (1:500-1:5000) The optimal working dilution should be determined by the end user.
Storage Buffer	In PBS, pH7.4 (150mM NaCl, 50% glycerol and 0.02% sodium azide)
Storage Instruction	Store at -20 °C or -80 °C. Aliquot to avoid repeated freezing and thawing.
Note	This product contains sodium azide: a POISONOUS AND HAZARDOUS SUBSTANCE which should be handled by trained staff only.

## Applications

- Western Blot

Western blot analysis of Lane 1: 293 whole cell lysate (treated with Calyculin A 100 nM/60 mins), Lane 2: 293 whole cell lysate (not treated), Lane 3: A549 whole cell lysate (treated with Calyculin A 100 nM/30 mins), Lane 4: A549 whole cell lysate (not treated), Lane 5: Hela whole cell lysate (treated with EGF 100 ng/mL/20 mins), Lane 6: Hela whole cell lysate (not treated) with ERN1 (phospho S724) recombinant monoclonal antibody, clone 1F12 (Cat # RAB04244).

- Immunofluorescence

Immunofluorescent staining of Hela cells with ERN1 (phospho S724) recombinant monoclonal antibody, clone 1F12 (Cat # RAB04244) (diluted at 1:100). The secondary antibody was Alexa Fluor 488-conjugated goat anti-rabbit IgG (green). Counter-stain DAPI was used (blue).

- Enzyme-linked Immunoabsorbent Assay

## Gene Info — ERN1

Entrez GeneID	<a href="#">2081</a>
Protein Accession#	<a href="#">Q75460</a>
Gene Name	ERN1
Gene Alias	FLJ30999, IRE1, IRE1P, MGC163277, MGC163279

Gene Description	endoplasmic reticulum to nucleus signaling 1
Omim ID	<a href="#">604033</a>
Gene Ontology	<a href="#">Hyperlink</a>
Gene Summary	The protein encoded by this gene is the ER to nucleus signalling 1 protein, a human homologue of the yeast Ire1 gene product. This protein possesses intrinsic kinase activity and an endoribonuclease activity and it is important in altering gene expression as a response to endoplasmic reticulum-based stress signals. [provided by RefSeq]
Other Designations	ER to nucleus signalling 1 endoplasmic reticulum to nucleus signalling 1 inositol-requiring 1 protein kinase/endoribonuclease

## Disease

- [Cardiovascular Diseases](#)
- [Diabetes Mellitus](#)
- [Edema](#)
- [Head and Neck Neoplasms](#)
- [Kidney Failure](#)
- [Neoplasm Recurrence](#)
- [Neoplasms](#)
- [Tobacco Use Disorder](#)