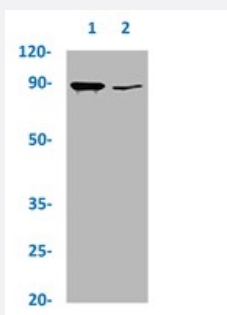


RecomAb™

RPS6KA1 (phospho T359/S363) recombinant monoclonal antibody, clone 1B6

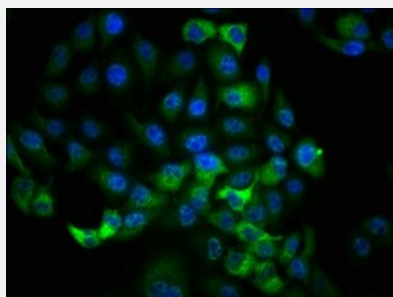
Catalog # RAB04220 Size 100 uL

Applications



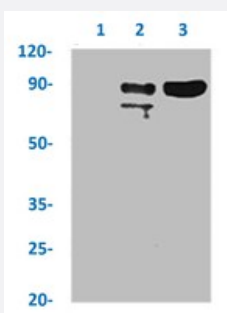
Western Blot

Western blot analysis of HepG2 whole cell lysate with RPS6KA1 (phospho T359/S363) recombinant monoclonal antibody, clone 1B6 (Cat # RAB04220). Lane 1: Treated with EGF 100 ng/ml 20mins and Lane 2: Not treated with EGF.



Immunofluorescence

Immunofluorescent staining of HeLa cells with RPS6KA1 (phospho T359/S363) recombinant monoclonal antibody, clone 1B6 (Cat # RAB04220) (diluted at 1:100). The secondary antibody was Alexa Fluor 488-conjugated goat anti-rabbit IgG (green). Counter-stain DAPI was used (blue).



Immunoprecipitation

Immunoprecipitation analysis of HeLa whole cell lysate with RPS6KA1 (phospho T359/S363) recombinant monoclonal antibody, clone 1B6 (Cat # RAB04220). Lane 1: rabbit control IgG, Lane 2: RAB04220 precipitates and Lane 3 : Input (HeLa whole cell lysates).

Specification

Product Description	Rabbit recombinant monoclonal antibody raised against human RPS6KA1.
Antibody Species	Rabbit
Immunogen	Original antibody is raised against a synthetic phosphopeptide corresponding to residues surrounding T359/S363 of human RPS6KA1.
Theoretical MW (kDa)	Calculated MW: 90 kD
Reactivity	Human
Form	Liquid
Purification	Affinity chromatography
Isotype	IgG
Recommend Usage	ELISA Immunofluorescence (1:20-1:200) Immunoprecipitation (1:200-1:1000) Western Blot (1:500-1:5000) The optimal working dilution should be determined by the end user.
Storage Buffer	In PBS, pH7.4 (150mM NaCl, 50% glycerol and 0.02% sodium azide)
Storage Instruction	store at -20 °C or -80 °C. Aliquot to avoid repeated freezing and thawing.
Note	This product contains sodium azide: a POISONOUS AND HAZARDOUS SUBSTANCE which should be handled by trained staff only.

Applications

- Western Blot

Western blot analysis of HepG2 whole cell lysate with RPS6KA1 (phospho T359/S363) recombinant monoclonal antibody, clone 1B6 (Cat # RAB04220).

Lane 1: Treated with EGF 100 ng/ml 20mins and Lane 2: Not treated with EGF.

- Immunofluorescence

Immunofluorescent staining of HeLa cells with RPS6KA1 (phospho T359/S363) recombinant monoclonal antibody, clone 1B6 (Cat # RAB04220) (diluted at 1:100). The secondary antibody was Alexa Fluor 488-conjugated goat anti-rabbit IgG (green). Counter-stain DAPI was used (blue).

- Immunoprecipitation

Immunoprecipitation analysis of HeLa whole cell lysate with RPS6KA1 (phospho T359/S363) recombinant monoclonal antibody, clone 1B6 (Cat # RAB04220).

Lane 1: rabbit control IgG, Lane 2: RAB04220 precipitates and Lane 3 : Input (HeLa whole cell lysates).

- Enzyme-linked Immunoabsorbent Assay

Gene Info — RPS6KA1

Entrez GeneID [6195](#)

Protein Accession# [Q15418](#)

Gene Name RPS6KA1

Gene Alias HU-1, MAPKAPK1A, RSK, RSK1

Gene Description ribosomal protein S6 kinase, 90kDa, polypeptide 1

Omim ID [601684](#)

Gene Ontology [Hyperlink](#)

Gene Summary This gene encodes a member of the RSK (ribosomal S6 kinase) family of serine/threonine kinase s. This kinase contains 2 nonidentical kinase catalytic domains and phosphorylates various substrates, including members of the mitogen-activated kinase (MAPK) signalling pathway. The activity of this protein has been implicated in controlling cell growth and differentiation. Alternate transcript ional splice variants, encoding different isoforms, have been characterized. [provided by RefSeq

Other Designations OTTHUMP00000004113|S6K-alpha 1|dJ590P13.1 (ribosomal protein S6 kinase, 90kD, polypeptide 1)|p90-RSK 1|ribosomal protein S6 kinase alpha 1|ribosomal protein S6 kinase, 90kD, 1|ribosomal protein S6 kinase, 90kD, polypeptide 1

Pathway

- [Long-term potentiation](#)
- [MAPK signaling pathway](#)
- [mTOR signaling pathway](#)
- [Neurotrophin signaling pathway](#)

Disease

- [Breast cancer](#)
- [Breast Neoplasms](#)

- [Cardiovascular Diseases](#)
- [Diabetes Mellitus](#)
- [Edema](#)
- [Genetic Predisposition to Disease](#)
- [Kidney Failure](#)