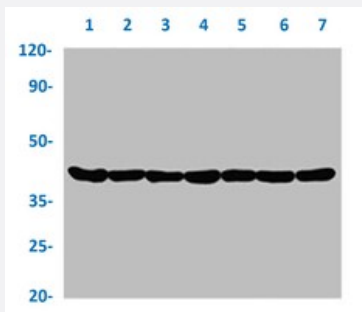


RecomAb™

ACTA1 recombinant monoclonal antibody, clone 25E3

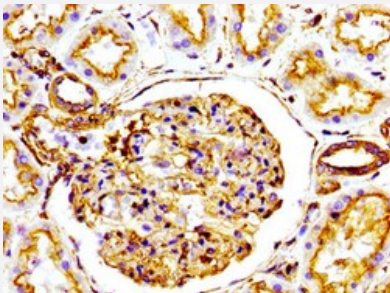
Catalog # RAB04218 Size 100 uL

Applications



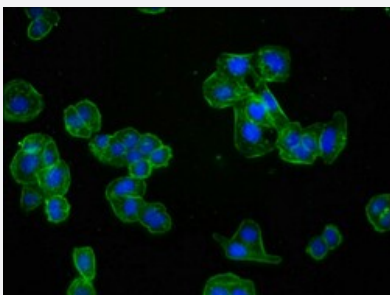
Western Blot

Western blot analysis of Lane 1: Hela whole cell lysate, Lane 2: A549 whole cell lysate, Lane 3: Raw264.7 whole cell lysate, Lane 4: NIH/3T3 whole cell lysate, Lane 5: HepG2 whole cell lysate, Lane 6: rat brain tissue and Lane 7: rat heart tissue with ACTA1 recombinant monoclonal antibody, clone 25E3 (Cat # RAB04218).



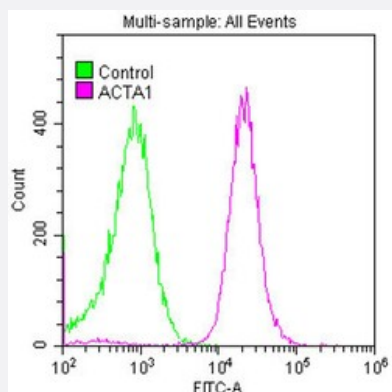
Immunohistochemistry

Immunohistochemical staining of human kidney tissue with ACTA1 recombinant monoclonal antibody, clone 25E3 (Cat # RAB04218) (diluted at 1:100).



Immunofluorescence

Immunofluorescent staining of HepG2 cells with ACTA1 recombinant monoclonal antibody, clone 25E3 (Cat # RAB04218) (diluted at 1:60). The secondary antibody was Alexa Fluor 488-conjugated goat anti-rabbit IgG (green). Counter-stain DAPI was used (blue).



Flow Cytometry

Flow cytometric analysis of HeLa cells with ACTA1 recombinant monoclonal antibody, clone 25E3 (Cat # RAB04218) (diluted at 1:50; purple line) and negative control (green line).

Specification

Product Description	Rabbit recombinant monoclonal antibody raised against human ACTA1.
Antibody Species	Rabbit
Immunogen	Original antibody is raised against a synthetic peptide corresponding to human ACTA1.
Theoretical MW (kDa)	Calculated MW: 42 kD
Reactivity	Human, Mouse, Rat
Form	Liquid
Purification	Affinity chromatography
Isotype	IgG
Recommend Usage	ELISA Flow Cytometry Immunofluorescence (1:30-1:200) Immunohistochemistry (1:50-1:500) Western Blot (1:500-1:5000) The optimal working dilution should be determined by the end user.
Storage Buffer	In PBS, pH7.4 (150mM NaCl, 50% glycerol and 0.02% sodium azide)
Storage Instruction	store at -20 °C or -80 °C. Aliquot to avoid repeated freezing and thawing.
Note	This product contains sodium azide: a POISONOUS AND HAZARDOUS SUBSTANCE which should be handled by trained staff only.

Applications

- Western Blot

Western blot analysis of Lane 1: Hela whole cell lysate, Lane 2: A549 whole cell lysate, Lane 3: Raw264.7 whole cell lysate, Lane 4: NIH/3T3 whole cell lysate, Lane 5: HepG2 whole cell lysate, Lane 6: rat brain tissue and Lane 7: rat heart tissue with ACTA1 recombinant monoclonal antibody, clone 25E3 (Cat # RAB04218).

- Immunohistochemistry

Immunohistochemical staining of human kidney tissue with ACTA1 recombinant monoclonal antibody, clone 25E3 (Cat # RAB04218) (diluted at 1:100).

- Immunofluorescence

Immunofluorescent staining of HepG2 cells with ACTA1 recombinant monoclonal antibody, clone 25E3 (Cat # RAB04218) (diluted at 1:60). The secondary antibody was Alexa Fluor 488-conjugated goat anti-rabbit IgG (green). Counter-stain DAPI was used (blue).

- Enzyme-linked Immunoabsorbent Assay

- Flow Cytometry

Flow cytometric analysis of HeLa cells with ACTA1 recombinant monoclonal antibody, clone 25E3 (Cat # RAB04218) (diluted at 1:50; purple line) and negative control (green line).

Gene Info — ACTA1

Entrez GeneID	58
---------------	--------------------

Protein Accession#	P68133
--------------------	------------------------

Gene Name	ACTA1
-----------	-------

Gene Alias	ACTA, ASMA, CFTD, CFTD1, CFTDM, MPFD, NEM1, NEM2, NEM3
------------	--

Gene Description	actin, alpha 1, skeletal muscle
------------------	---------------------------------

Omim ID	102610 161800 255310
---------	--

Gene Ontology	Hyperlink
---------------	---------------------------

Gene Summary

The product encoded by this gene belongs to the actin family of proteins, which are highly conserved proteins that play a role in cell motility, structure and integrity. Alpha, beta and gamma actin isoforms have been identified, with alpha actins being a major constituent of the contractile apparatus, while beta and gamma actins are involved in the regulation of cell motility. This actin is an alpha actin that is found in skeletal muscle. Mutations in this gene cause nemaline myopathy type 3, congenital myopathy with excess of thin myofilaments, congenital myopathy with cores, and congenital myopathy with fiber-type disproportion, diseases that lead to muscle fiber defects. [provided by RefSeq]

Other Designations

OTTHUMP00000036123|alpha skeletal muscle actin

Disease

- [Acute Disease](#)
- [Alzheimer disease](#)
- [Atherosclerosis](#)
- [Calcinosis](#)
- [Coronary Artery Disease](#)
- [Diabetes Mellitus](#)
- [Myocardial Infarction](#)
- [Parkinson disease](#)