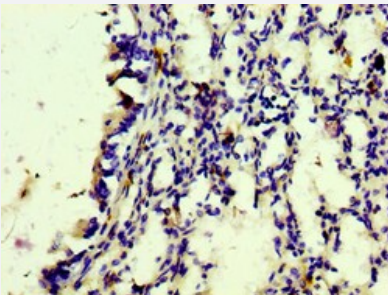


RecomAb™

CD163 recombinant monoclonal antibody, clone 7B2

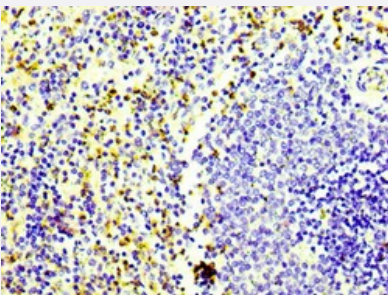
Catalog # RAB04216 Size 100 uL

Applications



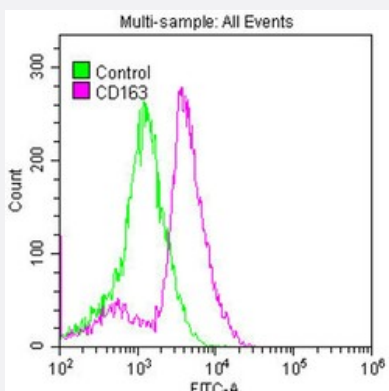
Immunohistochemistry

Immunohistochemical staining of human lung tissue with CD163 recombinant monoclonal antibody, clone 7B2 (Cat # RAB04216) (diluted at 1:100).



Immunohistochemistry

Immunohistochemical staining of human spleen tissue with CD163 recombinant monoclonal antibody, clone 7B2 (Cat # RAB04216) (diluted at 1:100).



Flow Cytometry

Flow cytometric analysis of Raw264.7 cells with CD163 recombinant monoclonal antibody, clone 7B2 (Cat # RAB04216) (diluted at 1:50; purple line) and negative control (green line).

Specification

Product Description	Rabbit recombinant monoclonal antibody raised against human CD163.
Antibody Species	Rabbit
Immunogen	Original antibody is raised against a synthetic peptide corresponding to human CD163.
Reactivity	Human
Form	Liquid
Purification	Affinity chromatography
Isotype	IgG
Recommend Usage	ELISA Flow Cytometry Immunohistochemistry (1:50-1:500) The optimal working dilution should be determined by the end user.
Storage Buffer	In PBS, pH7.4 (150mM NaCl, 50% glycerol and 0.02% sodium azide)
Storage Instruction	store at -20 °C or -80 °C. Aliquot to avoid repeated freezing and thawing.
Note	This product contains sodium azide: a POISONOUS AND HAZARDOUS SUBSTANCE which should be handled by trained staff only.

Applications

- Immunohistochemistry

Immunohistochemical staining of human lung tissue with CD163 recombinant monoclonal antibody, clone 7B2 (Cat # RAB04216) (diluted at 1:100).

- Immunohistochemistry

Immunohistochemical staining of human spleen tissue with CD163 recombinant monoclonal antibody, clone 7B2 (Cat # RAB04216) (diluted at 1:100).

- Enzyme-linked Immunoabsorbent Assay

- Flow Cytometry

Flow cytometric analysis of Raw264.7 cells with CD163 recombinant monoclonal antibody, clone 7B2 (Cat # RAB04216) (diluted at 1:50; purple line) and negative control (green line).

Gene Info — CD163

Entrez GeneID	9332
Protein Accession#	Q86VB7
Gene Name	CD163
Gene Alias	M130, MM130
Gene Description	CD163 molecule
Omim ID	605545
Gene Ontology	Hyperlink
Other Designations	CD163 antigen macrophage-associated antigen

Disease

- [Kidney Failure](#)
- [Tobacco Use Disorder](#)