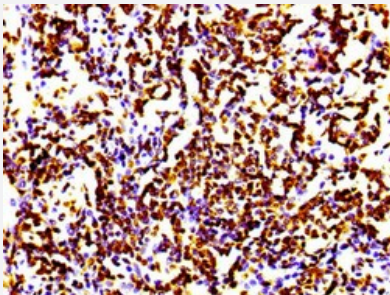


RecomAb™

Histone H4 recombinant monoclonal antibody, clone 21E8

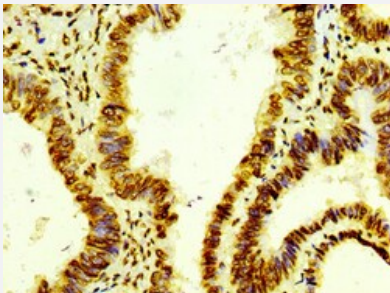
Catalog # RAB04212 Size 100 uL

Applications



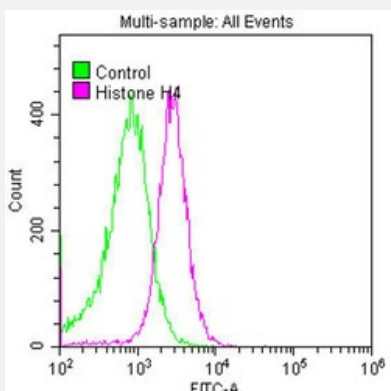
Immunohistochemistry

Immunohistochemical staining of human lung cancer with Histone H4 recombinant monoclonal antibody, clone 21E8 (Cat # RAB04212) (diluted at 1:100).



Immunohistochemistry

Immunohistochemical staining of human colon cancer with Histone H4 recombinant monoclonal antibody, clone 21E8 (Cat # RAB04212) (diluted at 1:100).



Flow Cytometry

Flow cytometric analysis of HeLa cells with Histone H4 recombinant monoclonal antibody, clone 21E8 (Cat # RAB04212) (diluted at 1:50; purple line) and negative control (green line).

Specification

Product Description	Rabbit recombinant monoclonal antibody raised against human Histone H4.
Antibody Species	Rabbit
Immunogen	Original antibody is raised against a synthetic peptide corresponding to human histone H4.
Reactivity	Human
Form	Liquid
Purification	Affinity chromatography
Isotype	IgG
Recommend Usage	ELISA Flow Cytometry Immunohistochemistry (1:50-1:500) The optimal working dilution should be determined by the end user.
Storage Buffer	In PBS, pH7.4 (150mM NaCl, 50% glycerol and 0.02% sodium azide)
Storage Instruction	store at -20 °C or -80 °C. Aliquot to avoid repeated freezing and thawing.
Note	This product contains sodium azide: a POISONOUS AND HAZARDOUS SUBSTANCE which should be handled by trained staff only.

Applications

- Immunohistochemistry

Immunohistochemical staining of human lung cancer with Histone H4 recombinant monoclonal antibody, clone 21E8 (Cat # RAB04212) (diluted at 1:100).

- Immunohistochemistry

Immunohistochemical staining of human colon cancer with Histone H4 recombinant monoclonal antibody, clone 21E8 (Cat # RAB04212) (diluted at 1:100).

- Enzyme-linked Immunoabsorbent Assay

- Flow Cytometry

Flow cytometric analysis of HeLa cells with Histone H4 recombinant monoclonal antibody, clone 21E8 (Cat # RAB04212) (diluted at 1:50; purple line) and negative control (green line).

Gene Info — HIST1H4A

Entrez GeneID	8359
Protein Accession#	P62805
Gene Name	HIST1H4A
Gene Alias	H4/a, H4FA
Gene Description	histone cluster 1, H4a
Omim ID	602822
Gene Ontology	Hyperlink
Gene Summary	<p>Histones are basic nuclear proteins that are responsible for the nucleosome structure of the chromosomal fiber in eukaryotes. Two molecules of each of the four core histones (H2A, H2B, H3, and H4) form an octamer, around which approximately 146 bp of DNA is wrapped in repeating units, called nucleosomes. The linker histone, H1, interacts with linker DNA between nucleosomes and functions in the compaction of chromatin into higher order structures. This gene is intronless and encodes a member of the histone H4 family. Transcripts from this gene lack polyA tails but instead contain a palindromic termination element. This gene is found in the large histone gene cluster on chromosome 6. [provided by RefSeq]</p>
Other Designations	H4 histone family, member A histone 1, H4a

Pathway

- [Systemic lupus erythematosus](#)