

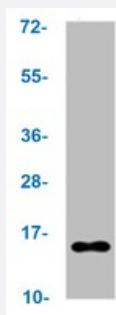
RecomAb™

# Histone H2B type 1-B (acetyl K20) recombinant monoclonal antibody, clone 21F11

Catalog # RAB04207

Size 100 uL

## Applications



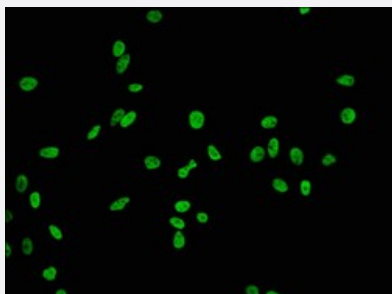
### Western Blot

Western blot analysis of HeLa whole cell lysate with Histone H2B type 1-B (acetyl K20) recombinant monoclonal antibody, clone 21F11 (Cat # RAB04207).



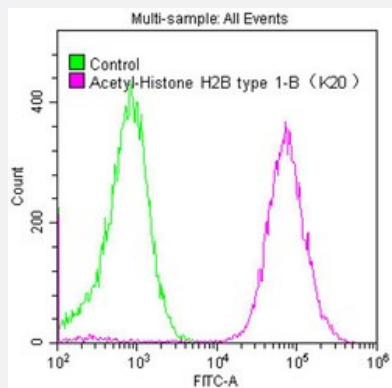
### Immunocytochemistry

Immunocytochemical staining of HeLa cells with Histone H2B type 1-B (acetyl K20) recombinant monoclonal antibody, clone 21F11 (Cat # RAB04207) (diluted at 1:100).



### Immunofluorescence

Immunofluorescent staining of HeLa cells with Histone H2B type 1-B (acetyl K20) recombinant monoclonal antibody, clone 21F11 (Cat # RAB04207) (diluted at 1:84). The secondary antibody was Alexa Fluor 488-conjugated goat anti-rabbit IgG (green). Counter-stain DAPI was used (blue).



## Flow Cytometry

Flow cytometric analysis of HeLa cells with Histone H2B type 1-B (acetyl K20) recombinant monoclonal antibody, clone 21F11 (Cat # RAB04207) (diluted at 1:50; purple line) and negative control (green line).

## Specification

<b>Product Description</b>	Rabbit recombinant monoclonal antibody raised against human Histone H2B type 1-B.
<b>Antibody Species</b>	Rabbit
<b>Immunogen</b>	Original antibody is raised against a synthetic acetyl peptide corresponding to residues surrounding K20 of human histone H2B type 1-B.
<b>Theoretical MW (kDa)</b>	Calculated MW: 15 kD
<b>Reactivity</b>	Human, Mouse
<b>Form</b>	Liquid
<b>Purification</b>	Affinity chromatography
<b>Isotype</b>	IgG
<b>Recommend Usage</b>	ELISA Flow Cytometry Immunocytochemistry (1:50-1:500) Immunofluorescence (1:30-1:200) Western Blot (1:5000-1:10000) The optimal working dilution should be determined by the end user.
<b>Storage Buffer</b>	In PBS, pH7.4 (150mM NaCl, 50% glycerol and 0.02% sodium azide)
<b>Storage Instruction</b>	store at -20 °C or -80 °C. Aliquot to avoid repeated freezing and thawing.
<b>Note</b>	This product contains sodium azide: a POISONOUS AND HAZARDOUS SUBSTANCE which should be handled by trained staff only.

## Applications

- Western Blot

Western blot analysis of HeLa whole cell lysate with Histone H2B type 1-B (acetyl K20) recombinant monoclonal antibody, clone 21F11 (Cat # RAB04207).

- Immunocytochemistry

Immunocytochemical staining of HeLa cells with Histone H2B type 1-B (acetyl K20) recombinant monoclonal antibody, clone 21F11 (Cat # RAB04207) (diluted at 1:100).

- Immunofluorescence

Immunofluorescent staining of HeLa cells with Histone H2B type 1-B (acetyl K20) recombinant monoclonal antibody, clone 21F11 (Cat # RAB04207) (diluted at 1:84). The secondary antibody was Alexa Fluor 488-conjugated goat anti-rabbit IgG (green). Counter-stain DAPI was used (blue).

- Enzyme-linked Immunoabsorbent Assay

- Flow Cytometry

Flow cytometric analysis of HeLa cells with Histone H2B type 1-B (acetyl K20) recombinant monoclonal antibody, clone 21F11 (Cat # RAB04207) (diluted at 1:50; purple line) and negative control (green line).

## Gene Info — HIST1H2BB

Entrez GeneID	<a href="#">3018</a>
---------------	----------------------

Protein Accession#	<a href="#">P33778</a>
--------------------	------------------------

Gene Name	HIST1H2BB
-----------	-----------

Gene Alias	H2B.1, H2B/f, H2BFF, MGC119804
------------	--------------------------------

Gene Description	histone cluster 1, H2bb
------------------	-------------------------

Omim ID	<a href="#">602803</a>
---------	------------------------

Gene Ontology	<a href="#">Hyperlink</a>
---------------	---------------------------

**Gene Summary**

Histones are basic nuclear proteins that are responsible for the nucleosome structure of the chromosomal fiber in eukaryotes. Nucleosomes consist of approximately 146 bp of DNA wrapped around a histone octamer composed of pairs of each of the four core histones (H2A, H2B, H3, and H4). The chromatin fiber is further compacted through the interaction of a linker histone, H1, with the DNA between the nucleosomes to form higher order chromatin structures. This gene is intronless and encodes a member of the histone H2B family. Transcripts from this gene lack polyA tails; instead, they contain a palindromic termination element. This gene is found in the large histone gene cluster on chromosome 6p22-p21.3. [provided by RefSeq]

**Other Designations**

H2B histone family, member F|OTTHUMP00000016138|histone 1, H2bb

**Pathway**

- [Systemic lupus erythematosus](#)