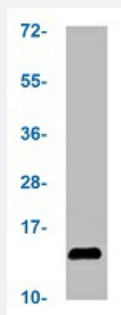


RecomAb™

Histone H2A type 1-B/E (hydroxyl Y39) monoclonal antibody, clone 3B12

Catalog # RAB04188 Size 100 uL

Applications



Western Blot (Tissue lysate)

Western blot analysis of mouse spleen tissue with Histone H2A type 1-B/E (hydroxyl Y39) monoclonal antibody, clone 3B12 (Cat # RAB04188).

Specification

Product Description	Rabbit recombinant monoclonal antibody raised against human Histone H2A type 1-B/E.
Antibody Species	Rabbit
Immunogen	Original antibody is raised against a synthetic hydroxyl peptide corresponding to residues surrounding Y39 of human histone H2A type 1-B/E.
Theoretical MW (kDa)	Calculated MW: 14 kD
Reactivity	Human
Form	Liquid
Purification	Affinity chromatography
Isotype	IgG
Recommend Usage	ELISA Western Blot (1:500-1:2000) The optimal working dilution should be determined by the end user.

Storage Buffer	In PBS, pH7.4 (150mM NaCl, 50% glycerol and 0.02% sodium azide)
Storage Instruction	store at -20 °C or -80 °C. Aliquot to avoid repeated freezing and thawing.
Note	This product contains sodium azide: a POISONOUS AND HAZARDOUS SUBSTANCE which should be handled by trained staff only.

Applications

- Western Blot (Tissue lysate)

Western blot analysis of mouse spleen tissue with Histone H2A type 1-B/E (hydroxyl Y39) monoclonal antibody, clone 3B12 (Cat # RAB04188).

- Enzyme-linked Immunoabsorbent Assay

Gene Info — HIST1H2AB

Entrez GeneID	8335
Protein Accession#	P04908
Gene Name	HIST1H2AB
Gene Alias	H2A/m, H2AFM
Gene Description	histone cluster 1, H2ab
Omim ID	602795
Gene Ontology	Hyperlink

Gene Summary	Histones are basic nuclear proteins that are responsible for the nucleosome structure of the chromosomal fiber in eukaryotes. This structure consists of approximately 146 bp of DNA wrapped around a nucleosome, an octamer composed of pairs of each of the four core histones (H2A, H2B, H3, and H4). The chromatin fiber is further compacted through the interaction of a linker histone, H1, with the DNA between the nucleosomes to form higher order chromatin structures. This gene is intronless and encodes a member of the histone H2A family. Transcripts from this gene lack poly A tails; instead, they contain a palindromic termination element. This gene is found in the large histone gene cluster on chromosome 6p22-p21.3. [provided by RefSeq]
--------------	---

Other Designations	H2A histone family, member M OTTHUMP00000016137 histone 1, H2ab
--------------------	---

Pathway

- [Systemic lupus erythematosus](#)

Disease

- [Tobacco Use Disorder](#)