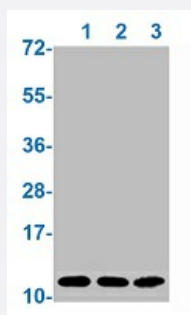


RecomAb™

# Histone H4 (acetyl K16) recombinant monoclonal antibody, clone 2B8

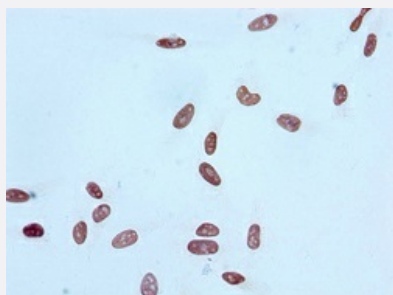
Catalog # RAB04177      Size 100 uL

## Applications



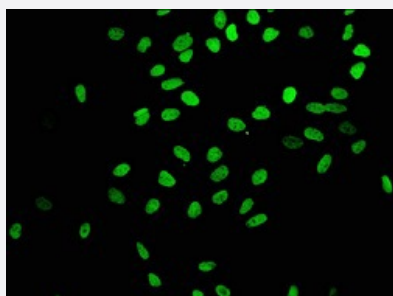
### Western Blot

Western blot analysis of Lane 1: 293 whole cell lysate, Lane 2: HepG2 whole cell lysate and Lane 3: mouse kidney tissue with Histone H4 (acetyl K16) recombinant monoclonal antibody, clone 2B8 (Cat # RAB04177).



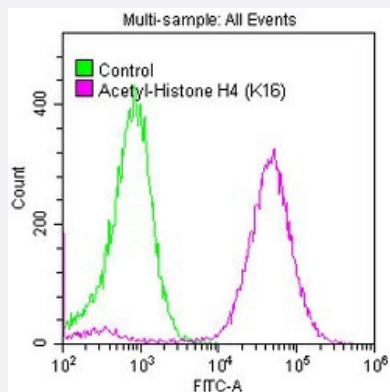
### Immunocytochemistry

Immunocytochemical staining of HeLa cells with Histone H4 (acetyl K16) recombinant monoclonal antibody, clone 2B8 (Cat # RAB04177) (diluted at 1:100).



### Immunofluorescence

Immunofluorescent staining of HeLa cells with Histone H4 (acetyl K16) recombinant monoclonal antibody, clone 2B8 (Cat # RAB04177) (diluted at 1:403). The secondary antibody was Alexa Fluor 488-conjugated goat anti-rabbit IgG (green). Counter-stain DAPI was used (blue).



## Flow Cytometry

Flow cytometric analysis of HeLa cells with Histone H4 (acetyl K16) recombinant monoclonal antibody, clone 2B8 (Cat # RAB04177) (diluted at 1:50; purple line) and negative control (green line).

## Specification

<b>Product Description</b>	Rabbit recombinant monoclonal antibody raised against human histone H4.
<b>Antibody Species</b>	Rabbit
<b>Immunogen</b>	Original antibody is raised against a synthetic acetylated peptide corresponding to residues surrounding K16 of human histone H4.
<b>Theoretical MW (kDa)</b>	Calculated MW: 11 kD
<b>Reactivity</b>	Human, Mouse
<b>Form</b>	Liquid
<b>Purification</b>	Affinity chromatography
<b>Isotype</b>	IgG
<b>Recommend Usage</b>	ELISA Flow Cytometry Immunocytochemistry (1:50-1:500) Immunofluorescence (1:30-1:200) Western Blot (1:500-1:2000) The optimal working dilution should be determined by the end user.
<b>Storage Buffer</b>	In PBS, pH7.4 (150mM NaCl, 50% glycerol and 0.02% sodium azide)
<b>Storage Instruction</b>	store at -20 °C or -80 °C. Aliquot to avoid repeated freezing and thawing.
<b>Note</b>	This product contains sodium azide: a POISONOUS AND HAZARDOUS SUBSTANCE which should be handled by trained staff only.

## Applications

- Western Blot

Western blot analysis of Lane 1: 293 whole cell lysate, Lane 2: HepG2 whole cell lysate and Lane 3: mouse kidney tissue with Histone H4 (acetyl K16) recombinant monoclonal antibody, clone 2B8 (Cat # RAB04177).

- Immunocytochemistry

Immunocytochemical staining of HeLa cells with Histone H4 (acetyl K16) recombinant monoclonal antibody, clone 2B8 (Cat # RAB04177) (diluted at 1:100).

- Immunofluorescence

Immunofluorescent staining of HeLa cells with Histone H4 (acetyl K16) recombinant monoclonal antibody, clone 2B8 (Cat # RAB04177) (diluted at 1:403). The secondary antibody was Alexa Fluor 488-conjugated goat anti-rabbit IgG (green). Counter-stain DAPI was used (blue).

- Enzyme-linked Immunoabsorbent Assay

- Flow Cytometry

Flow cytometric analysis of HeLa cells with Histone H4 (acetyl K16) recombinant monoclonal antibody, clone 2B8 (Cat # RAB04177) (diluted at 1:50; purple line) and negative control (green line).

## Gene Info — HIST1H4A

Entrez GeneID	<a href="#">8359</a>
---------------	----------------------

Protein Accession#	<a href="#">P62805</a>
--------------------	------------------------

Gene Name	HIST1H4A
-----------	----------

Gene Alias	H4/a, H4FA
------------	------------

Gene Description	histone cluster 1, H4a
------------------	------------------------

Omim ID	<a href="#">602822</a>
---------	------------------------

Gene Ontology	<a href="#">Hyperlink</a>
---------------	---------------------------

**Gene Summary**

Histones are basic nuclear proteins that are responsible for the nucleosome structure of the chromosomal fiber in eukaryotes. Two molecules of each of the four core histones (H2A, H2B, H3, and H4) form an octamer, around which approximately 146 bp of DNA is wrapped in repeating units, called nucleosomes. The linker histone, H1, interacts with linker DNA between nucleosomes and functions in the compaction of chromatin into higher order structures. This gene is intronless and encodes a member of the histone H4 family. Transcripts from this gene lack polyA tails but instead contain a palindromic termination element. This gene is found in the large histone gene cluster on chromosome 6. [provided by RefSeq]

**Other Designations**

H4 histone family, member A|histone 1, H4a

**Pathway**

- [Systemic lupus erythematosus](#)