

RecomAb™

MCAM recombinant monoclonal antibody, clone 8A10

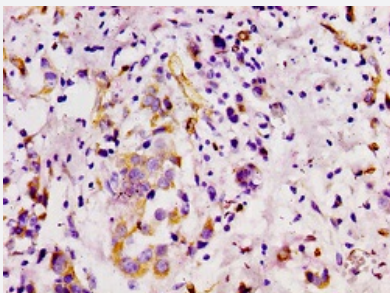
Catalog # RAB04174 Size 100 uL

Applications



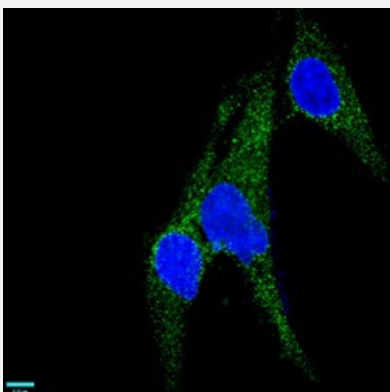
Western Blot (Cell lysate)

Western blot analysis of A375 whole cell lysate with MCAM recombinant monoclonal antibody, clone 8A10 (Cat # RAB04174).



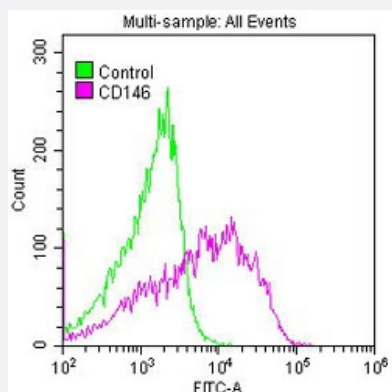
Immunohistochemistry

Immunohistochemical staining of human breast carcinoma with MCAM recombinant monoclonal antibody, clone 8A10 (Cat # RAB04174) (diluted at 1:100).



Immunofluorescence

Immunofluorescent staining of U251 cells with MCAM recombinant monoclonal antibody, clone 8A10 (Cat # RAB04174) (diluted at 1:37). The secondary antibody was Alexa Fluor 488-conjugated goat anti-rabbit IgG (green). Counter-stain DAPI was used (blue).



Flow Cytometry

Flow cytometric analysis of A375 cells with MCAM recombinant monoclonal antibody, clone 8A10 (Cat # RAB04174) (diluted at 1:50; purple line) and negative control (green line).

Specification

Product Description	Rabbit recombinant monoclonal antibody raised against human MCAM.
Antibody Species	Rabbit
Immunogen	Original antibody is raised against a synthetic peptide corresponding to human MCAM .
Theoretical MW (kDa)	Calculated MW: 72 kD
Reactivity	Human
Form	Liquid
Purification	Affinity chromatography
Isotype	IgG
Recommend Usage	ELISA Flow Cytometry Immunofluorescence (1:30-1:200) Immunohistochemistry (1:50-1:500) Western Blot (1:500-1:5000) The optimal working dilution should be determined by the end user.
Storage Buffer	In PBS, pH7.4 (150mM NaCl, 50% glycerol and 0.02% sodium azide)
Storage Instruction	store at -20 °C or -80 °C. Aliquot to avoid repeated freezing and thawing.
Note	This product contains sodium azide: a POISONOUS AND HAZARDOUS SUBSTANCE which should be handled by trained staff only.

Applications

- Western Blot (Cell lysate)

Western blot analysis of A375 whole cell lysate with MCAM recombinant monoclonal antibody, clone 8A10 (Cat # RAB04174).

- Immunohistochemistry

Immunohistochemical staining of human breast carcinoma with MCAM recombinant monoclonal antibody, clone 8A10 (Cat # RAB04174) (diluted at 1:100).

- Immunofluorescence

Immunofluorescent staining of U251 cells with MCAM recombinant monoclonal antibody, clone 8A10 (Cat # RAB04174) (diluted at 1:37). The secondary antibody was Alexa Fluor 488-conjugated goat anti-rabbit IgG (green). Counter-stain DAPI was used (blue).

- Enzyme-linked Immunoabsorbent Assay

- Flow Cytometry

Flow cytometric analysis of A375 cells with MCAM recombinant monoclonal antibody, clone 8A10 (Cat # RAB04174) (diluted at 1:50; purple line) and negative control (green line).

Gene Info — MCAM

Entrez GeneID	4162
---------------	----------------------

Protein Accession#	P43121
--------------------	------------------------

Gene Name	MCAM
-----------	------

Gene Alias	CD146, MUC18
------------	--------------

Gene Description	melanoma cell adhesion molecule
------------------	---------------------------------

Omim ID	155735
---------	------------------------

Gene Ontology	Hyperlink
---------------	---------------------------

Other Designations	Gicerin melanoma adhesion molecule
--------------------	------------------------------------