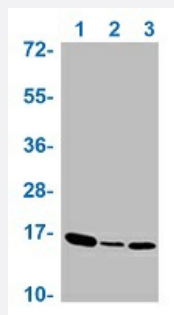


RecomAb™

Histone H3.3 (phospho T3) recombinant monoclonal antibody, clone 28H4

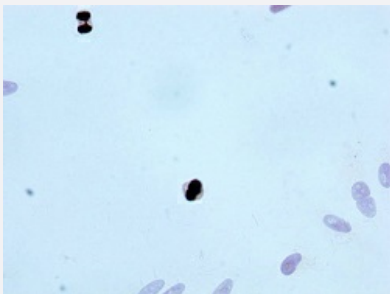
Catalog # RAB04172 Size 100 uL

Applications



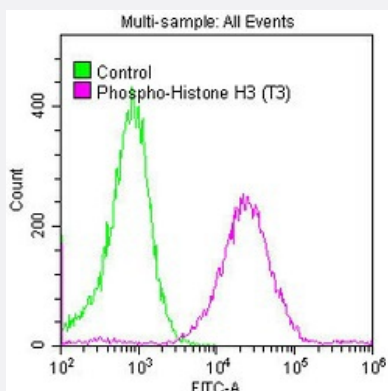
Western Blot (Cell lysate)

Western blot analysis of Lane 1: HeLa whole cell lysate, Lane 2: 293 whole cell lysate and Lane 3: NIH/3T3 whole cell lysate with Histone H3.3 (phospho T3) recombinant monoclonal antibody, clone 28H4 (Cat # RAB04172).



Immunocytochemistry

Immunocytochemical staining of HeLa cells with Histone H3.3 (phospho T3) recombinant monoclonal antibody, clone 28H4 (Cat # RAB04172) (diluted at 1:100).



Flow Cytometry

Flow cytometric analysis of HeLa cells with Histone H3.3 (phospho T3) recombinant monoclonal antibody, clone 28H4 (Cat # RAB04172) (diluted at 1:50; purple line) and negative control (green line).

Specification

Product Description	Rabbit recombinant monoclonal antibody raised against human histone H3.3.
Antibody Species	Rabbit
Immunogen	Original antibody is raised against a synthetic phosphopeptide corresponding to residues surrounding T3 of human histone H3.3.
Theoretical MW (kDa)	Calculated MW: 16 kD
Reactivity	Human, Mouse
Form	Liquid
Purification	Affinity chromatography
Isotype	IgG
Recommend Usage	ELISA Flow Cytometry Immunocytochemistry (1:50-1:500) Western Blot (1:500-1:5000) The optimal working dilution should be determined by the end user.
Storage Buffer	In PBS, pH7.4 (150mM NaCl, 50% glycerol and 0.02% sodium azide)
Storage Instruction	store at -20 °C or -80 °C. Aliquot to avoid repeated freezing and thawing.
Note	This product contains sodium azide: a POISONOUS AND HAZARDOUS SUBSTANCE which should be handled by trained staff only.

Applications

- Western Blot (Cell lysate)

Western blot analysis of Lane 1: HeLa whole cell lysate, Lane 2: 293 whole cell lysate and Lane 3: NIH/3T3 whole cell lysate with Histone H3.3 (phospho T3) recombinant monoclonal antibody, clone 28H4 (Cat # RAB04172).

- Immunocytochemistry

Immunocytochemical staining of HeLa cells with Histone H3.3 (phospho T3) recombinant monoclonal antibody, clone 28H4 (Cat # RAB04172) (diluted at 1:100).

- Enzyme-linked Immunoabsorbent Assay

- Flow Cytometry

Flow cytometric analysis of HeLa cells with Histone H3.3 (phospho T3) recombinant monoclonal antibody, clone 28H4 (Cat # RAB04172) (diluted at 1:50; purple line) and negative control (green line).

Gene Info — H3F3A

Entrez GeneID [3020](#)

Protein Accession# [P84243](#)

Gene Name H3F3A

Gene Alias H3.3A, H3F3, MGC87782, MGC87783

Gene Description H3 histone, family 3A

Omim ID [601128](#)

Gene Ontology [Hyperlink](#)

Gene Summary Histones are basic nuclear proteins that are responsible for the nucleosome structure of the chromosomal fiber in eukaryotes. Two molecules of each of the four core histones (H2A, H2B, H3, and H4) form an octamer, around which approximately 146 bp of DNA is wrapped in repeating units, called nucleosomes. The linker histone, H1, interacts with linker DNA between nucleosomes and functions in the compaction of chromatin into higher order structures. This gene contains introns and its mRNA is polyadenylated, unlike most histone genes. The protein encoded is a replication-independent member of the histone H3 family. [provided by RefSeq]

Other Designations OTTHUMP00000035618|OTTHUMP00000035619|OTTHUMP00000035621

Pathway

- [Systemic lupus erythematosus](#)

Disease

- [Disease Progression](#)
- [Disease Susceptibility](#)
- [HIV Infections](#)