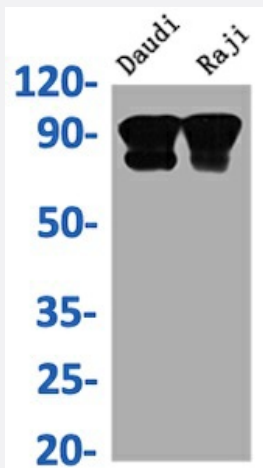


RecomAb™

CD19 recombinant monoclonal antibody, clone 4C7

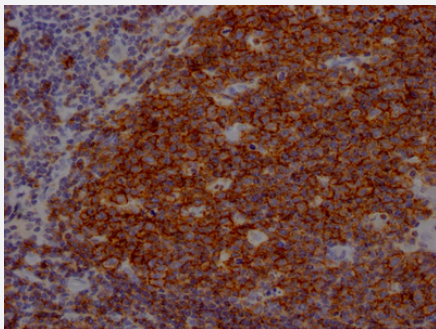
Catalog # RAB04141 Size 100 uL

Applications



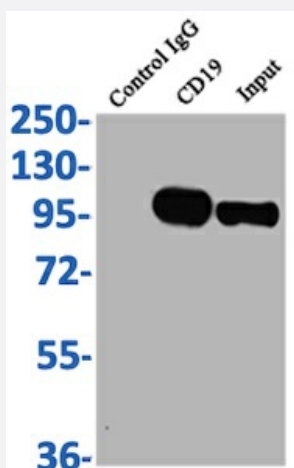
Western Blot

Western Blot analysis of Lane 1: Daudi whole cell lysate; Lane 2: Raji whole cell lysate.



Immunohistochemistry

Immunohistochemistry image of CD19 recombinant monoclonal antibody, clone 4C7 diluted at 1:100 and staining in paraffin-embedded human tonsil tissue performed on a Leica Bond™ system.



Immunoprecipitation

Immunoprecipitating CD19 in Raji whole cell lysate.

Specification

Product Description	Rabbit recombinant monoclonal antibody raised against human CD19.
Antibody Species	Rabbit
Immunogen	Original antibody is raised against recombinant protein corresponding to full length human CD19.
Reactivity	Human
Form	Liquid
Purification	Affinity-chromatography
Isotype	IgG
Recommend Usage	ELISA Immunohistochemistry (1:50-1:200) Immunoprecipitation(1:200-1:1000) Western Blot (1:500-1:5000) The optimal working dilution should be determined by the end user.
Storage Buffer	In PBS, pH7.4 (150 mM NaCl, 50% glycerol and 0.02% sodium azide)
Storage Instruction	Store at -20°C or -80°C. Aliquot to avoid repeated freezing and thawing.
Note	This product contains sodium azide: a POISONOUS AND HAZARDOUS SUBSTANCE which should be handled by trained staff only.

Applications

- Western Blot

Western Blot analysis of Lane 1: Daudi whole cell lysate; Lane 2: Raji whole cell lysate.

- Immunohistochemistry

Immunohistochemistry image of CD19 recombinant monoclonal antibody, clone 4C7 diluted at 1:100 and staining in paraffin-embedded human tonsil tissue performed on a Leica Bond™ system.

- Immunoprecipitation

Immunoprecipitating CD19 in Raji whole cell lysate.

- Enzyme-linked Immunoabsorbent Assay

Gene Info — CD19

Entrez GeneID [930](#)**Protein Accession#** [P15391](#)**Gene Name** CD19**Gene Alias** B4, MGC12802**Gene Description** CD19 molecule**Omim ID** [107265](#)**Gene Ontology** [Hyperlink](#)

Gene Summary Lymphocytes proliferate and differentiate in response to various concentrations of different antigens. The ability of the B cell to respond in a specific, yet sensitive manner to the various antigens is achieved with the use of low-affinity antigen receptors. This gene encodes a cell surface molecule which assembles with the antigen receptor of B lymphocytes in order to decrease the threshold for antigen receptor-dependent stimulation. [provided by RefSeq]

Other Designations B-lymphocyte antigen CD19|CD19 antigen

Pathway

- [B cell receptor signaling pathway](#)
- [Hematopoietic cell lineage](#)
- [Primary immunodeficiency](#)

Disease

- [Arthritis](#)
- [Crohn Disease](#)
- [Genetic Predisposition to Disease](#)
- [Lupus Erythematosus](#)
- [Pemphigus](#)
- [Scleroderma](#)