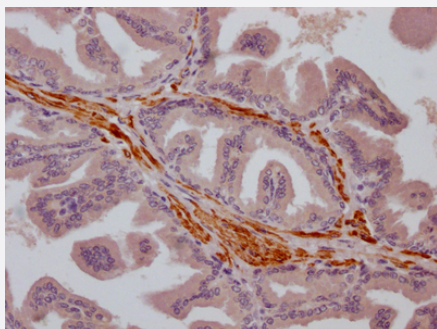


RecomAb™

# TRPM8 recombinant monoclonal antibody, clone 2G7

Catalog # RAB04129      Size 100 uL

## Applications



### Immunohistochemistry

Immunohistochemistry image of TRPM8 recombinant monoclonal antibody, clone 2G7 diluted at 1:100 and staining in paraffin-embedded human prostate cancer performed on a Leica Bond™ system.

## Specification

Product Description	Rabbit recombinant monoclonal antibody raised against human TRPM8.
Antibody Species	Rabbit
Immunogen	Original antibody is raised against recombinant protein corresponding to full length human TRPM8.
Reactivity	Human
Form	Liquid
Purification	Affinity-chromatography
Isotype	IgG
Recommend Usage	ELISA Immunohistochemistry (1:50-1:200) The optimal working dilution should be determined by the end user.
Storage Buffer	In PBS, pH7.4 (150 mM NaCl, 50% glycerol and 0.02% sodium azide)
Storage Instruction	Store at -20°C or -80°C. Aliquot to avoid repeated freezing and thawing.

**Note**

This product contains sodium azide: a POISONOUS AND HAZARDOUS SUBSTANCE which should be handled by trained staff only.

## Applications

- Immunohistochemistry

Immunohistochemistry image of TRPM8 recombinant monoclonal antibody, clone 2G7 diluted at 1:100 and staining in paraffin-embedded human prostate cancer performed on a Leica Bond<sup>TM</sup> system.

- Enzyme-linked Immunoabsorbent Assay

## Gene Info — TRPM8

Entrez GeneID	<a href="#">79054</a>
Protein Accession#	<a href="#">Q7Z2W7</a>
Gene Name	TRPM8
Gene Alias	LTRPC6, MGC2849, TRPP8
Gene Description	transient receptor potential cation channel, subfamily M, member 8
Omim ID	<a href="#">606678</a>
Gene Ontology	<a href="#">Hyperlink</a>
Gene Summary	subfamily M
Other Designations	OTTHUMP00000065206 short form of the TRPM8 cationic channel transient receptor potential subfamily M member 8

## Disease

- [Cardiovascular Diseases](#)
- [Diabetes Mellitus](#)
- [Edema](#)