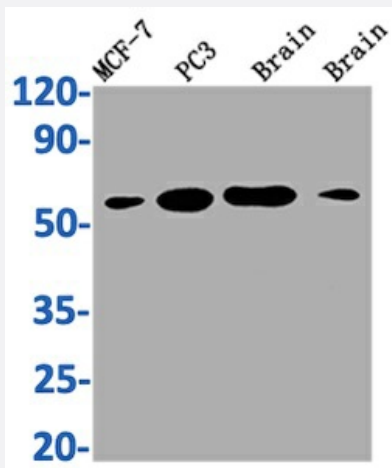


RecomAb™

# LOXL2 recombinant monoclonal antibody, clone 2E5

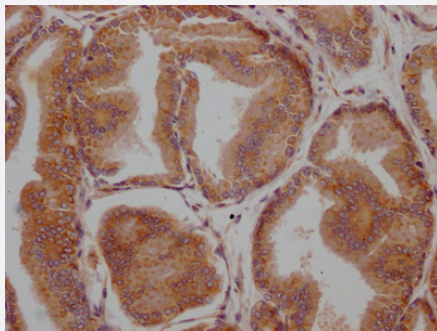
Catalog # RAB04127      Size 100 uL

## Applications



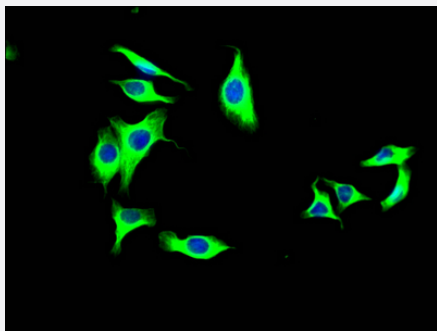
### Western Blot

Western Blot analysis of Lane 1: MCF-7 whole cell lysate; Lane 2: PC3 whole cell lysate; Lane 3: Mouse brain tissue; Lane 4: Rat brain tissue.



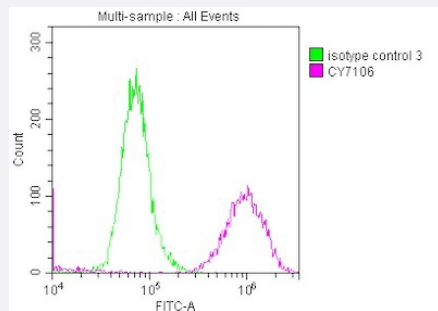
### Immunohistochemistry

Immunohistochemistry image of LOXL2 recombinant monoclonal antibody, clone 2E5 diluted at 1:100 and staining in paraffin-embedded human prostate tissue performed on a Leica Bond™ system.



### Immunofluorescence

Immunofluorescence staining of HepG2 Cells with LOXL2 recombinant monoclonal antibody, clone 2E5 at 1:50, counter-stained with DAPI.



## Flow Cytometry

Overlay histogram showing A549 cells stained with LOXL2 recombinant monoclonal antibody, clone 2E5 (red line) at 1:50.

## Specification

<b>Product Description</b>	Rabbit recombinant monoclonal antibody raised against human, mouse and rat LOXL2.
<b>Antibody Species</b>	Rabbit
<b>Immunogen</b>	Original antibody is raised against recombinant protein corresponding to full length human LOXL2.
<b>Reactivity</b>	Human, Mouse, Rat
<b>Form</b>	Liquid
<b>Purification</b>	Affinity-chromatography
<b>Isotype</b>	IgG
<b>Recommend Usage</b>	ELISA Flow Cytometry (1:20-1:200) Immunohistochemistry (1:50-1:200) Immunofluorescence(1:20-1:200) Western Blot (1:500-1:5000) The optimal working dilution should be determined by the end user.
<b>Storage Buffer</b>	In PBS, pH7.4 (150 mM NaCl, 50% glycerol and 0.02% sodium azide)
<b>Storage Instruction</b>	Store at -20°C or -80°C. Aliquot to avoid repeated freezing and thawing.
<b>Note</b>	This product contains sodium azide: a POISONOUS AND HAZARDOUS SUBSTANCE which should be handled by trained staff only.

## Applications

- Western Blot

Western Blot analysis of Lane 1: MCF-7 whole cell lysate; Lane 2: PC3 whole cell lysate; Lane 3: Mouse brain tissue; Lane 4: Rat brain tissue.

- Immunohistochemistry

Immunohistochemistry image of LOXL2 recombinant monoclonal antibody, clone 2E5 diluted at 1:100 and staining in paraffin-embedded human prostate tissue performed on a Leica Bond™ system.

- Immunofluorescence

Immunofluorescence staining of HepG2 Cells with LOXL2 recombinant monoclonal antibody, clone 2E5 at 1:50, counter-stained with DAPI.

- Enzyme-linked Immunoabsorbent Assay

- Flow Cytometry

Overlay histogram showing A549 cells stained with LOXL2 recombinant monoclonal antibody, clone 2E5 (red line) at 1:50.

## Gene Info — LOXL2

Entrez GeneID [4017](#)

Protein Accession# [Q9Y4K0](#)

Gene Name LOXL2

Gene Alias LOR2, WS9-14

Gene Description lysyl oxidase-like 2

Omim ID [606663](#)

Gene Ontology [Hyperlink](#)

**Gene Summary**

This gene encodes a member of the lysyl oxidase gene family. The prototypic member of the family is essential to the biogenesis of connective tissue, encoding an extracellular copper-dependent amine oxidase that catalyses the first step in the formation of crosslinks in collagens and elastin. A highly conserved amino acid sequence at the C-terminus end appears to be sufficient for amine oxidase activity, suggesting that each family member may retain this function. The N-terminus is poorly conserved and may impart additional roles in developmental regulation, senescence, tumor suppression, cell growth control, and chemotaxis to each member of the family. [provided by RefSeq]

**Other Designations** lysyl oxidase homolog 2|lysyl oxidase related 2

## Disease

- [Genetic Predisposition to Disease](#)
- [Intracranial Aneurysm](#)
- [Long QT syndrome](#)
- [Torsades de Pointes](#)